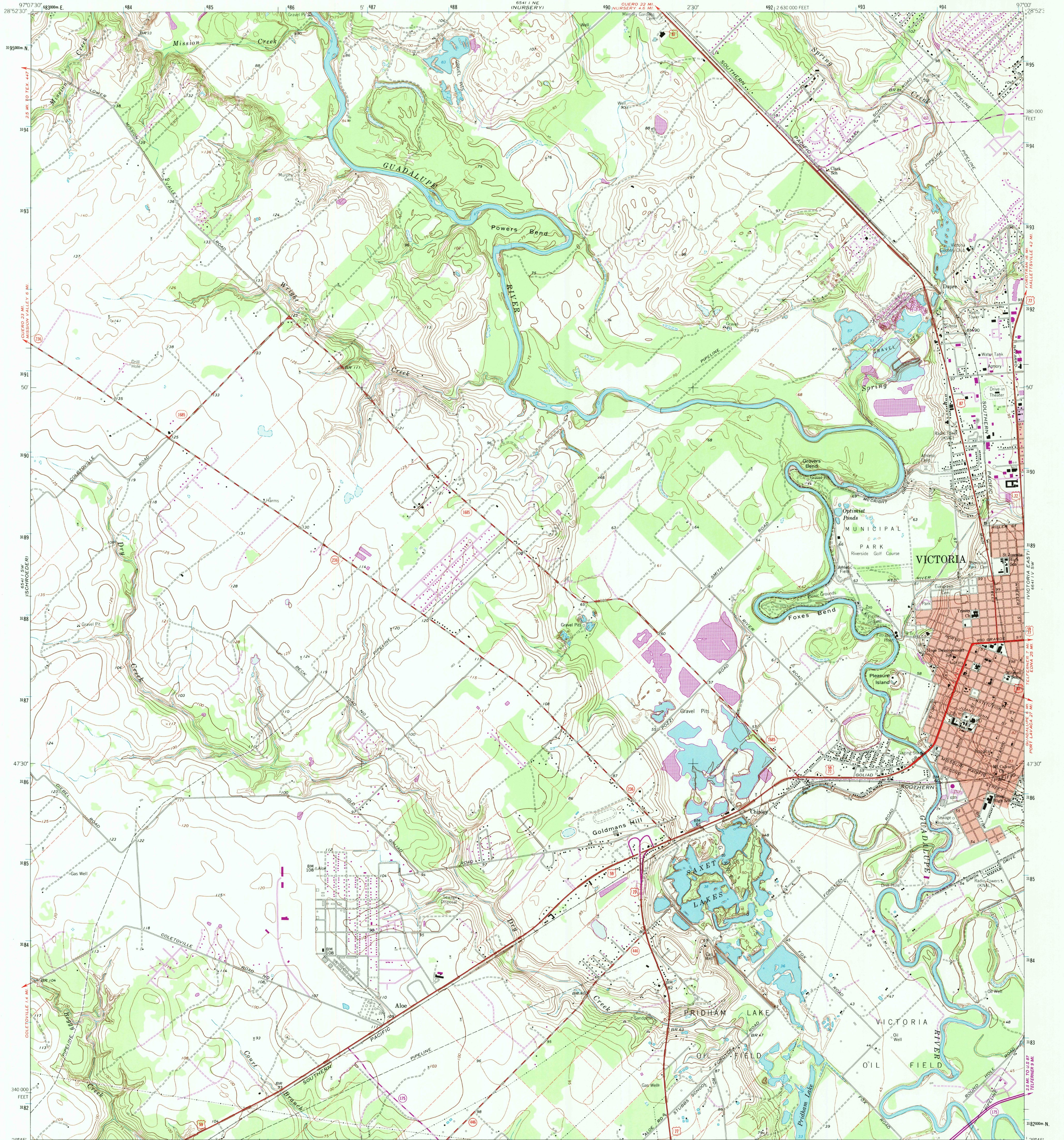


UNITED STATES
DEPARTMENT OF THE INTERIOR
GEOLOGICAL SURVEY

VICTORIA WEST QUADRANGLE
TEXAS-VICTORIA CO.
7.5 MINUTE SERIES (TOPOGRAPHIC)



Mapped, edited, and published by the Geological Survey

Control by USGS and NOS/NOAA

Topography by photogrammetric methods from aerial photographs taken 1962. Field checked 1964.

Polyconic projection. 1927 North American Datum. 10,000-foot grid based on Texas coordinate system, south central zone 1000-meter Universal Transverse Mercator grid ticks, zone 14, shown in blue.

Red tint indicates area in which only landmark buildings are shown.

Fine red dashed lines indicate selected fence lines.

To place on the predicted North American Datum 1983 move the projection lines 23 meters south and 26 meters east as shown by dashed corner ticks.

Purple tint indicates extension of urban areas.

Revisions shown in purple and woodland compiled from aerial photographs taken 1981 and other source data. This information not field checked. Map edited 1987.

UTM GRID AND 1987 MAGNETIC NORTH DECLINATION AT CENTER OF SHEET

0°56' 17" M
61° 11' 14" W

SCALE 1:24,000

CONTOUR INTERVAL 5 FEET

NATIONAL GEODETIC VERTICAL DATUM OF 1929

ROAD CLASSIFICATION

Heavy-duty	Light-duty
Medium-duty	Unimproved dirt
U.S. Route	State Route

TEXAS

QUADRANGLE LOCATION

2897-441

USGS NMD HISTORICAL MAP

JUN 02 1988

REC'D FILE COPY

VICTORIA WEST, TEX.

28097-G1-TF-024

1964

PHOTOREVISED 1987

DMA 6541 I SE-SERIES V882

THIS MAP COMPLIES WITH NATIONAL MAP ACCURACY STANDARDS

FOR SALE BY U.S. GEOLOGICAL SURVEY

DENVER, COLORADO 80225, OR RESTON, VIRGINIA 22092

A FOLDER DESCRIBING TOPOGRAPHIC MAPS AND SYMBOLS IS AVAILABLE ON REQUEST