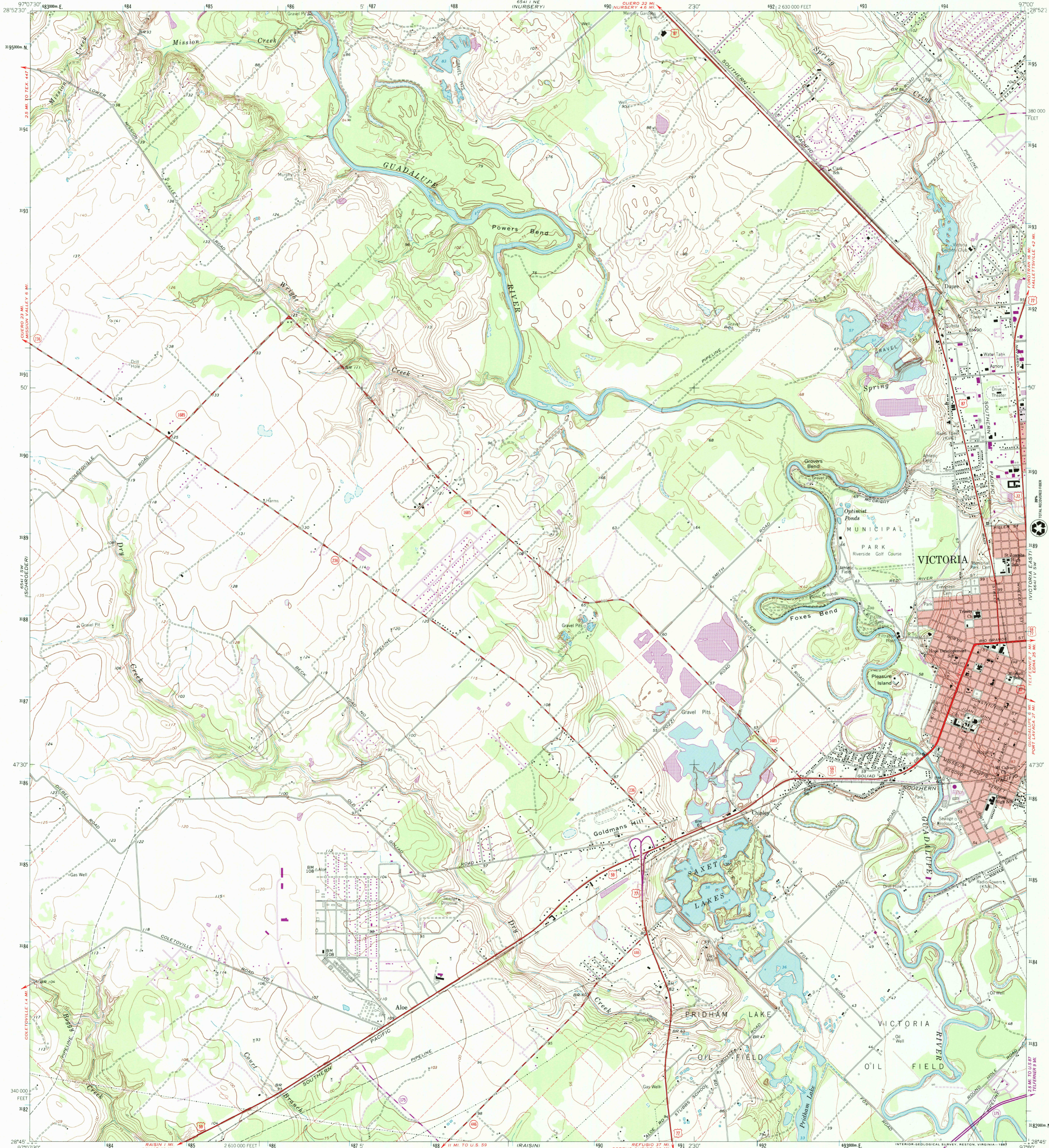




U.S. DEPARTMENT OF THE INTERIOR
U.S. GEOLOGICAL SURVEY

VICTORIA WEST QUADRANGLE
TEXAS-VICTORIA CO.
7.5 MINUTE SERIES (TOPOGRAPHIC)



Mapped, edited, and published by the Geological Survey

Control by USGS and NOS/NOAA

Topography by photogrammetric methods from aerial
photographs taken 1962. Field checked 1964.

Polyconic projection 1927 North American Datum
10,000-foot grid based on Texas coordinate system, south central zone
1000-meter Universal Transverse Mercator grid ticks,
zone 14, shown in blue

Red tint indicates area in which only landmark buildings are shown

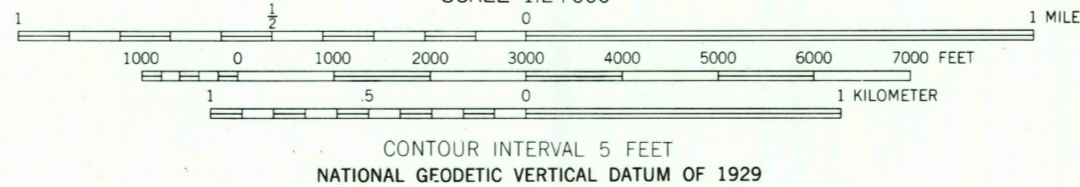
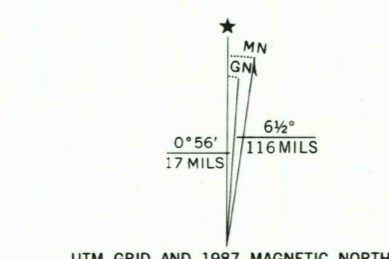
Fine red dashed lines indicate selected fence lines

To place on the predicted North American Datum 1983

move the projection lines 23 meters south and

26 meters east as shown by dashed corner ticks

Purple tint indicates extension of urban areas



THIS MAP COMPLIES WITH NATIONAL MAP ACCURACY STANDARDS
FOR SALE BY U.S. GEOLOGICAL SURVEY, P.O. BOX 25286, DENVER, COLORADO 80225
A FOLDER DESCRIBING TOPOGRAPHIC MAPS AND SYMBOLS IS AVAILABLE ON REQUEST



RECEIVED
OCT 3 1 2001

HISTORICAL MAP ARCHIVES

VICTORIA WEST, TEX.
28097-G1-TF-024

1964
PHOTOREVISED 1987
DMA 6541:1 SE-SERIES V82

