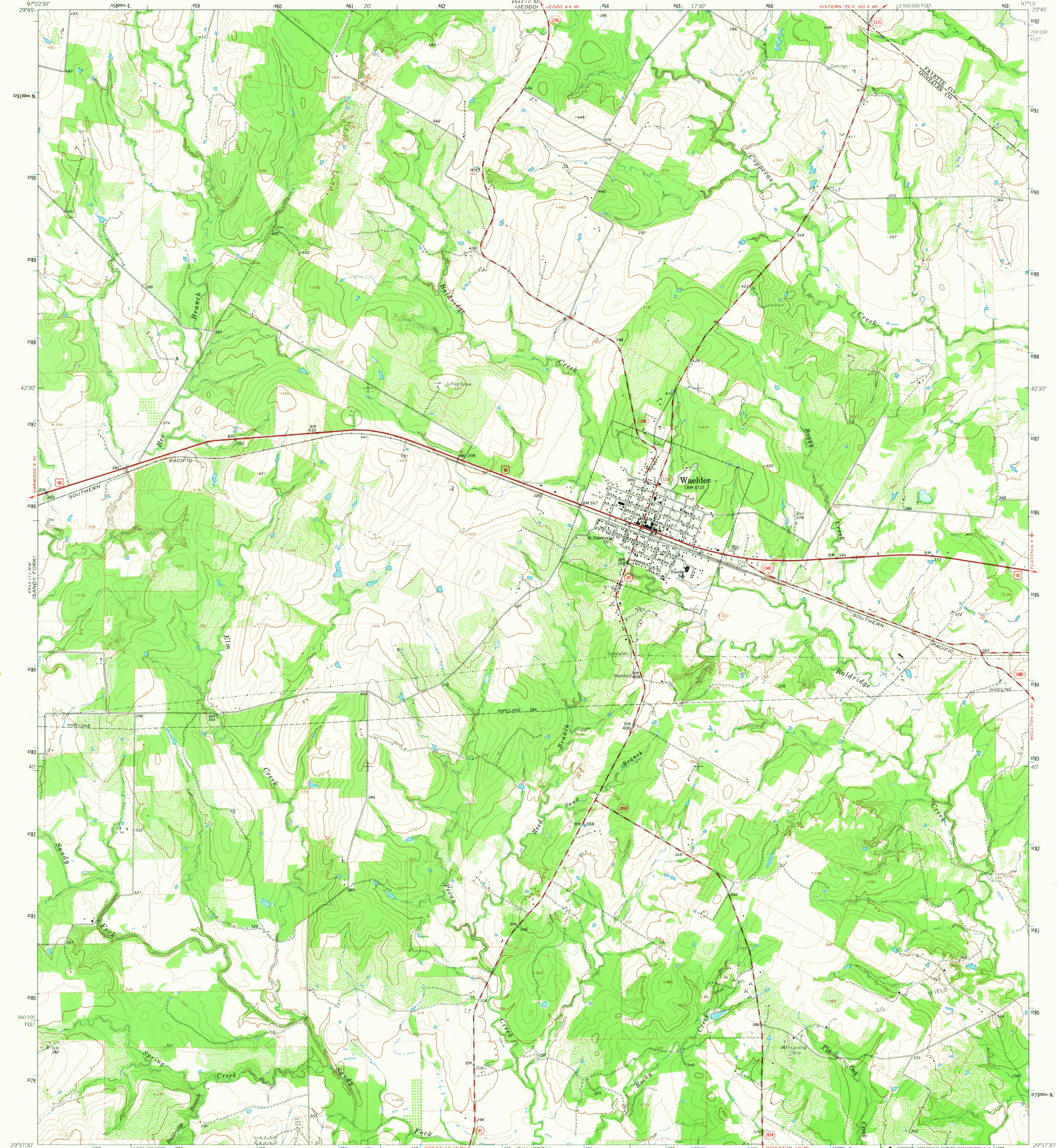


66°43'11" SW  
106°11'11" W

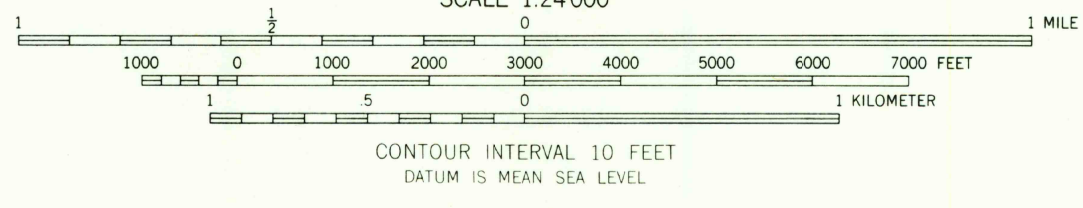
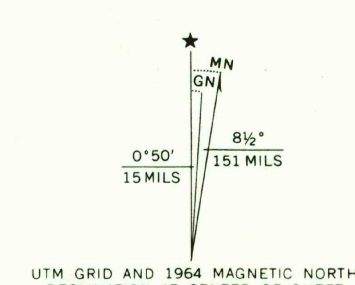
UNITED STATES  
DEPARTMENT OF THE INTERIOR  
GEOLOGICAL SURVEY

WAEIDER QUADRANGLE  
TEXAS  
7.5 MINUTE SERIES (TOPOGRAPHIC)



66°43'11" SW  
106°11'11" W

Mapped, edited, and published by the Geological Survey  
Control by USGS and USC&GS  
Topography by photogrammetric methods from aerial  
photographs taken 1963. Field checked 1964  
Polyconic projection. 1927 North American datum  
10,000-foot grid based on Texas coordinate system, south central zone  
1000-meter Universal Transverse Mercator grid ticks,  
zone 14, shown in blue  
Fine red dashed lines indicate selected fence lines



ROAD CLASSIFICATION	
Heavy-duty	Light-duty
Medium-duty	Unimproved dirt
U.S. Route	State Route

THIS MAP COMPLIES WITH NATIONAL MAP ACCURACY STANDARDS  
FOR SALE BY U.S. GEOLOGICAL SURVEY, DENVER, COLORADO 80225, OR WASHINGTON, D. C. 20242  
A FOLDER DESCRIBING TOPOGRAPHIC MAPS AND SYMBOLS IS AVAILABLE ON REQUEST

U.S.G.S.  
FILE COPY  
TOPOGRAPHIC DIVISION

WAEIDER, TEX.  
N2937.5-W9715.7.5  
1964  
AMS 6543 III NE-SERIES V882

2740  
NOV 7 1966