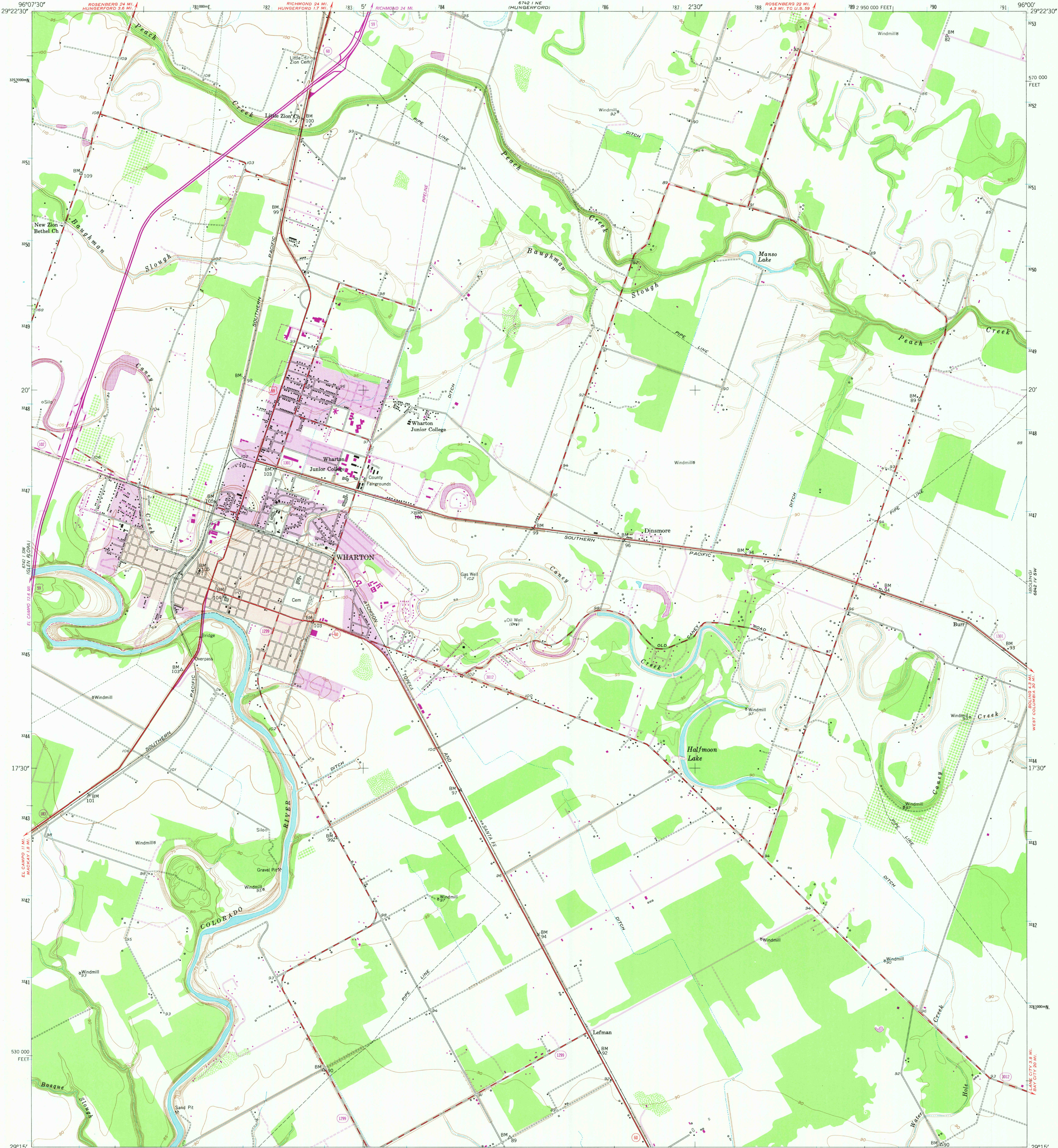


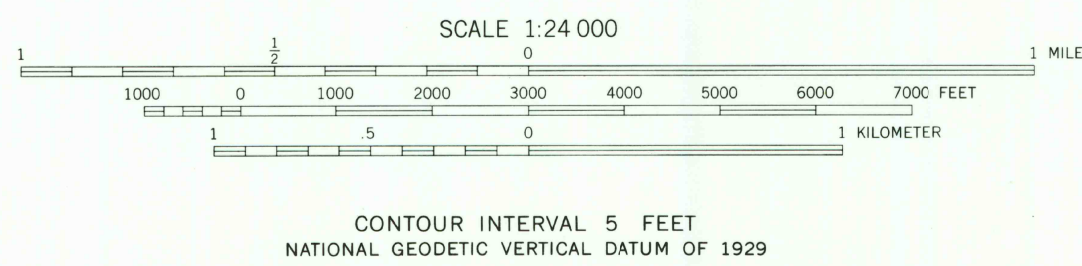
UNITED STATES  
DEPARTMENT OF THE INTERIOR  
GEOLOGICAL SURVEY

WHARTON QUADRANGLE  
TEXAS—WHARTON CO.  
7.5 MINUTE SERIES (TOPOGRAPHIC)

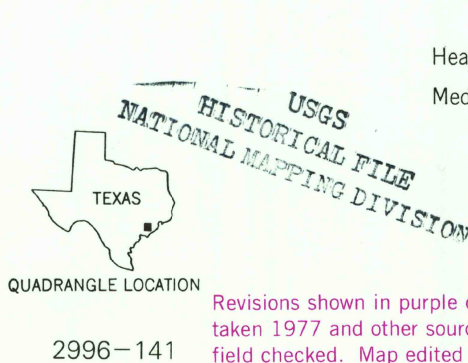


Mapped, edited, and published by the Geological Survey  
Control by USGS, NOS/NOAA/USCE, and Texas GLO—  
State Reclamation Department  
Culture and drainage in part compiled from aerial  
photographs taken 1951. Topography by plane-table surveys  
by Texas GLO—State Reclamation Department 1939,  
and by U.S. Corps of Engineers 1945. Field check 1953  
Polyconic projection. 1927 North American datum  
100,000-foot grid based on Texas coordinate system,  
south central zone  
Red tint indicates area in which only landmark buildings  
are shown  
1000-meter Universal Transverse Mercator grid ticks,  
zone 14, shown in blue

UTM GRID AND 1980 MAGNETIC NORTH  
DECLINATION AT CENTER OF SHEET  
To place on the predicted North American Datum 1983  
move the projection lines 22 meters south and  
23 meters east as shown by dashed corner ticks



THIS MAP COMPLIES WITH NATIONAL MAP ACCURACY STANDARDS  
FOR SALE BY U. S. GEOLOGICAL SURVEY, DENVER, COLORADO 80225, OR RESTON, VIRGINIA 22092  
A FOLDER DESCRIBING TOPOGRAPHIC MAPS AND SYMBOLS IS AVAILABLE ON REQUEST



ROAD CLASSIFICATION  
Heavy-duty ——— 4 LANE 16 LANE Light-duty ———  
Medium-duty ——— 4 LANE 16 LANE Unimproved dirt ———  
U. S. Route State Route

WHARTON, TEX.  
N2915—W9600/7.5  
1953  
PHOTOREVISED 1980  
DMA 6742 1 SE—SERIES V882

MAY 28 1981  
2050