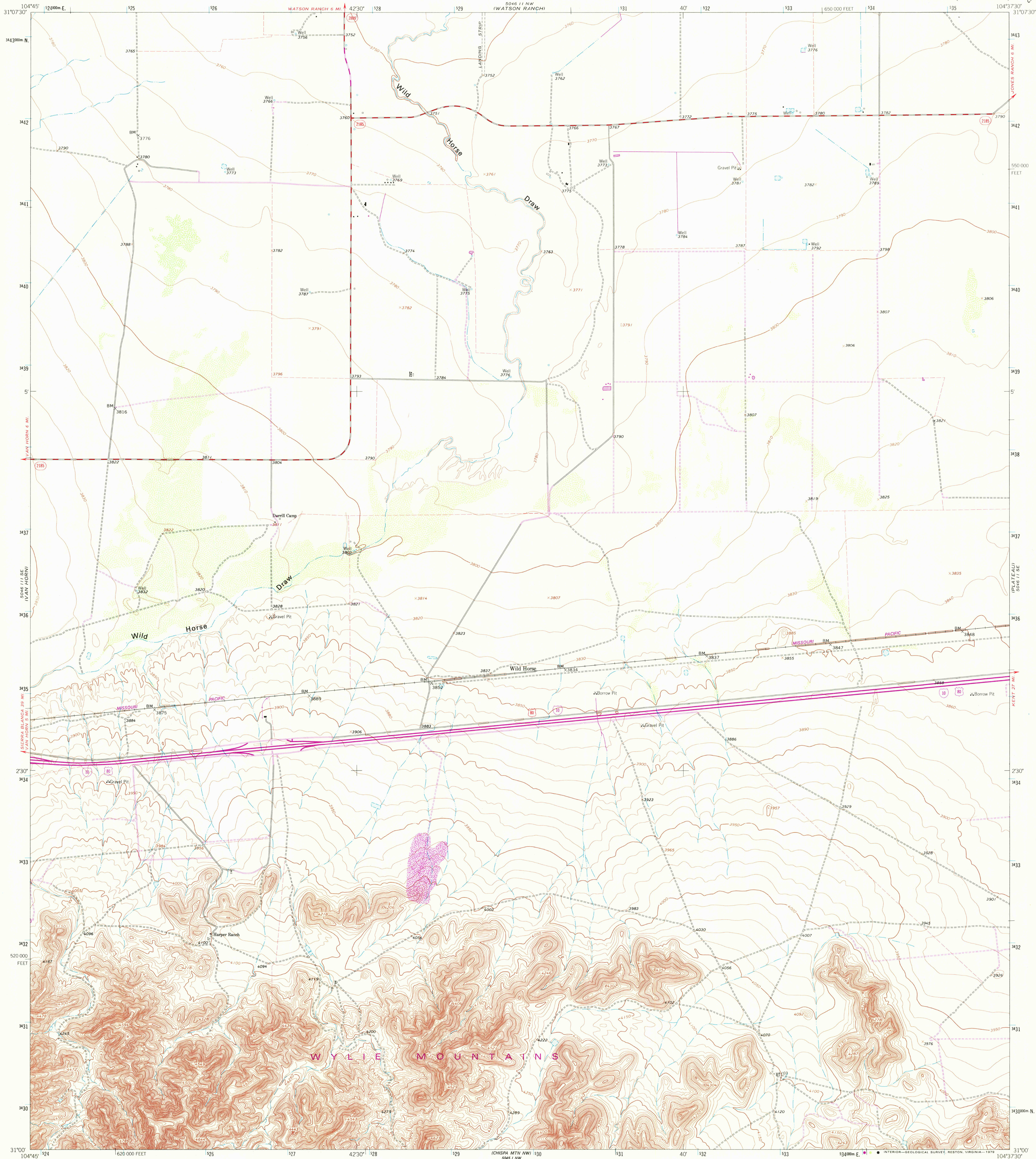


UNITED STATES
DEPARTMENT OF THE INTERIOR
GEOLOGICAL SURVEY



WILD HORSE QUADRANGLE
TEXAS-CULBERSON CO.
7.5 MINUTE SERIES (TOPOGRAPHIC)

506 11 SE
(CANYON)



Mapped, edited, and published by the Geological Survey

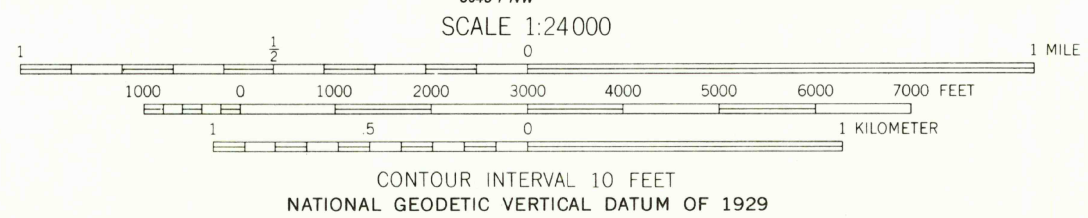
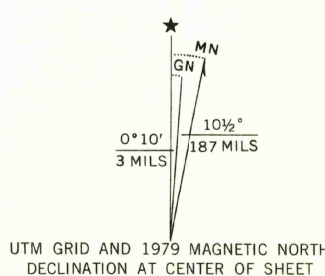
Control by USGS and USC&GS

Topography by photogrammetric methods from aerial
photographs taken 1963. Field checked 1964

Polyconic projection. 1927 North American datum
10,000-foot grid based on Texas coordinate system, central zone
1000-meter Universal Transverse Mercator grid ticks,
zone 13, shown in blue

Fine red dashed lines indicate selected fence lines

Revisions shown in purple compiled from aerial photographs
taken 1976 and other source data. This information not
field checked. Map edited 1979



ROAD CLASSIFICATION

Primary highway, all weather, hard surface
Secondary highway, all weather, hard surface
Light-duty road, all weather, improved surface
Unimproved road, fair or dry weather

Interstate Route U. S. Route State Route



QUADRANGLE LOCATION

USGS
Historical File
Topographic Division

WILD HORSE, TEX.
N3100-W10437.5/7.5

1964
PHOTOREVISED 1979
AMS 5046 11 SW-SERIES V882

MAY 14 1979

THIS MAP COMPLIES WITH NATIONAL MAP ACCURACY STANDARDS
FOR SALE BY U. S. GEOLOGICAL SURVEY, DENVER, COLORADO 80225, OR RESTON, VIRGINIA 22092
A FOLDER DESCRIBING TOPOGRAPHIC MAPS AND SYMBOLS IS AVAILABLE ON REQUEST

3104-212

2660