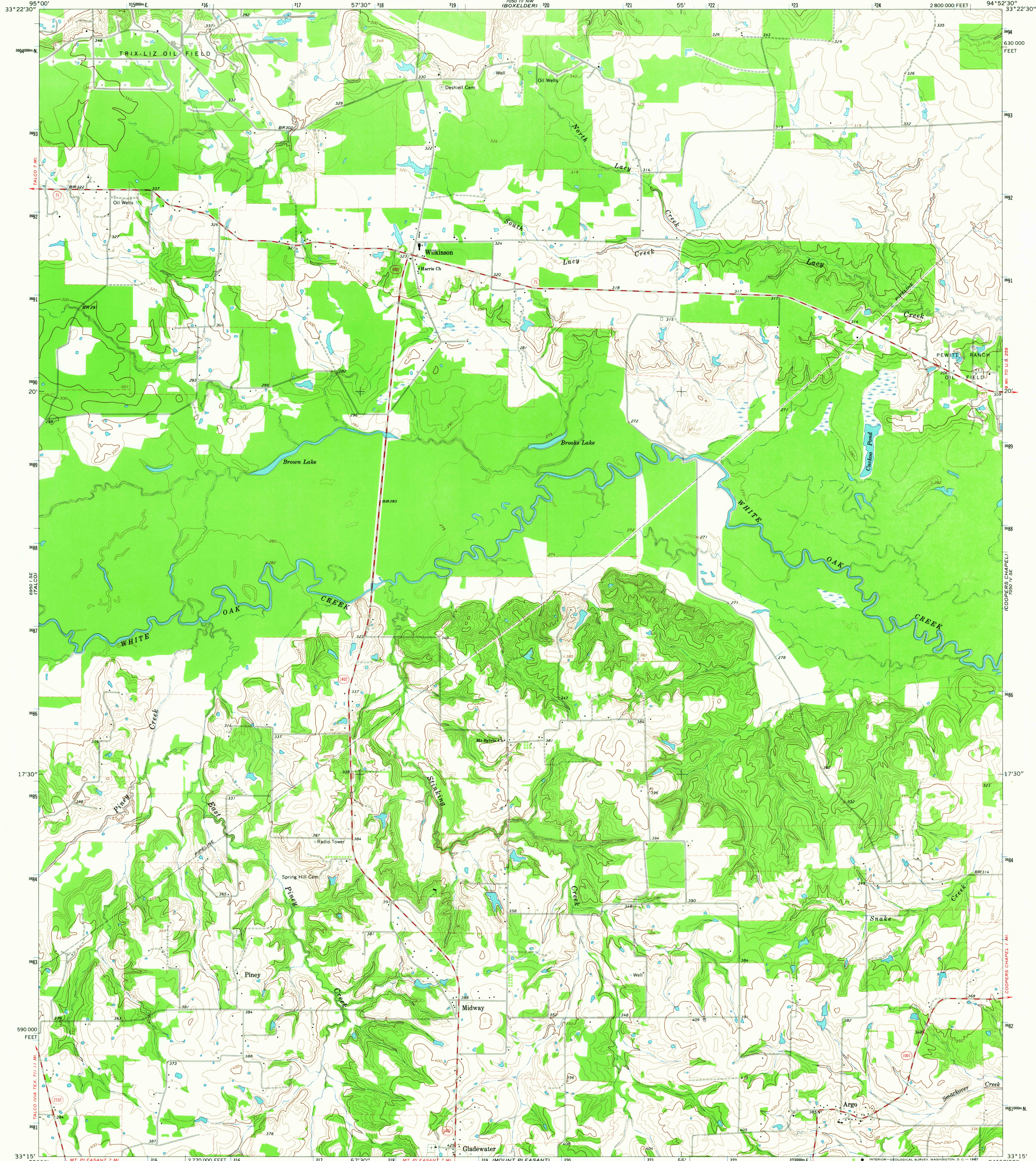


6950' 10" N
6950' 10" N
6950' 10" N

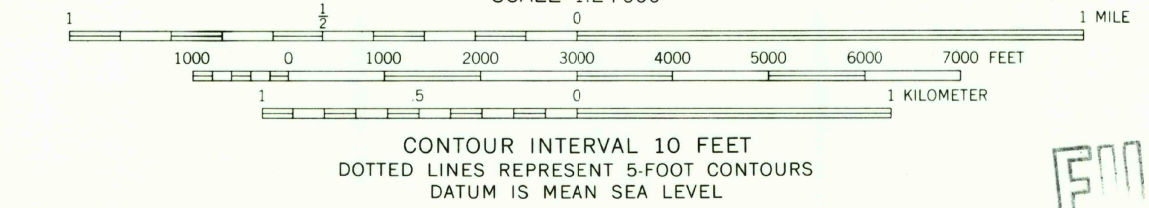
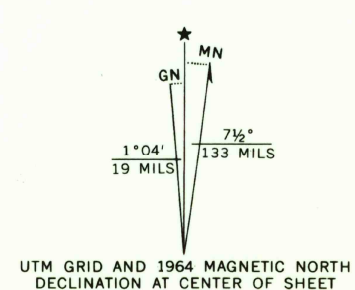
UNITED STATES
DEPARTMENT OF THE INTERIOR
GEOLOGICAL SURVEY

WILKINSON QUADRANGLE
TEXAS—TITUS CO.
7.5 MINUTE SERIES (TOPOGRAPHIC)

7050' 10" N
7050' 10" N
7050' 10" N



Maped, edited, and published by the Geological Survey
Control by USGS and USC&GS
Topography by photogrammetric methods from aerial
photographs taken 1964. Field checked 1964
Polyconic projection. 1927 North American datum
10,000-foot grid based on Texas coordinate system,
north central zone.
1000-meter Universal Transverse Mercator grid ticks,
zone 15, shown in blue
Fine red dashed lines indicate selected fence lines



U.S.G.S.
FILE COPY
TOPOGRAPHIC DIVISION
QUADRANGLE LOCATION

ROAD CLASSIFICATION
Medium-duty ——— Light-duty ———
Unimproved dirt ———
○ State Route

WILKINSON, TEX.
N3315—W9452.5/7.5

1964

AMS 7050 IV SW—SERIES V882

THIS MAP COMPLIES WITH NATIONAL MAP ACCURACY STANDARDS
FOR SALE BY U. S. GEOLOGICAL SURVEY, DENVER, COLORADO 80225, OR WASHINGTON, D. C. 20242
A FOLDER DESCRIBING TOPOGRAPHIC MAPS AND SYMBOLS IS AVAILABLE ON REQUEST

3240
DEC 27 1967