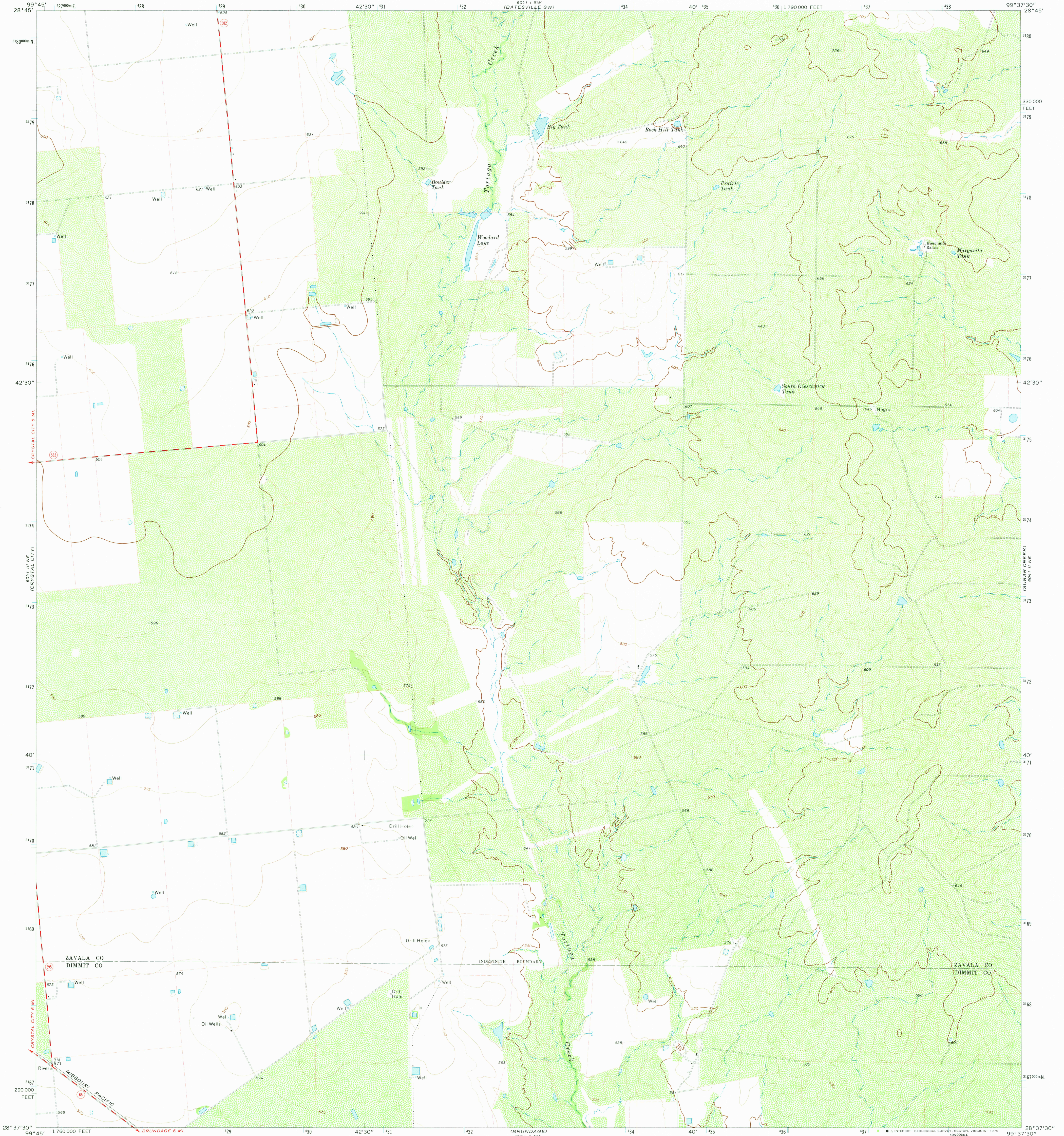


604 I I SE
(LA PRYOR SE)

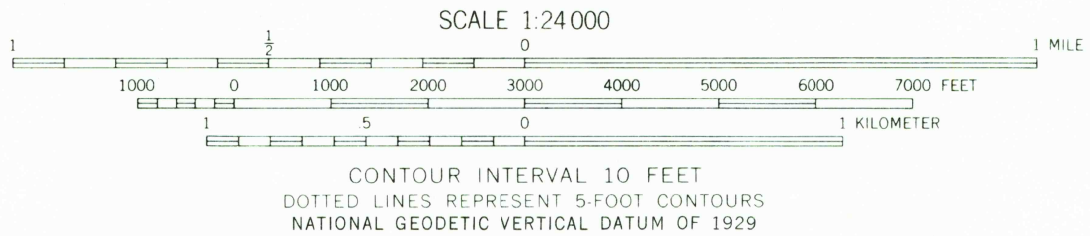
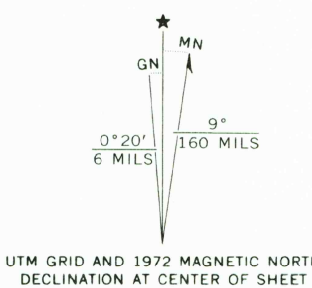
UNITED STATES
DEPARTMENT OF THE INTERIOR
GEOLOGICAL SURVEY

WOODARD LAKE QUADRANGLE
TEXAS
7.5 MINUTE SERIES (TOPOGRAPHIC)

604 I I SE
(LOMA I I SE)



Mapped, edited, and published by the Geological Survey
Control by USGS and USC&GS
Topography by photogrammetric methods from aerial
photographs taken 1971. Field checked 1972
Projection and 10,000-foot grid ticks: Texas
coordinate system, south central zone (Lambert conformal conic)
1000-meter Universal Transverse Mercator grid ticks,
zone 14, shown in blue. 1927 North American datum
Fine red dashed lines indicate selected fence lines



ROAD CLASSIFICATION
Primary highway, hard surface
Secondary highway, hard surface
Light-duty road, hard or improved surface
Unimproved road
Interstate Route
U. S. Route
State Route

THIS MAP COMPLIES WITH NATIONAL MAP ACCURACY STANDARDS
FOR SALE BY U.S. GEOLOGICAL SURVEY, DENVER, COLORADO 80225, OR RESTON, VIRGINIA 22092
A FOLDER DESCRIBING TOPOGRAPHIC MAPS AND SYMBOLS IS AVAILABLE ON REQUEST

WOODARD LAKE, TEX.
N2837.5-W9937.5/7.5
1972
AMS 6041 II NW-SERIES V882

USGS
Historical File
Topographic Division

MAR 2 1 1975
604 I I SE