

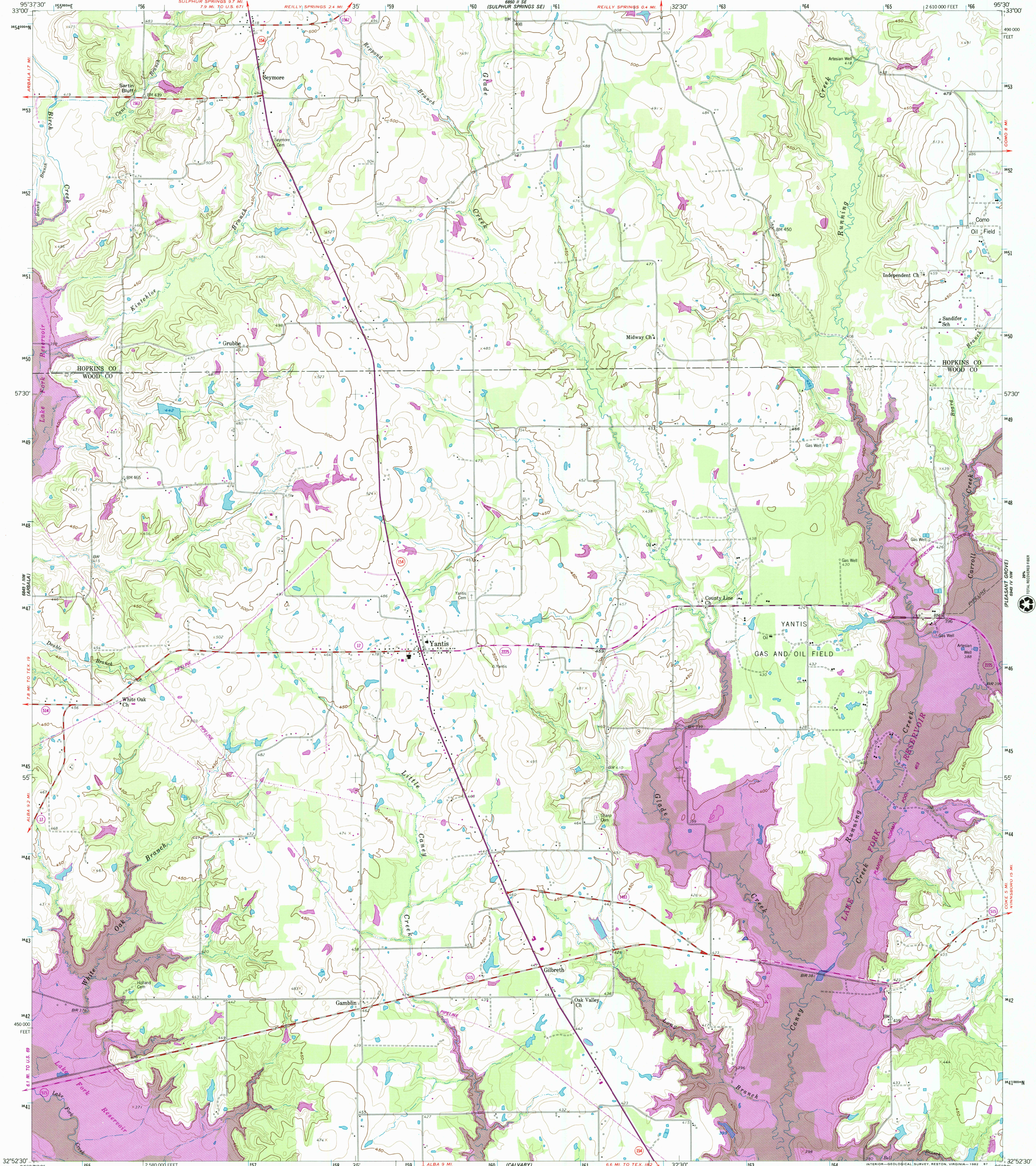
6849 15' SW  
(ALBA 15' SW)



U.S. DEPARTMENT OF THE INTERIOR  
U.S. GEOLOGICAL SURVEY

YANTIS QUADRANGLE  
TEXAS  
7.5 MINUTE SERIES (TOPOGRAPHIC)  
NE/4 ALBA 15' QUADRANGLE  
2 610 000 FEET

6849 15' SW  
(COMO 8' SW)



32°52'30"  
95°37'30"

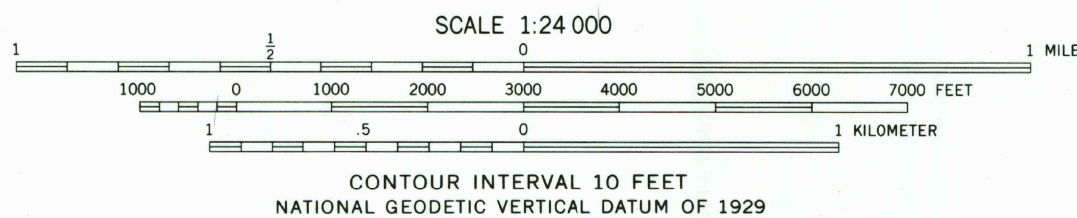
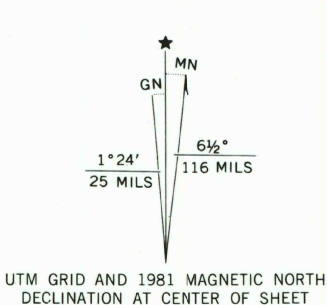
Mapped, edited, and published by the Geological Survey  
Control by USGS and NOS/NOAA  
Topography from aerial photographs by photogrammetric methods  
Aerial photographs taken 1957. Field check 1959

Polyconic projection, 1927 North American datum  
10,000-foot grid based on Texas coordinate system,  
north central zone  
1000-meter Universal Transverse Mercator grid ticks,  
zone 15, shown in blue

To place on the predicted North American Datum 1983  
move the projection lines 10 meters south and  
22 meters east as shown by dashed corner ticks

Revisions shown in purple and woodland compiled from  
aerial photographs taken 1978 and other source data  
This information not field checked. Map edited 1981

Purple hatching indicates areas to be submerged



THIS MAP COMPLIES WITH NATIONAL MAP ACCURACY STANDARDS  
FOR SALE BY U.S. GEOLOGICAL SURVEY  
P.O. BOX 25286, DENVER, COLORADO 80225  
A FOLDER DESCRIBING TOPOGRAPHIC MAPS AND SYMBOLS IS AVAILABLE ON REQUEST



QUADRANGLE LOCATION

3295-344

ROAD CLASSIFICATION  
Primary highway, hard surface  
Secondary highway, hard surface  
Light-duty road, hard or improved surface  
Unimproved road  
Interstate Route  
U. S. Route  
State Route

OCT 31 2002  
USGS NMD  
HISTORICAL MAP ARCHIVES

YANTIS, TEX.  
NE/4 ALBA 15' QUADRANGLE  
N2525.5-W9530.7.5

1959  
PHOTOREVISED 1981  
DMA 6849 1 NE-SERIES W882

