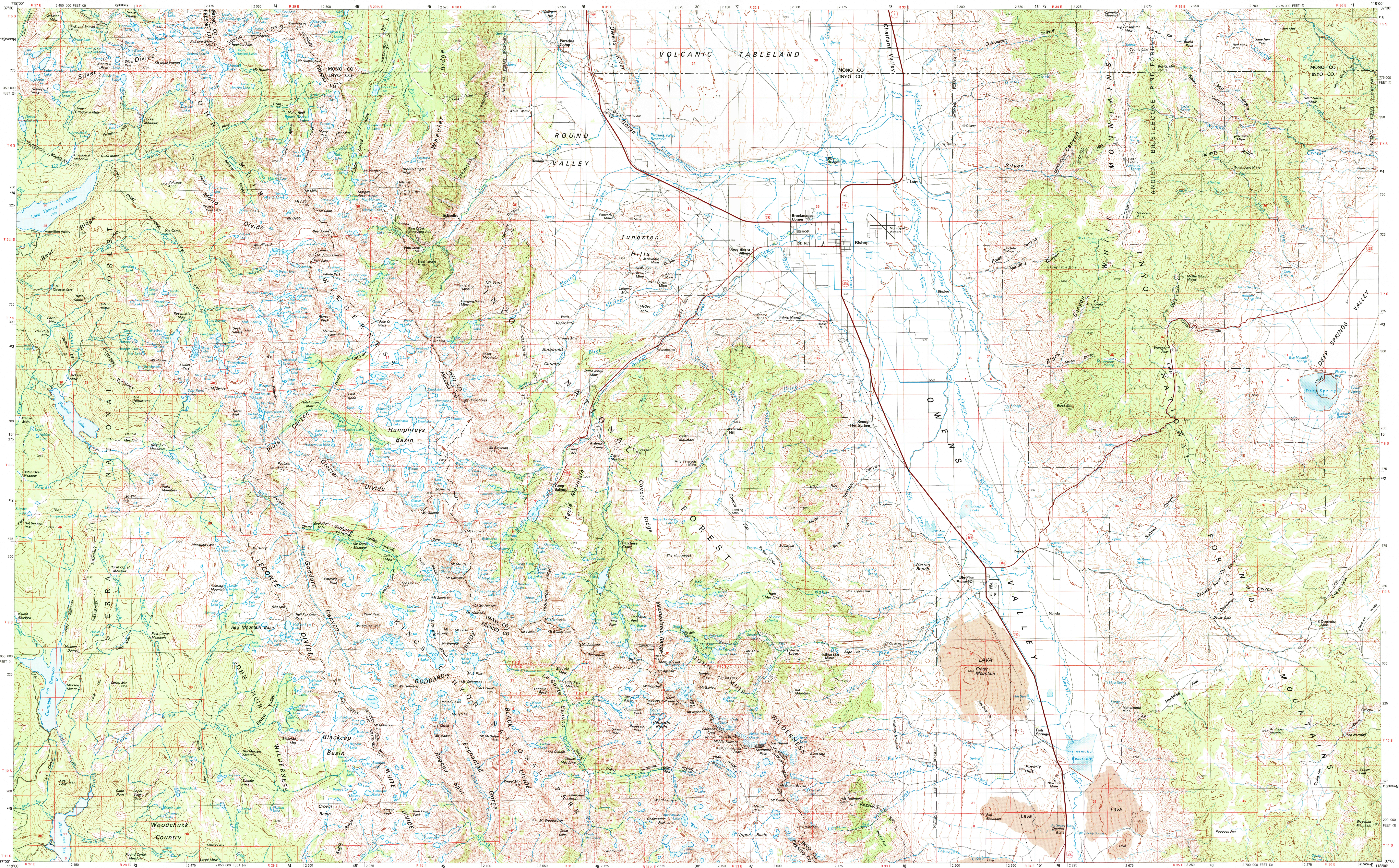


BISHOP, CALIFORNIA

30 X 60 MINUTE SERIES (TOPOGRAPHIC)



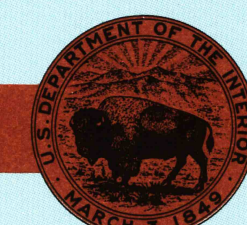
Bishop
CALIFORNIA

**1:100 000-scale metric
topographic map**



30 X 60 MINUTE QUADRANGLE
SHOWING

- Contours and elevations in meters
- Highways, roads and other manmade structures
- Water features
- Woodland areas
- Geographic names



GEOLOGICAL SURVEY

1978
PHOTOINSPECTED 1988

Produced by the United States Geological Survey

Compiled from USGS 1:62 500-scale topographic maps dated 1949-1962. Planimetry revised from aerial photographs taken 1976 and other source data. Revised information not field checked. Map edited 19

1927 North American Datum (NAD 27). Projection and 10 000-meter grid: Universal Transverse Mercator, zone 11. 25 000-foot ticks: California coordinate system, zones 4 and 5. The difference between NAD 27 and North American Datum 1983 (NAD 83) is too small to show at this scale. The values of the shift between the datums for 7.5-minute intersections are given in USGS Bulletin 1875.

Land lines within T 9 S-R 29 E, T 9 S-R 30 E, T 10 S-R 29 and T 10 S-R 30 E are omitted because of insufficient data

Protracted land lines are dashed
Area covered by dashed light-blue pattern
is subject to controlled inundation

There may be private inholdings within the boundaries of the National or State reservations shown on this map

Map photoinspected using 1987-88 photographs
No major culture or drainage changes found

CONTOUR INTERVAL 50 METERS
NATIONAL GEODETIC VERTICAL DATUM OF 1929

ELEVATIONS SHOWN TO THE NEAREST METER

THIS MAP COMPLIES WITH NATIONAL MAP ACCURACY STANDARDS

CONVERSION TABLE	
Meters	Feet
1	3.2808
2	6.5617
3	9.8425
4	13.1234
5	16.4042
6	19.6850
7	22.9659
8	26.2467
9	29.5276
10	32.8084

To convert meters to feet multiply by 3.2808

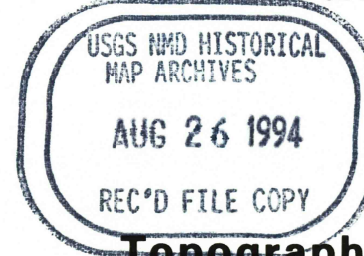
To convert feet to meters multiply by 0.3048

UTM grid convergence (GN) and 1975 magnetic declination (MN) at center of map
Diagram is approximate

ASSIGNING RANGES	
1	2
4	
6	7

1 Yosemite Valley
2 Benton Range
3 Goldfield
4 Shaver Lake
5 Last Chance R
6 Fresno
7 Mount Whitney
8 Saline Valley

FOR SALE BY U. S. GEOLOGICAL SURVEY, DENVER, COLORADO
OR RESTON, VIRGINIA 22092



Topographic Map Symbols

- | | |
|---|--|
| Primary highway, hard surface | |
| Secondary highway, hard surface | |
| Light duty road, principal street, hard or improved surface | |
| Other road or street; trail | |
| State boundary | |
| National boundary | |
| Railroad: standard gage, narrow gage | |
| Canal; overpass; underpass | |
| Funnel, road, railroad | |
| Water area; locality; elevation | |
| Airport, landing field, landing strip | |
| National boundary | |
| State boundary | |
| County boundary | |
| National or State reservation boundary | |
| U. S. public lands survey: range, township; section | |
| Range, township; section line: protected | |
| Power transmission line: pipeline | |
| Canal; dam with lock | |
| Cemetary; building | |
| Mineral shaft; adit; or cave, mine, quarry; gravel pit | |
| Waterway; canal; stream; age; U. S. location monument | |
| Dike, fill, overflow | |
| Disturbed surface: strip mine, levee, etc. | |
| Contour; intermediate; intermediate | |
| Bathymetric contours; index; intermediate | |
| Stream; lake; perennial; intermittent | |
| Rapids, large and small; falls, large and small | |
| Area to be submerged; marsh, swamp | |
| Land subject to controlled inundation; woodland | |
| Swamp; mangrove | |
| Rebar; culvert | |

A pamphlet describing topographic maps is available on request.

● INTERIOR—GEOLOGICAL SURVEY, RESTON, VIRGINIA—1994

BISHOP, CALIFORNIA

37118-A1-TM-100

1978

PHOTOINSPECTED 1988