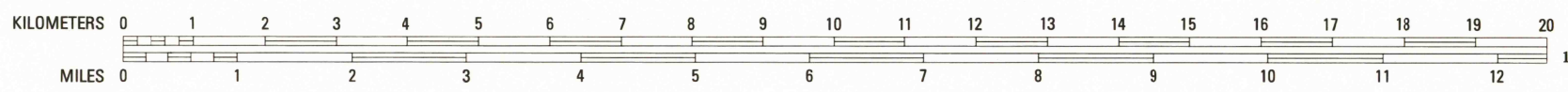


30X60 MINUTE SERIES (TOPOGRAPHIC)



RED BLUFF, CALIFORNIA
N4000-W12200/30X60
1979

30 X 60 MINUTE QUADRANGLE
SHOWING

- Contours and elevations in meters
- Highways, roads and other manmade structures
- Water features
- Woodland areas
- Geographic names



GEOLOGICAL SURVEY

1979

Produced by the United States Geological Survey

Compiled from USGS 1:24 000 and 1:62 500 scale topographic maps dated 1951-1969. Planimetry revised from aerial photographs taken 1976 and other source data. Revised information not field checked. Map edited 1979

Projection and 10 000-meter grid, zone 10,
Universal Transverse Mercator

25 000-foot grid ticks based on California coordinate system,
zone 1. 1927 North American Datum

To place on the predicted North American Datum 1983
move the projection lines 18 meters north and 93 meters east

There may be private inholdings within the boundaries of
the National or State reservations shown on this map

CONTOUR INTERVAL 50 METERS
WITH SUPPLEMENTARY CONTOURS AT 10-METER INTERVALS
NATIONAL GEODETIC VERTICAL DATUM OF 1929

THIS MAP COMPLIES WITH NATIONAL MAP ACCURACY STANDARDS

CONVERSION TABLE

Meters	Feet
1	3,280.8
2	6,561.7
3	9,842.5
4	13,124
5	16,404.2
6	19,685.0
7	22,965.9
8	26,247
9	29,527.6
10	32,808.4

To convert meters to feet multiply by 3.2808

To convert feet to meters multiply by 0.3048

DECLINATION DIAGRAM

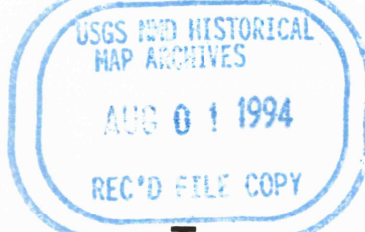
UTM grid convergence (GN) and 1975 magnetic declination (MAG) at center of map
Diagram is approximate

ADJOINING MAPS

1	2
4	5
6	7
8	9

1 Hayford
2 Redding
3 Burney
4 Garberville
5 Lake Almanor
6 Covelo
7 Willows
8 Chico

FOR SALE BY U. S. GEOLOGICAL SURVEY, DENVER, COLORADO 80219
OR RESTON, VIRGINIA 22092



Topographic Map Symbols

- Secondary highway, hard surface
Secondary highway, hard surface
Light duty road, principal street, hard or improved surface
Low road or street; trail
Route marker: Interstate, U. S.; State
Railroad: standard gauge, narrow gauge
Bridge: overpass; underpass
Tunnel: road; railroad
Built up area, locality, elevation
Airport; landing field; landing strip
National boundary
State boundary
County boundary
National or State reservation boundary
Land grant boundary
U. S. public lands survey: range, township; section
Range, township, section: plot, projected
Power transmission line; pipeline
Dam; dam with lock
Cemetery; building
Windmill; water well; spring
Mine shaft; adit or cave; mine, quarry; gravel pit
Carnage station, picnic area; U. S. location monument
Ranch; dwelling
Distorted surface: strip mine, lava, sand
Contours: index; intermediate; supplementary
Bathymetric contours: index; intermediate
Stream, lake: perennial; intermittent
Rapid, large and small; falls, large and small
Area to be submerged; marsh, swamp
Land subject to controlled inundation; woodland
Swamp; meadow
Orchard; vineyard