

Produced by the United States Geological Survey  
in cooperation with the U.S. Forest Service

Compiled from USGS 1:24 000-scale topographic maps  
dated 1968-1974. Planimetry revised from aerial photographs  
from 1977-79 and other data from sources data. Revised information not  
field checked. Map edited 1982

Projection and 10 000-meter grid, zone 11,  
Universal Transverse Mercator

50 000-foot grid ticks based on California coordinate system,  
zones 5 and 7. 1927 North American Datum

Place on the predicted North American Datum 1983  
move the projection lines 4 meters north and 83 meters east

There may be private inholdings within the boundaries of  
the National or State reservations shown on this map

CONTOUR INTERVAL 50 METERS  
NATIONAL GEODETIC VERTICAL DATUM OF 1929

THIS MAP COMPLIES WITH NATIONAL MAP ACCURACY STANDARDS

FOR SALE BY U.S. GEOLOGICAL SURVEY,  
P.O. BOX 25286, DENVER, COLORADO, 8022

### CONVERSION TABLE

Meters	Feet
1	3.2808
2	6.5617
3	9.8425
4	13.1234
5	16.4042
6	19.6850
7	22.9659
8	26.2467
9	29.5275
10	32.8084

To convert meters to feet multiply by 3.2808

To convert feet to meters multiply by 0.3048

### DECLINATION DIAGRAM

UTM grid magnetic declination (GN) and 1982 magnetic declination (MN) at center of map Diagram is approximate

### ADJOINING MAPS

1	2	3
4		5
6	7	8

- 1 Tetachapi
- 2 Caddaback Lake
- 3 Soda Mountains
- 4 Lancaster
- 5 Newberry Springs
- 6 Los Angeles
- 7 San Bernardino
- 8 Big Bear Lake

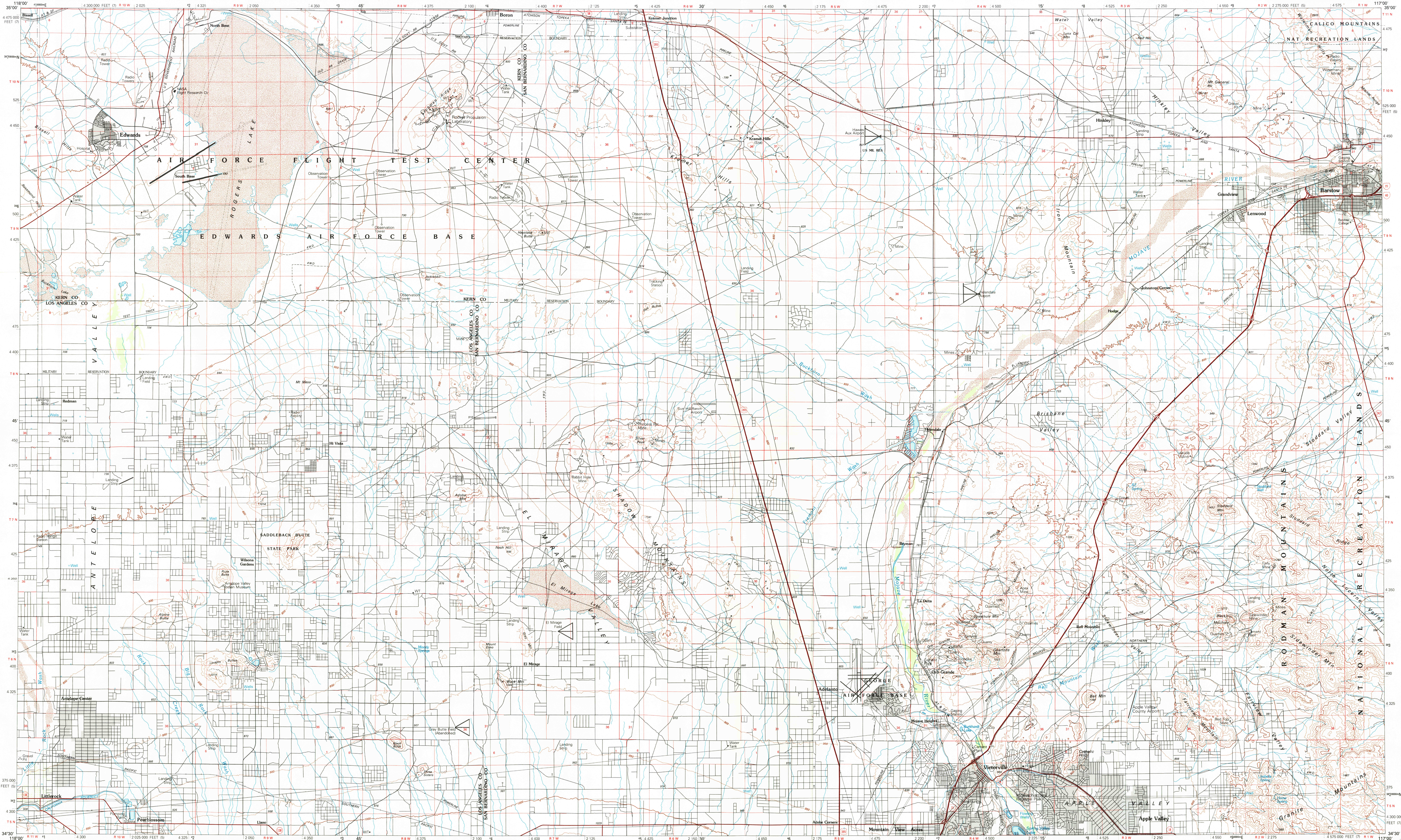
ISBN 0-607-10002-8



9 780607 100020

heavy highway, hard surface  
 concrete highway, hard surface  
 light duty road, principal street, hard or improved surface  
 road or street; trail  
 road marker; Interstate, U. S., State  
 road; standard gauge, narrow gauge  
 railroad; overpass, underpass  
 road; road, railroad  
 built up area; locality; elevation  
 airport; landing field; landing strip  
 national boundary  
 state boundary  
 county boundary  
 national or State reservation boundary  
 grant boundary  
 U. S. public lands; range, township; section  
 range, township; section line; protected  
 power transmission line; pipeline  
 dam; dam with lock  
 cemetery, building  
 pond; water, well; spring  
 lake; water shaft; art or cave mine, quarry; gravel pit  
 hydroelectric; picnic area; U. S. National monument  
 junc; ditch dwelling  
 stored surface, strip mine, lake, sand  
 reservoir; lake; intermediate, supplementary  
 arithmetic compass, index, intermediate  
 compass, lake, peninsula, intermittent  
 swamp, large and small; large and small  
 not to be submerged; marsh, swamp  
 not and subject to controlled inundation; woodland  
 bar; mangrove  
 chart; vineyard

A pamphlet describing topographic maps is available on request.



**VICTORVILLE, CALIFORNIA**

N3430-W11700/30X60  
1080

198