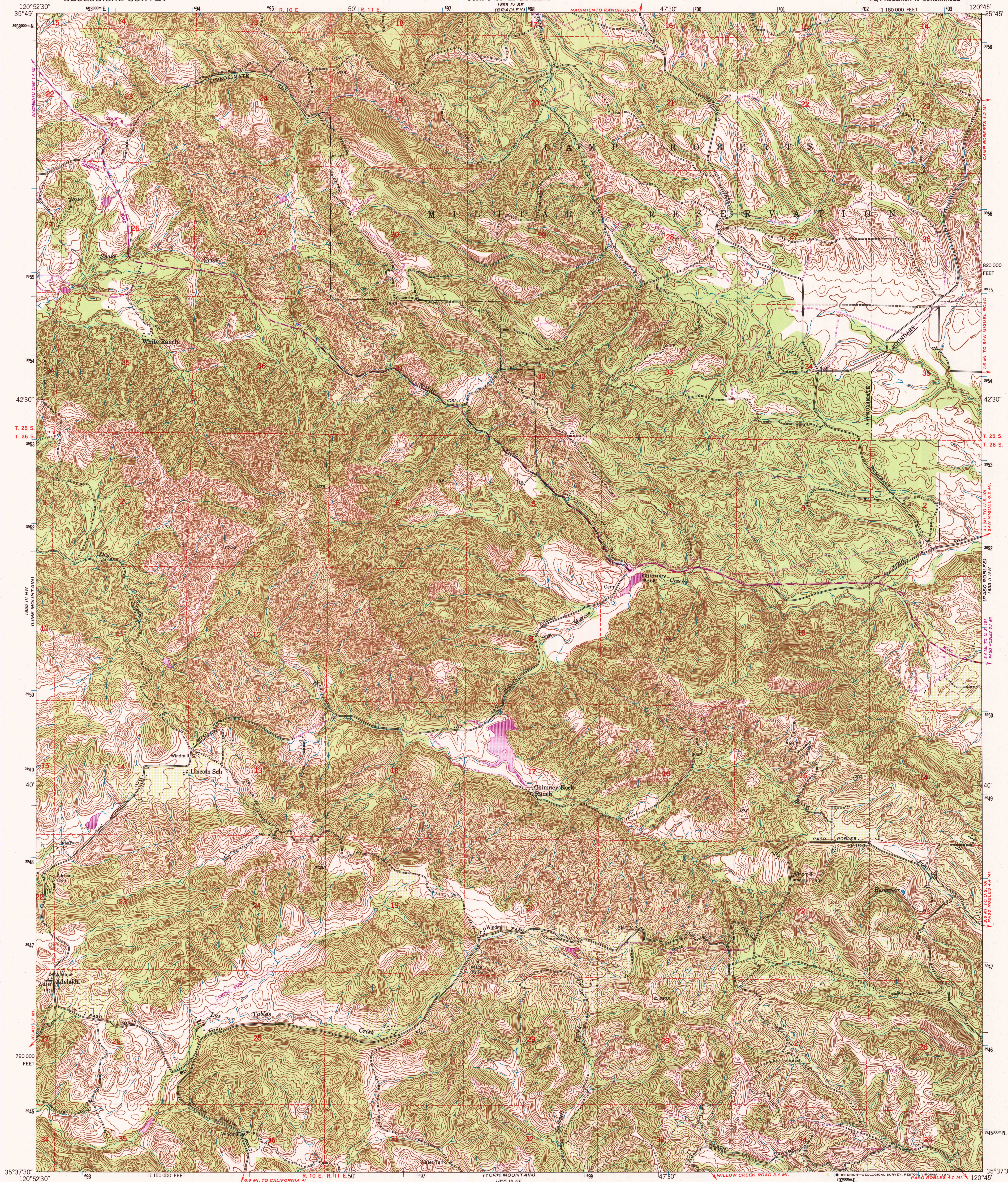


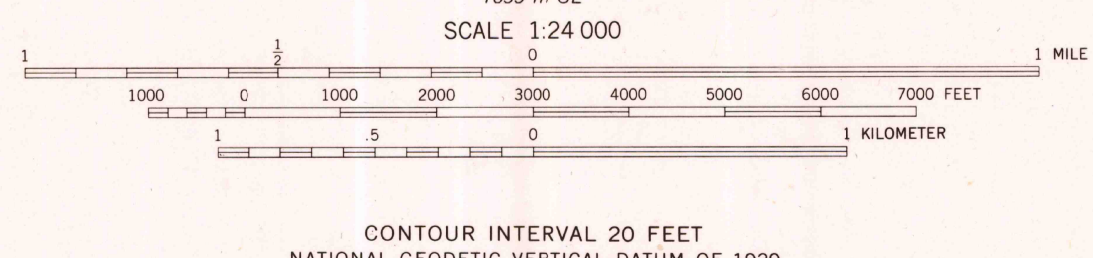
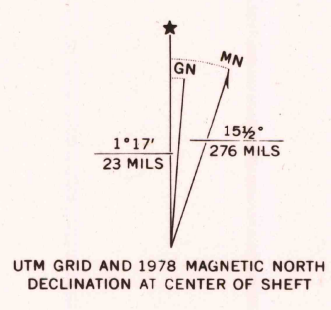
UNITED STATES
DEPARTMENT OF THE INTERIOR
GEOLOGICAL SURVEY

UNITED STATES
DEPARTMENT OF THE ARMY
CORPS OF ENGINEERS

ADELAIDA QUADRANGLE
CALIFORNIA-SAN LUIS OBISPO CO.
7.5 MINUTE SERIES (TOPOGRAPHIC)
NE/4 ADELAIDA 15' QUADRANGLE



Maped by the Army Map Service
Published for civil use by the Geological Survey
Control by USGS, NOS/NOAA, and USCE
Topography from aerial photographs by multiplex methods
Aerial photographs taken 1947. Field check 1948
Polyconic projection. 1927 North American datum
10,000-foot grid based on California coordinate system,
zone 5
No distinction is made between dwellings, barns,
commercial and industrial buildings
Unchecked elevations are shown in brown
Dashed land lines indicate approximate locations
1000-meter Universal Transverse Mercator grid ticks,
zone 10, shown in blue



ROAD CLASSIFICATION			
Heavy-duty	4 LANE 6 LANE	Light-duty	
Medium-duty	4 LANE 6 LANE	Unimproved dirt	=====
U. S. Route		State Route	

ADELAIDA, CALIF.
NE/4 ADELAIDA 15' QUADRANGLE
N3537.5-W12045/7.5
1948
PHOTOREVISED 1978
AMS 1855 III NE-SERIES V895

THIS MAP COMPLIES WITH NATIONAL MAP ACCURACY STANDARDS
FOR SALE BY U. S. GEOLOGICAL SURVEY, DENVER, COLORADO 80225, OR RESTON, VIRGINIA 22092
A FOLDER DESCRIBING TOPOGRAPHIC MAPS AND SYMBOLS IS AVAILABLE ON REQUEST

Revisions shown in purple and woodland compiled by the
Geological Survey from aerial photographs taken 1976 and
other source data. This information not field checked.
Map edited 1978