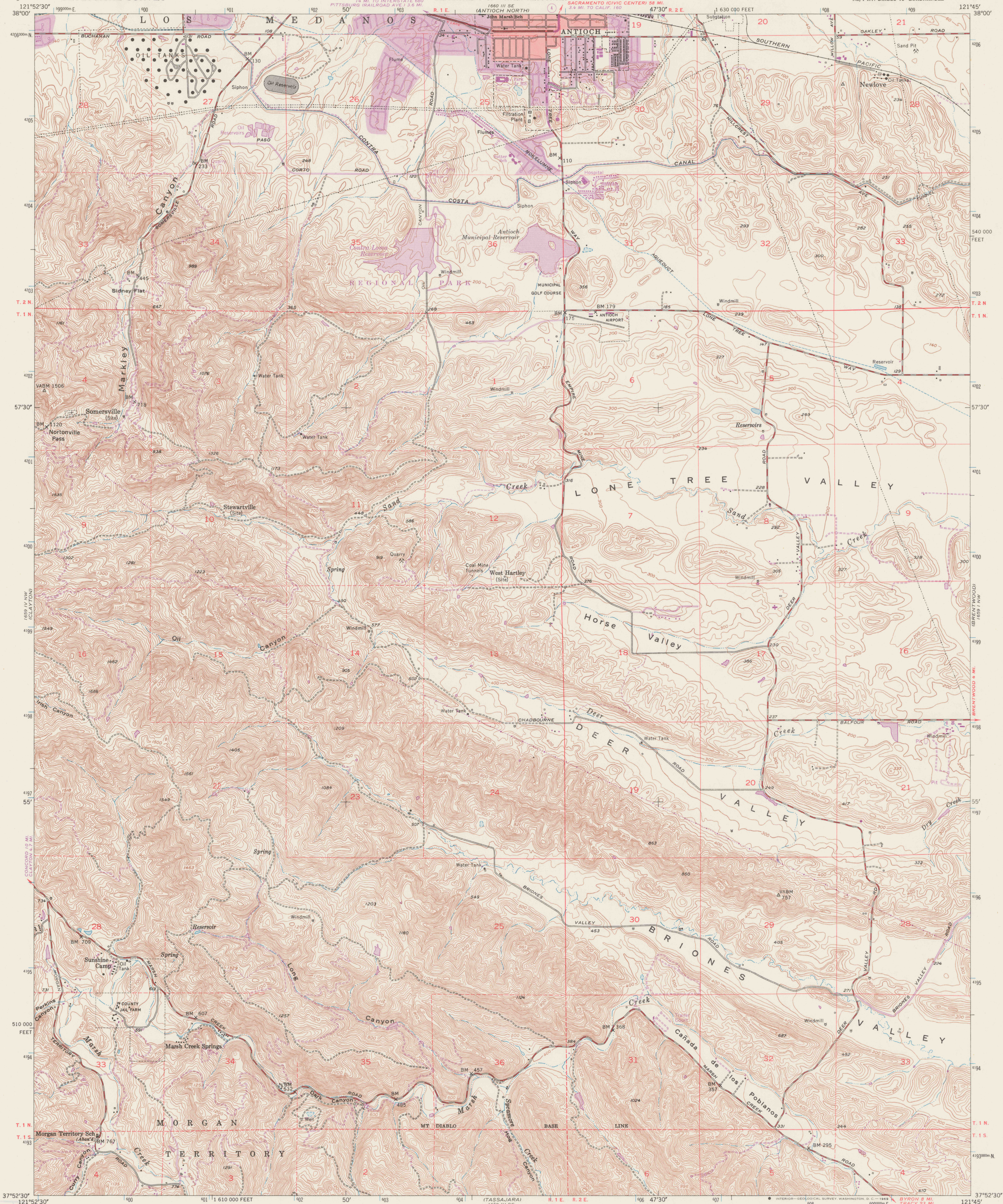


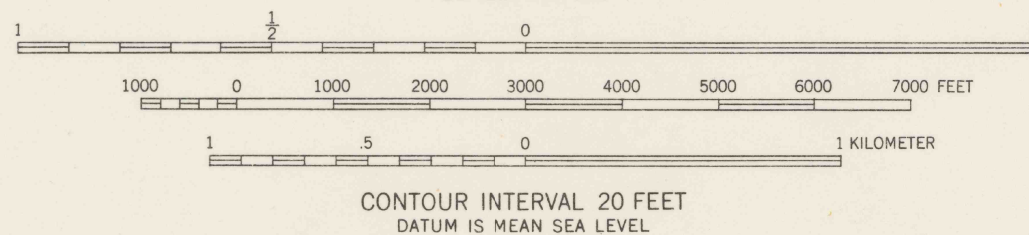
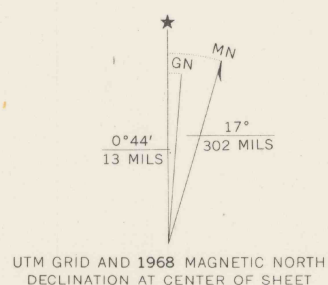
UNITED STATES
DEPARTMENT OF THE INTERIOR
GEOLOGICAL SURVEY

STATE OF CALIFORNIA
DEPARTMENT OF WATER RESOURCES

ANTIOCH SOUTH QUADRANGLE
CALIFORNIA-CONTRA COSTA CO.
7.5 MINUTE SERIES (TOPOGRAPHIC)
NE/4 MT. DIABLO 15' QUADRANGLE



Mapped, edited, and published by the Geological Survey
Control by USGS, USC&GS, and California State Land Commission
Topography from aerial photographs by multiplex methods
Aerial photographs taken 1949. Field check 1953
Polyconic projection. 1927 North American datum
10,000-foot grid based on California coordinate system, zone 3
1000-meter Universal Transverse Mercator grid ticks,
zone 10, shown in blue
Red tint indicates areas in which only landmark buildings are shown
Data shown in purple compiled from aerial photographs taken 1968
This information not field checked
Purple tint indicates extension of urban areas



CONTOUR INTERVAL 20 FEET
DATUM IS MEAN SEA LEVEL

ROAD CLASSIFICATION
Heavy-duty ——— Light-duty ———
Medium-duty ——— Unimproved dirt ———
State Route



FOR EARLIEST
EDITION OF
THIS MAP SEE
3052.C45 31.U5:
Lone Tree Valley

ANTIOCH SOUTH, CALIF.
NE/4 MT. DIABLO 15' QUADRANGLE
N3752.5-W12145/7.5

1953
AMS 1659 IV NE-SERIES V895
REFERENCE

THIS MAP COMPLIES WITH NATIONAL MAP ACCURACY STANDARDS
FOR SALE BY U. S. GEOLOGICAL SURVEY, DENVER, COLORADO 80225, OR WASHINGTON, D. C. 20242
A FOLDER DESCRIBING TOPOGRAPHIC MAPS AND SYMBOLS IS AVAILABLE ON REQUEST

REFERENCE
3700
Var
U5
7.5
ed. 1968
2019