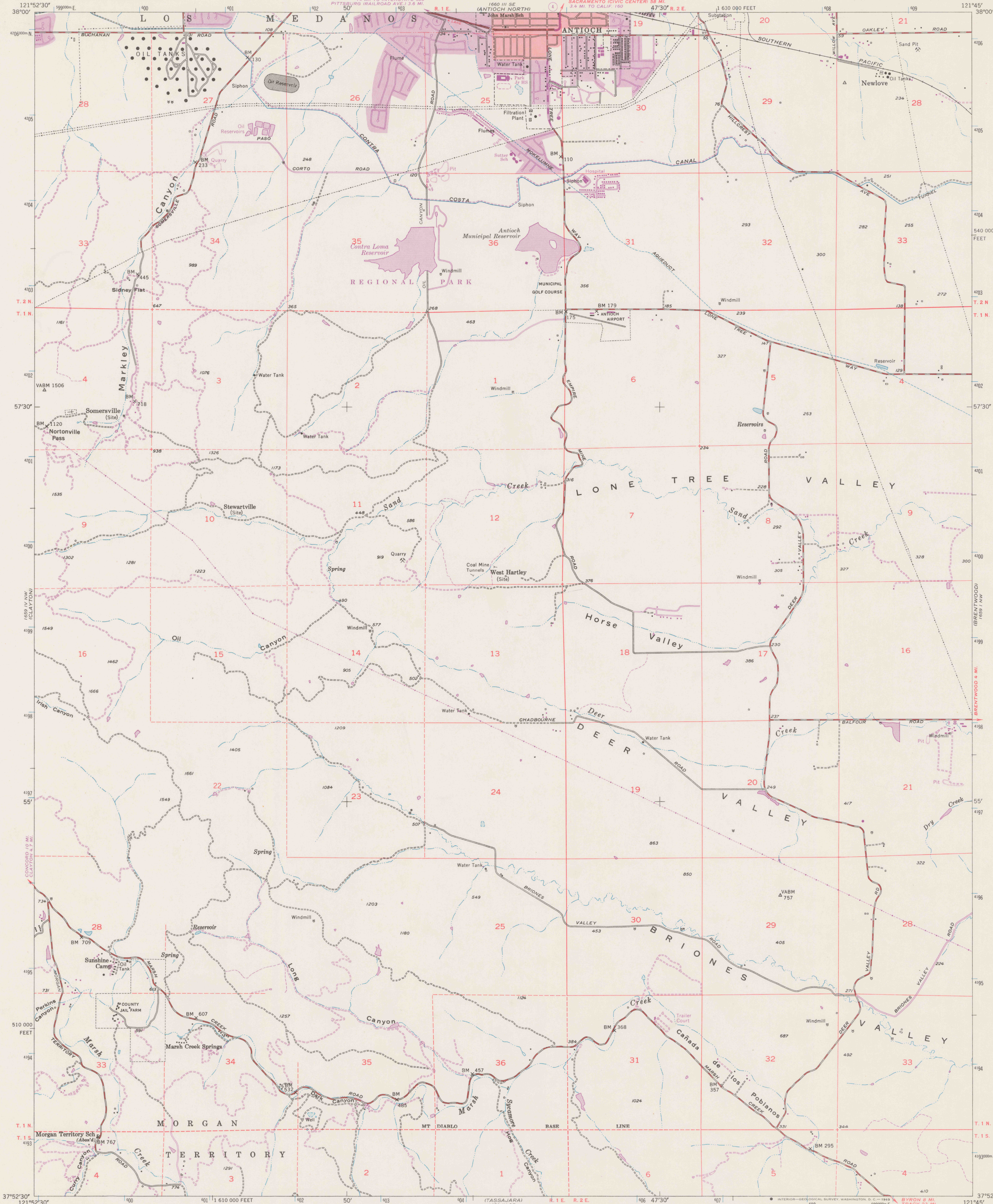


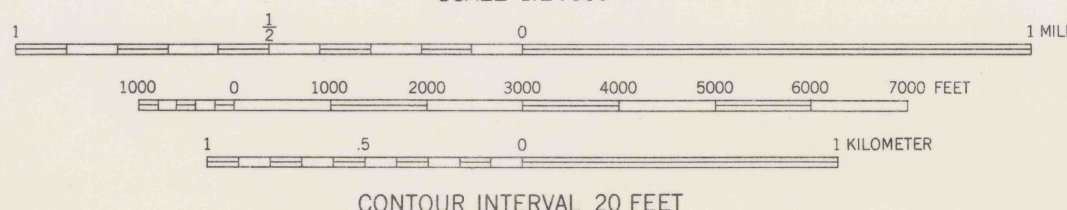
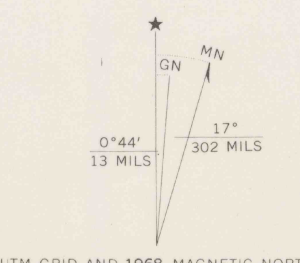
UNITED STATES  
DEPARTMENT OF THE INTERIOR  
GEOLOGICAL SURVEY

STATE OF CALIFORNIA  
DEPARTMENT OF WATER RESOURCES

ANTIOCH SOUTH QUADRANGLE  
CALIFORNIA-CONTRA COSTA CO.  
7.5 MINUTE SERIES (TOPOGRAPHIC)  
NE/4 MT. DIABLO 15' QUADRANGLE



Mapped, edited, and published by the Geological Survey  
Control by USGS, USC&GS, and California State Land Commission  
Topography from aerial photographs by multiplex methods  
Aerial photographs taken 1949. Field check 1953  
Polyconic projection. 1927 North American datum  
10,000-foot grid based on California coordinate system, zone 3  
1000-meter Universal Transverse Mercator grid ticks,  
zone 10, shown in blue  
Red tint indicates areas in which only landmark buildings are shown  
Data shown in purple compiled from aerial photographs taken 1968  
This information not field checked  
Purple tint indicates extension of urban areas



FOR EARLIEST  
EDITION OF  
THIS MAP SEE  
3052.C4S 31.U5:  
Lone Tree Valley

ROAD CLASSIFICATION  
Heavy-duty ——— Light-duty ———  
Medium-duty ——— Unimproved dirt ———  
○ State Route  
REFERENCE  
ANTIOCH SOUTH, CALIF.  
NE/4 MT. DIABLO 15' QUADRANGLE  
N3752.5-W12145.7.5  
1953  
AMS 1659 IV NE-SERIES V895

THIS MAP COMPLIES WITH NATIONAL MAP ACCURACY STANDARDS  
FOR SALE BY U.S. GEOLOGICAL SURVEY, DENVER, COLORADO 80225, OR WASHINGTON, D.C. 20242  
A FOLDER DESCRIBING TOPOGRAPHIC MAPS AND SYMBOLS IS AVAILABLE ON REQUEST

DO NOT CIRCULATE

SPECIAL PRINTING  
Contours and woodland symbols omitted  
BYRON HOT SPRINGS