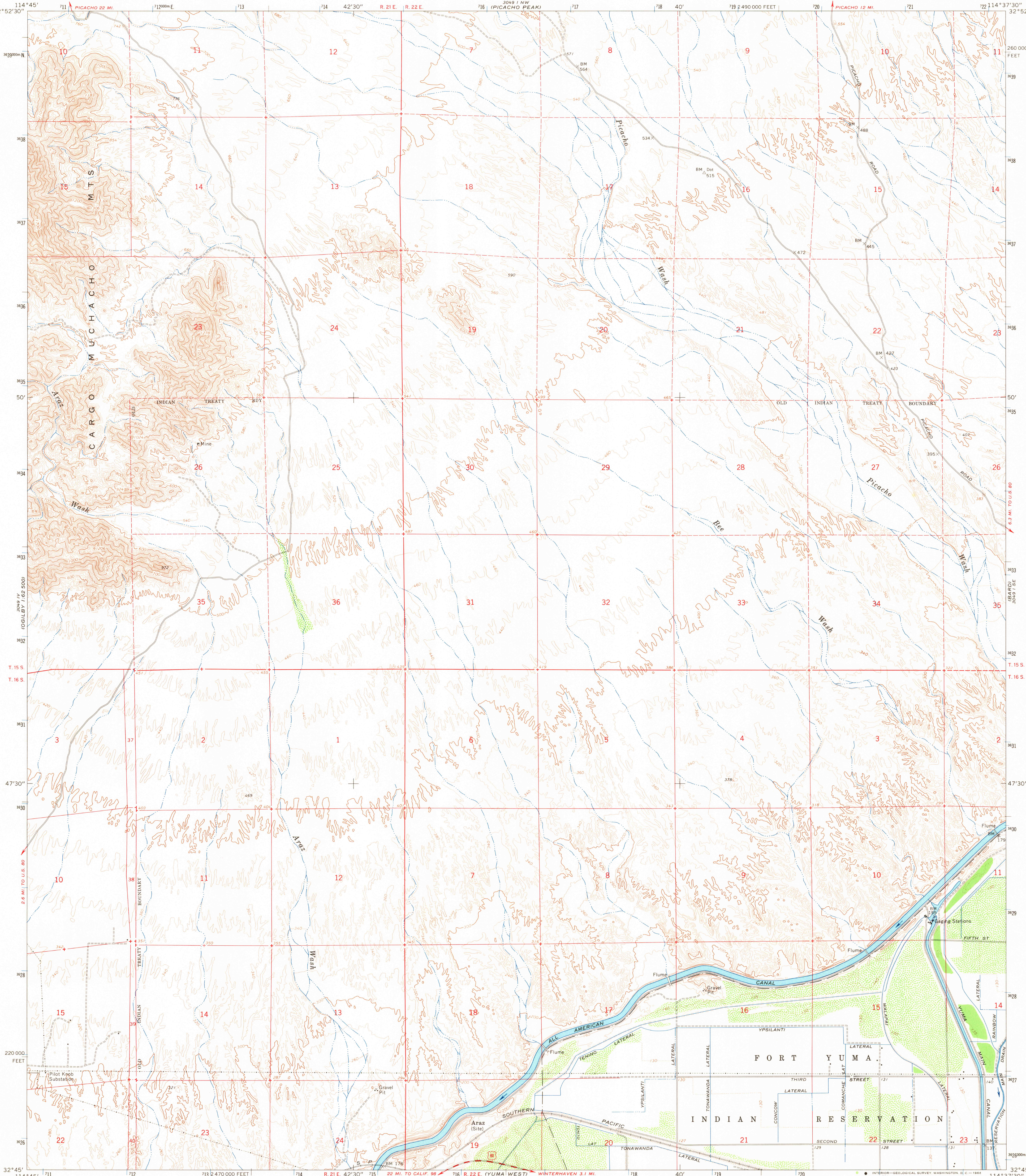
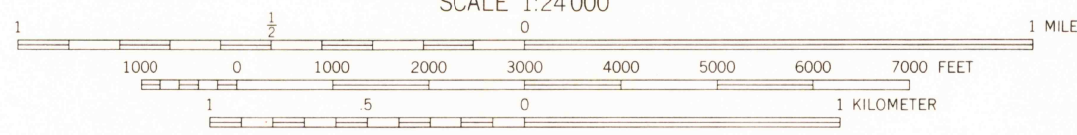
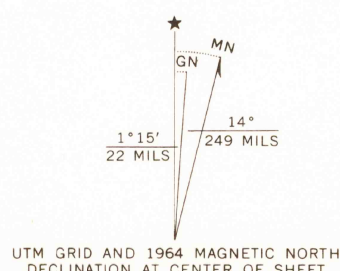


UNITED STATES  
DEPARTMENT OF THE INTERIOR  
GEOLOGICAL SURVEY

ARAZ QUADRANGLE  
CALIFORNIA-IMPERIAL CO.  
7.5 MINUTE SERIES (TOPOGRAPHIC)  
SW/4 PICACHO PEAK 15' QUADRANGLE



Mapped, edited, and published by the Geological Survey  
in cooperation with the State of California  
Control by USGS, USC&GS, USCE, and U. S. Bureau of Reclamation  
Topography by photogrammetric methods from aerial photographs  
taken 1948 and planetable surveys 1952. Revised from  
aerial photographs taken 1961. Field checked 1964  
Polyconic projection. 1927 North American datum  
10,000-foot grid based on California coordinate system,  
zone 6  
1000-meter Universal Transverse Mercator grid ticks,  
zone 11, shown in blue  
Where omitted, land lines have not been established



CONTOUR INTERVAL 20 FEET  
DOTTED LINES REPRESENT 5-FOOT CONTOURS  
DATUM IS MEAN SEA LEVEL

THIS MAP COMPLIES WITH NATIONAL MAP ACCURACY STANDARDS  
FOR SALE BY U. S. GEOLOGICAL SURVEY, DENVER, COLORADO 80225, OR WASHINGTON, D. C. 20242  
A FOLDER DESCRIBING TOPOGRAPHIC MAPS AND SYMBOLS IS AVAILABLE ON REQUEST

USGS  
Historical File  
Topographic Division



U.S.G.S.  
FUG COPY  
TOPOGRAPHIC DIVISION

ROAD CLASSIFICATION  
Medium-duty Road ——— Light-duty Road ———  
Unimproved dirt ——— U. S. Route

ARAZ, CALIF.  
SW/4 PICACHO PEAK 15' QUADRANGLE  
N3245-W11437.5/7.5

1964  
AMS 3049 1 SW-SERIES V895

3205  
SEP 19 1966