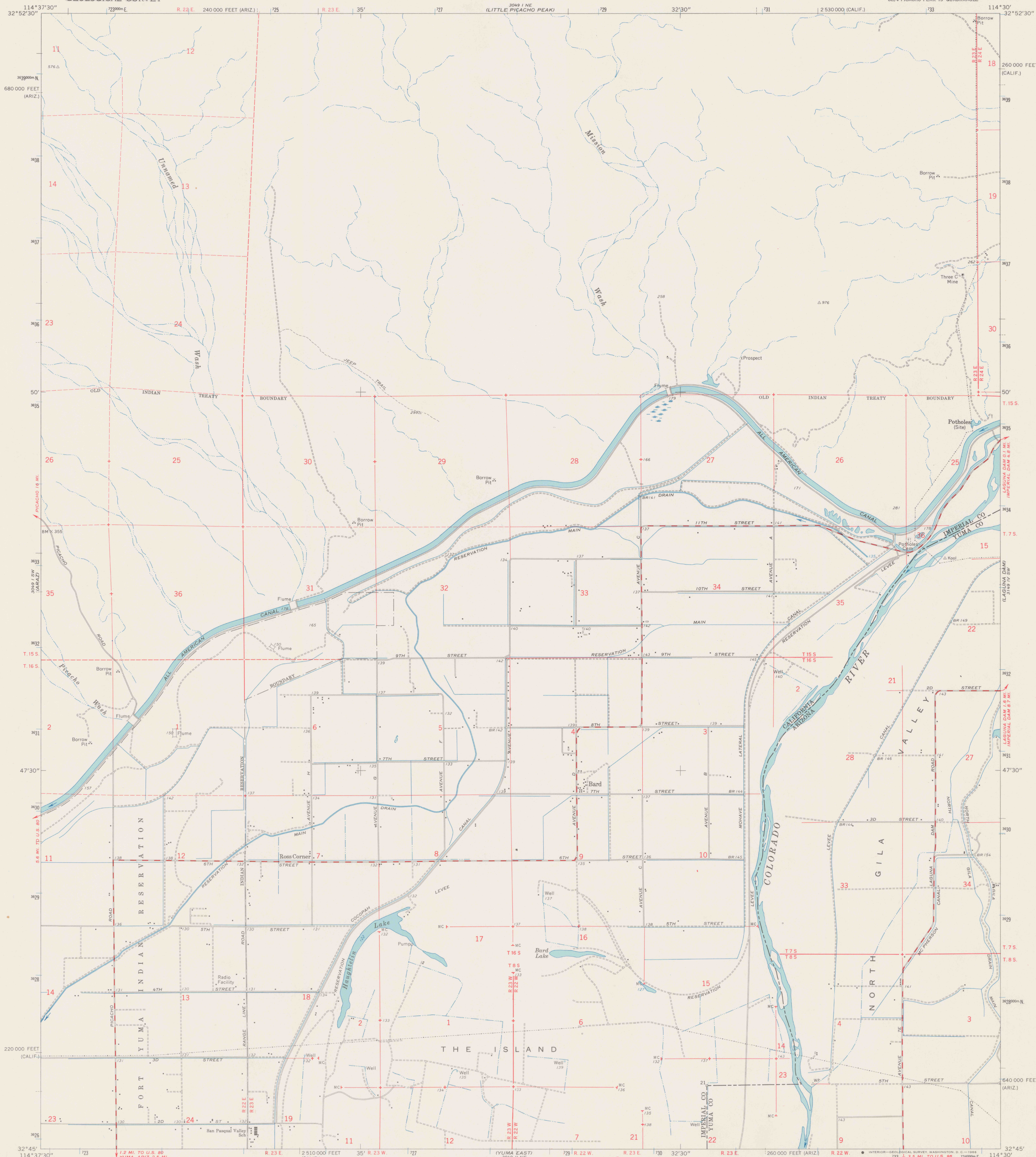


UNITED STATES
DEPARTMENT OF THE INTERIOR
GEOLOGICAL SURVEY

BARD QUADRANGLE
CALIFORNIA—ARIZONA
7.5 MINUTE SERIES (TOPOGRAPHIC)
SE/4 PICACHO PEAK 15' QUADRANGLE

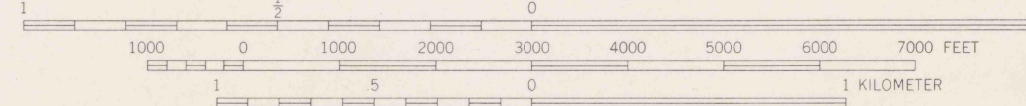
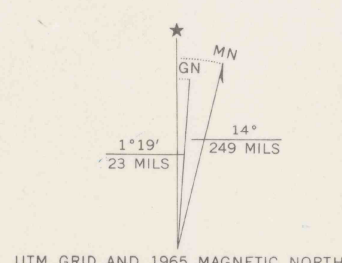


Mapped, edited, and published by the Geological Survey
in cooperation with the State of California

Control by USGS, USC&GS, USCE, and City of Los Angeles
Topography by photogrammetric methods from aerial photographs
taken 1948, and by planetable surveys 1952. Revised from aerial
photographs taken 1961, and by planetable surveys 1965

Polyconic projection, 1927 North American datum
10,000-foot grids based on California coordinate system, zone 6
and Arizona coordinate system, west zone
1000-meter Universal Transverse Mercator grid ticks,
zone 11, shown in blue

Where omitted, land lines have not been established



CONTOUR INTERVAL 20 FEET
DOTTED LINES REPRESENT 5-FOOT CONTOURS
DATUM IS MEAN SEA LEVEL

THIS MAP COMPLIES WITH NATIONAL MAP ACCURACY STANDARDS
FOR SALE BY U.S. GEOLOGICAL SURVEY, DENVER, COLORADO 80225, OR WASHINGTON, D. C. 20242
A FOLDER DESCRIBING TOPOGRAPHIC MAPS AND SYMBOLS IS AVAILABLE ON REQUEST



ROAD CLASSIFICATION
Medium-duty ——— Light-duty ———
Unimproved dirt ———

DO NOT CIRCULATE

BARD, CALIF.—ARIZ.
SE/4 PICACHO PEAK 15' QUADRANGLE
N3245—W11430/7.5

1965
AMS 3049 I SE—SERIES V895

REFERENCE
REF 37008
Var U5
7.5
ed. 1965
1 ep. 1946 pp