

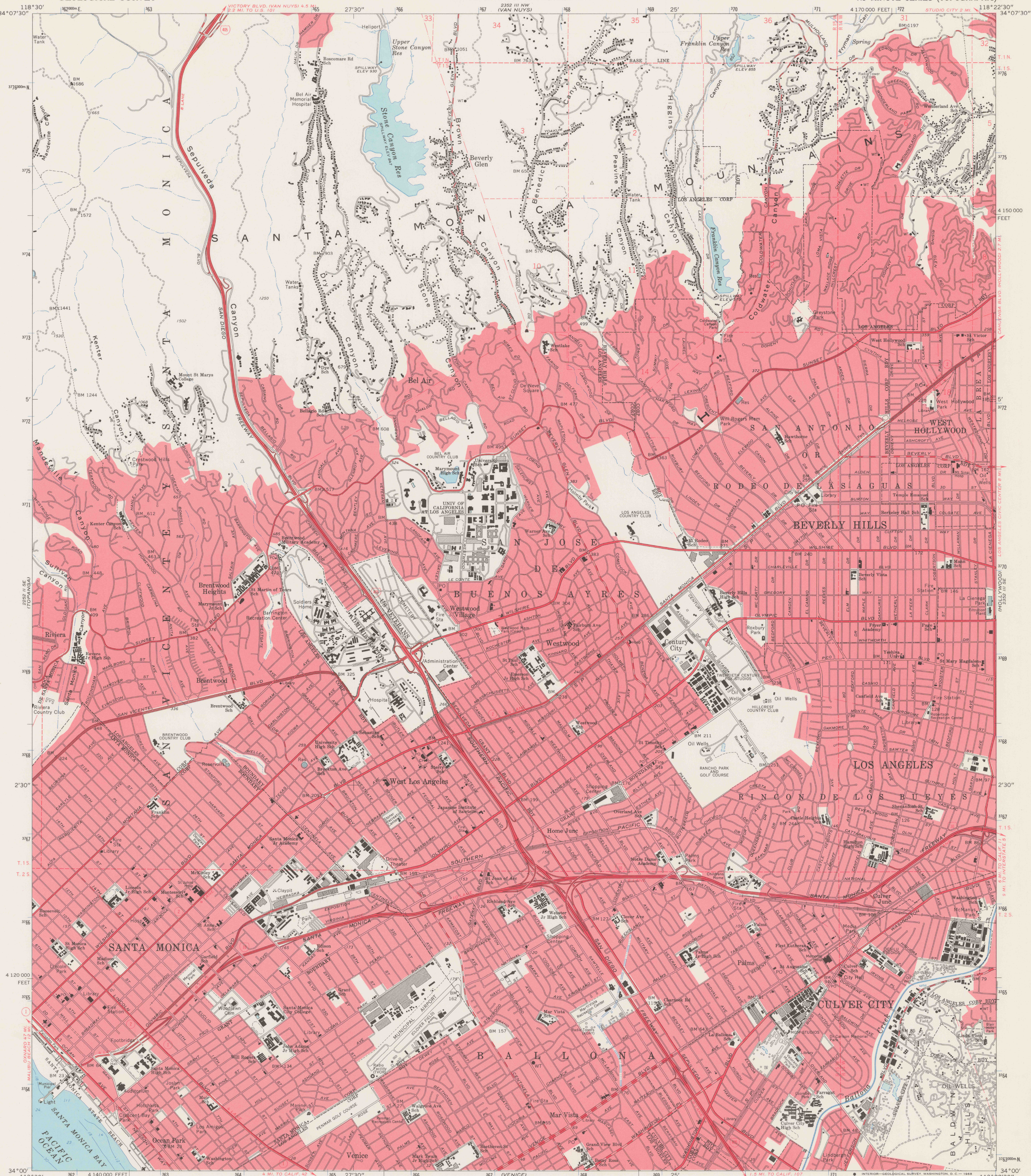
1966 II 15
CANOGA PARK

UNITED STATES
DEPARTMENT OF THE INTERIOR
GEOLOGICAL SURVEY

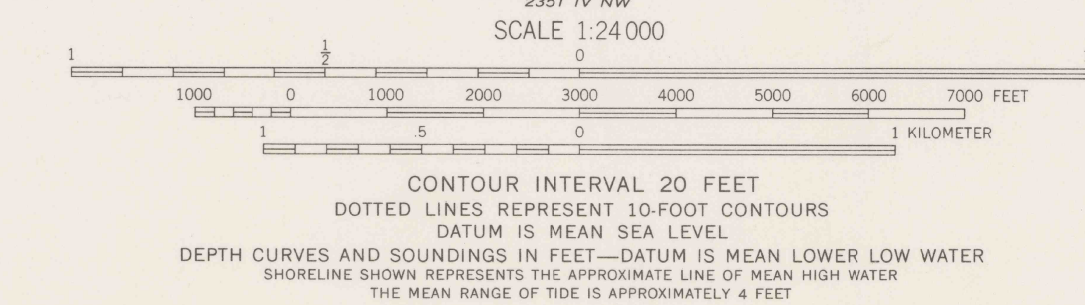
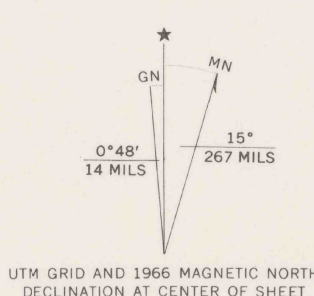
STATE OF CALIFORNIA
DEPARTMENT OF WATER RESOURCES

BEVERLY HILLS QUADRANGLE
CALIFORNIA—LOS ANGELES CO.
7.5 MINUTE SERIES (TOPOGRAPHIC)

1966 III 15
BURBANK



Mapped, edited, and published by the Geological Survey
Control by USGS, USC&GS, and Los Angeles City and County
Topography by photogrammetric methods from aerial
photographs taken 1964. Field checked 1966
Supersedes map surveyed 1923-24, revised 1950
Selected hydrographic data compiled from USC&GS Chart 5144 (1964)
This information is not intended for navigational purposes
Polyconic projection. 1927 North American datum
10,000-foot grid based on California coordinate system, zone 7
1000-meter Universal Transverse Mercator grid ticks,
zone 11, shown in blue
Red tint indicates areas in which only landmark buildings are shown
A portion of the south half of this map lies within a subsidence area
Vertical control based on latest available adjustment



THIS MAP COMPLIES WITH NATIONAL MAP ACCURACY STANDARDS
FOR SALE BY U.S. GEOLOGICAL SURVEY, DENVER, COLORADO 80225, OR WASHINGTON, D.C. 20242
A FOLDER DESCRIBING TOPOGRAPHIC MAPS AND SYMBOLS IS AVAILABLE ON REQUEST



DO NOT CIRCULATE REFERENCE
BEVERLY HILLS, CALIF.
N3400—W1822.5/7.5

1966
AMS 2352 III SW—SERIES V895

SPECIAL PRINTING
Contours and woodland symbols omitted

REF
3700
US
7.5
ed. 1966
rep. 1966 pp