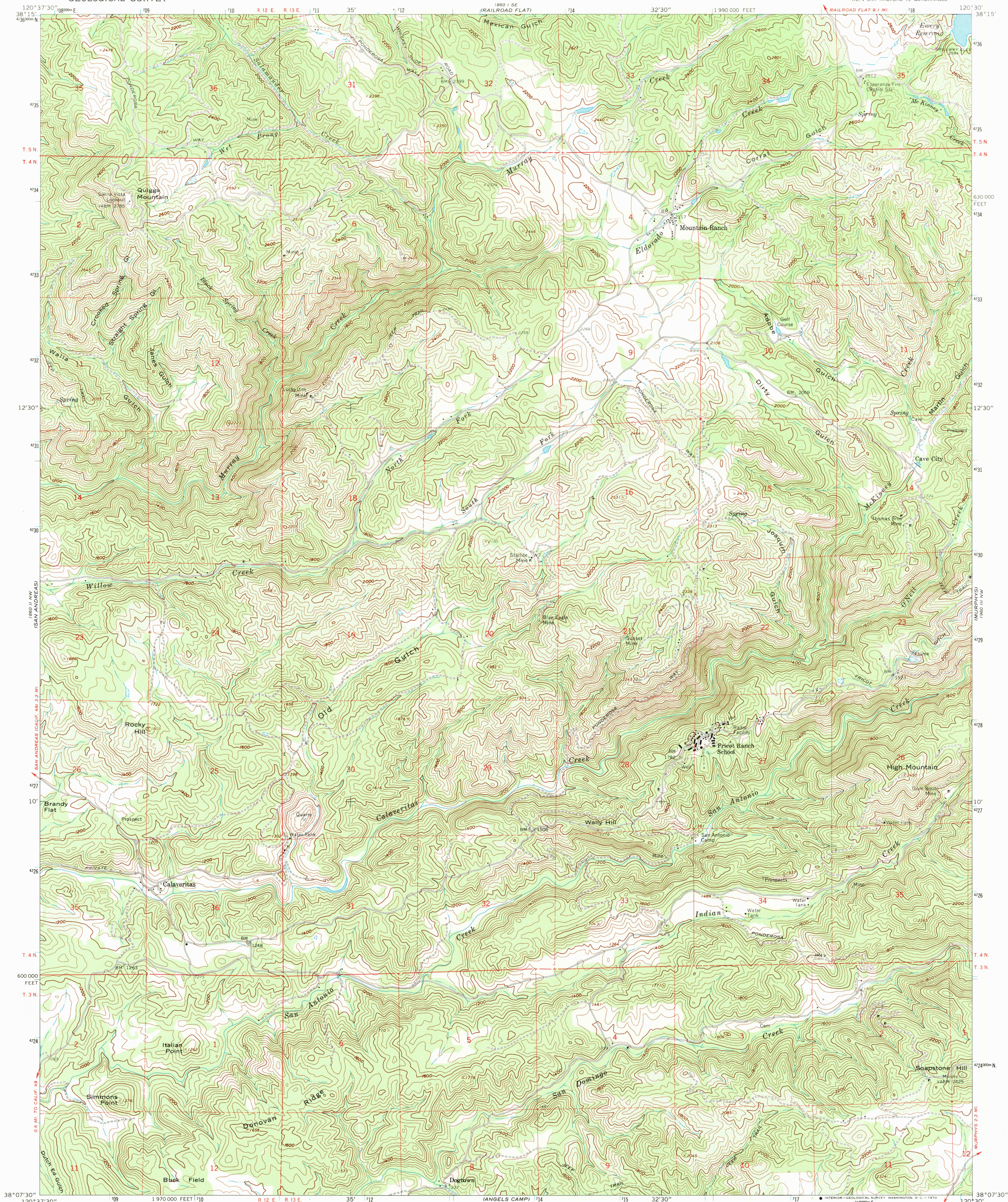


UNITED STATES
DEPARTMENT OF THE INTERIOR
GEOLOGICAL SURVEY

CALAVERITAS QUADRANGLE
CALIFORNIA-CALAVERAS CO.
7.5 MINUTE SERIES (TOPOGRAPHIC)
NE 1/4 SAN ANDREAS 15' QUADRANGLE



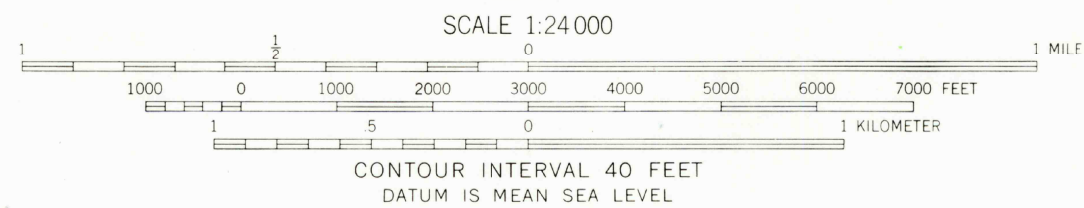
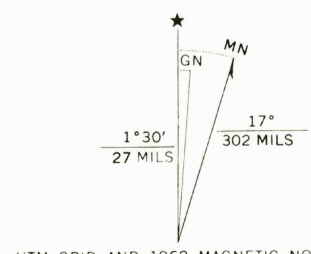
Mapped, edited, and published by the Geological Survey
in cooperation with California Department of Water Resources

Control by USGS and USC&GS

Topography by photogrammetric methods from aerial
photographs taken 1959. Field checked 1962

Polyconic projection. 1927 North American datum
10,000-foot grid based on California coordinate system, zone 3
1000-meter Universal Transverse Mercator grid ticks,
zone 10, shown in blue

Fine red dashed lines indicate selected fence lines



ROAD CLASSIFICATION
Light-duty ————— Unimproved dirt =====

CALAVERITAS, CALIF.
NE 1/4 SAN ANDREAS 15' QUADRANGLE
N3807.5-W12030/7.5

1962

AMS 1860 II NE-SERIES V895

THIS MAP COMPLIES WITH NATIONAL MAP ACCURACY STANDARDS
FOR SALE BY U. S. GEOLOGICAL SURVEY, DENVER, COLORADO 80225, OR RESTON, VIRGINIA 22092
A FOLDER DESCRIBING TOPOGRAPHIC MAPS AND SYMBOLS IS AVAILABLE ON REQUEST