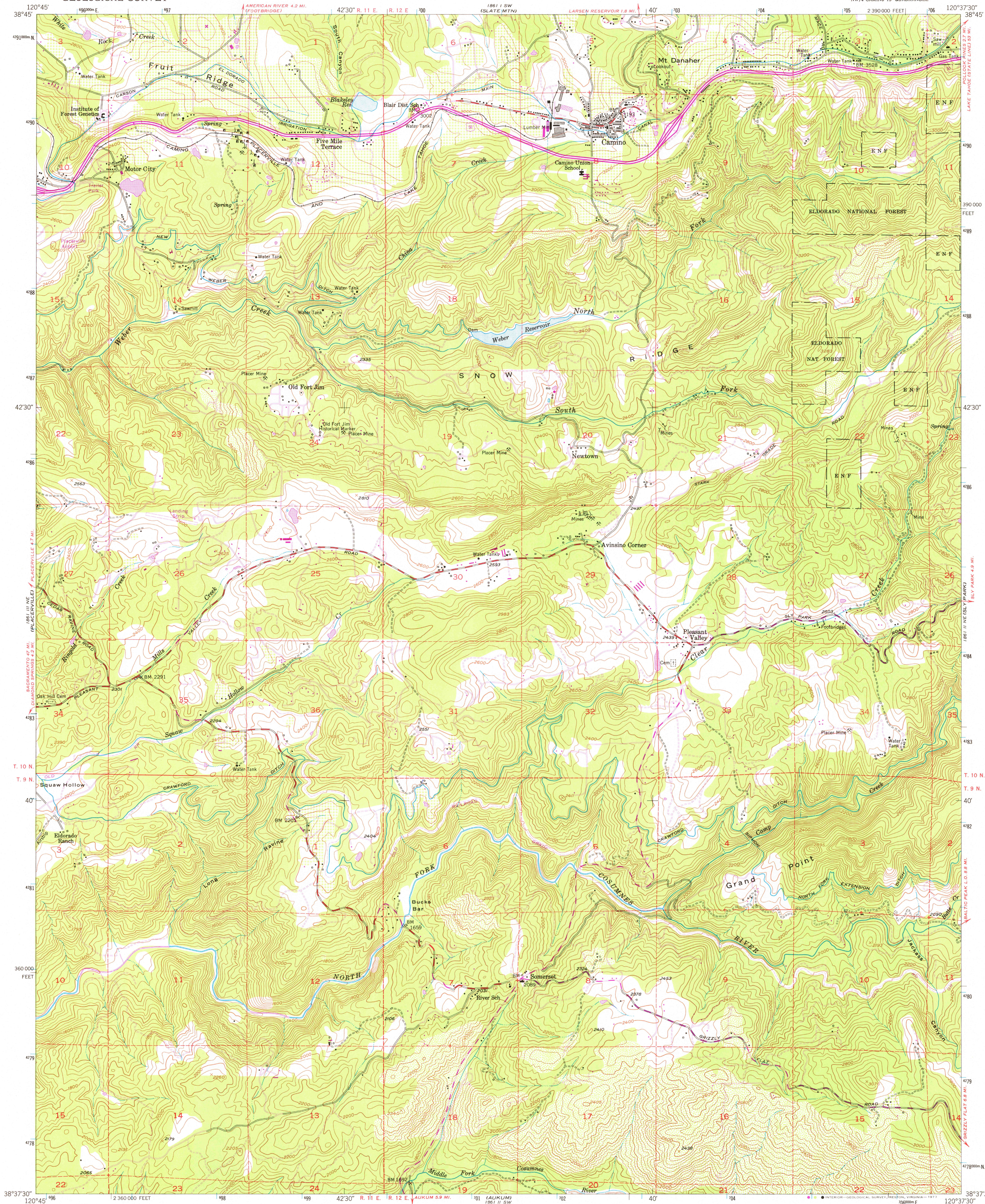


UNITED STATES  
DEPARTMENT OF THE INTERIOR  
GEOLOGICAL SURVEY

CAMINO QUADRANGLE  
CALIFORNIA—EL DORADO CO.  
7.5 MINUTE SERIES (TOPOGRAPHIC)  
NW 1/4 CAMINO 15' QUADRANGLE



Mapped, edited, and published by the Geological Survey  
Control by USGS and USC&GS

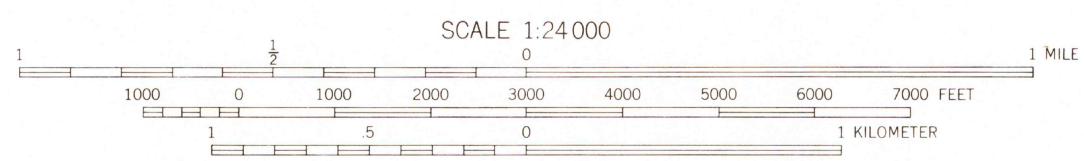
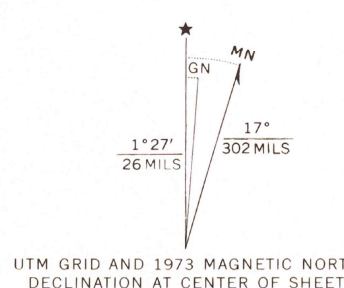
Topography from aerial photographs by multiplex methods  
Aerial photographs taken 1948. Field check 1952

Polycyclic projection. 1927 North American datum  
10,000-foot grid based on California coordinate system, zone 2  
1000-meter Universal Transverse Mercator grid ticks,  
zone 10, shown in blue

Dashed land lines indicate approximate locations

Unchecked elevations are shown in brown

Revisions shown in purple compiled from aerial photographs  
taken 1973. This information not field checked



THIS MAP COMPLIES WITH NATIONAL MAP ACCURACY STANDARDS  
FOR SALE BY U.S. GEOLOGICAL SURVEY, DENVER, COLORADO 80225, OR RESTON, VIRGINIA 22092  
A FOLDER DESCRIBING TOPOGRAPHIC MAPS AND SYMBOLS IS AVAILABLE ON REQUEST



ROAD CLASSIFICATION  
Heavy-duty ——— Light-duty ———  
Medium-duty ——— Unimproved dirt ———  
U.S. Route

USGS  
Historical File  
Topographic Division

CAMINO, CALIF.  
NW 1/4 CAMINO 15' QUADRANGLE  
N3837.5—W12037.5/7.5

1952  
PHOTOREVISED 1973  
AMS 1861 II NW—SERIES V895

SEP 23 1977