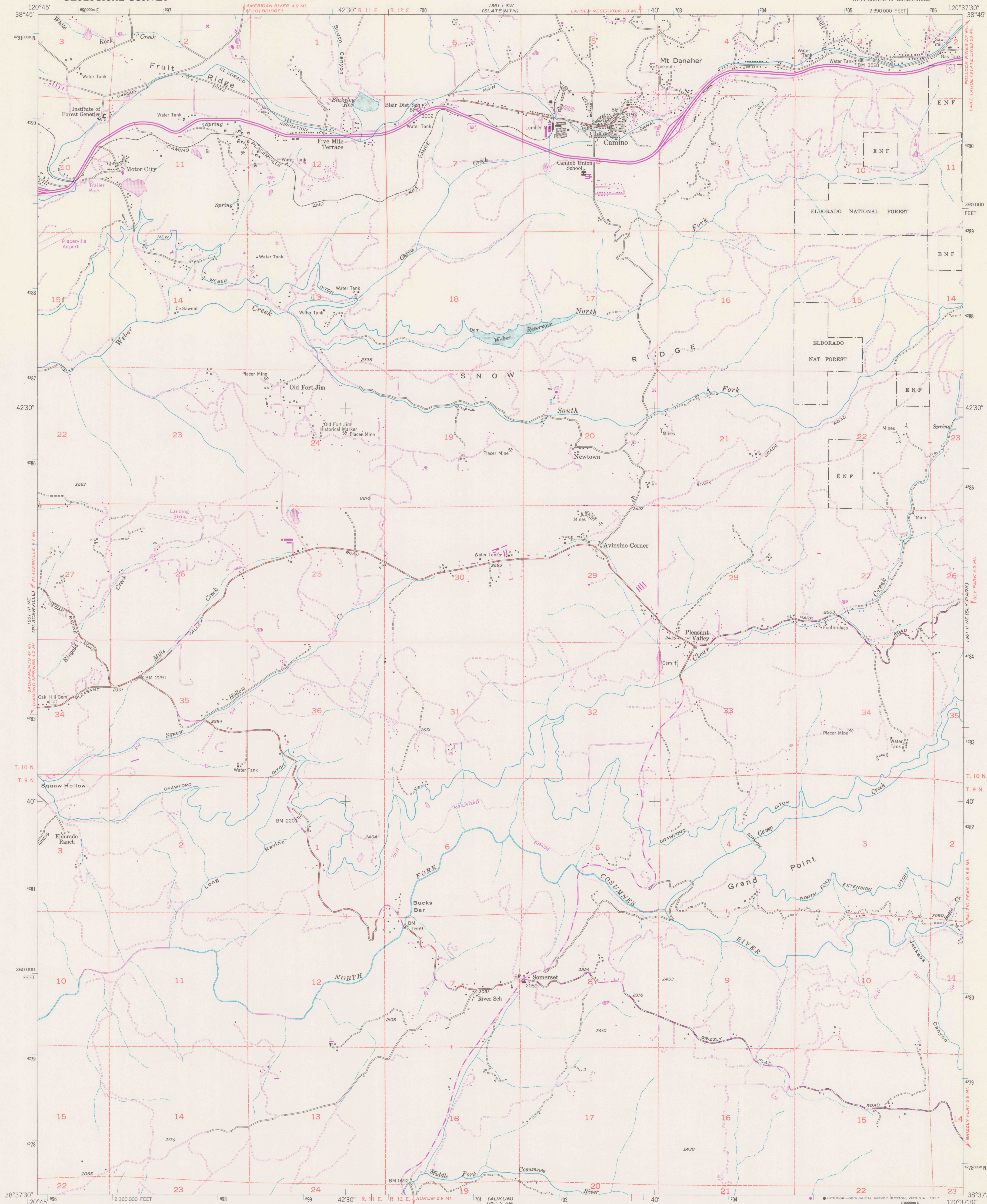
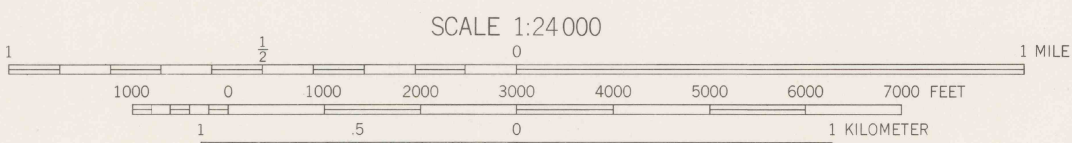
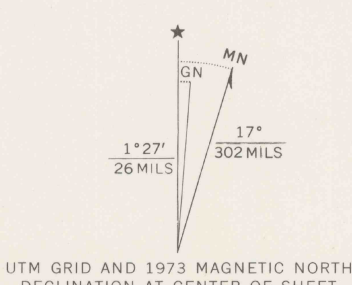


UNITED STATES
DEPARTMENT OF THE INTERIOR
GEOLOGICAL SURVEY

CAMINO QUADRANGLE
CALIFORNIA-EL DORADO CO.
7.5 MINUTE SERIES (TOPOGRAPHIC)
NW 1/4 CAMINO 15' QUADRANGLE



Mapped, edited, and published by the Geological Survey
Control by USGS and USC&GS
Topography from aerial photographs by multiplex methods
Aerial photographs taken 1948. Field check 1952
Polyconic projection. 1927 North American datum
10,000-foot grid based on California coordinate system, zone 2
1000-meter Universal Transverse Mercator grid ticks,
zone 10, shown in blue
Dashed land lines indicate approximate locations
Unchecked elevations are shown in brown
Revisions shown in purple compiled from aerial photographs
taken 1973. This information not field checked



CONTOUR INTERVAL 40 FEET
NATIONAL GEODETIC VERTICAL DATUM OF 1929

THIS MAP COMPLIES WITH NATIONAL MAP ACCURACY STANDARDS
FOR SALE BY U. S. GEOLOGICAL SURVEY, DENVER, COLORADO 80225, OR RESTON, VIRGINIA 22092
A FOLDER DESCRIBING TOPOGRAPHIC MAPS AND SYMBOLS IS AVAILABLE ON REQUEST



QUADRANGLE LOCATION

ROAD CLASSIFICATION
Heavy-duty ——— Light-duty ———
Medium-duty ——— Unimproved dirt ———
U. S. Route

CAMINO, CALIF.
NW 1/4 CAMINO 15' QUADRANGLE
N3837.5—W12037.5/7.5
1952
PHOTO-REVISED 1973
AMS 1861 II NW—SERIES V895

REFERENCE

REFERENCE

3700a
Vas
U5
7.5
ed. 1973
rep. 1977 pp
C.1