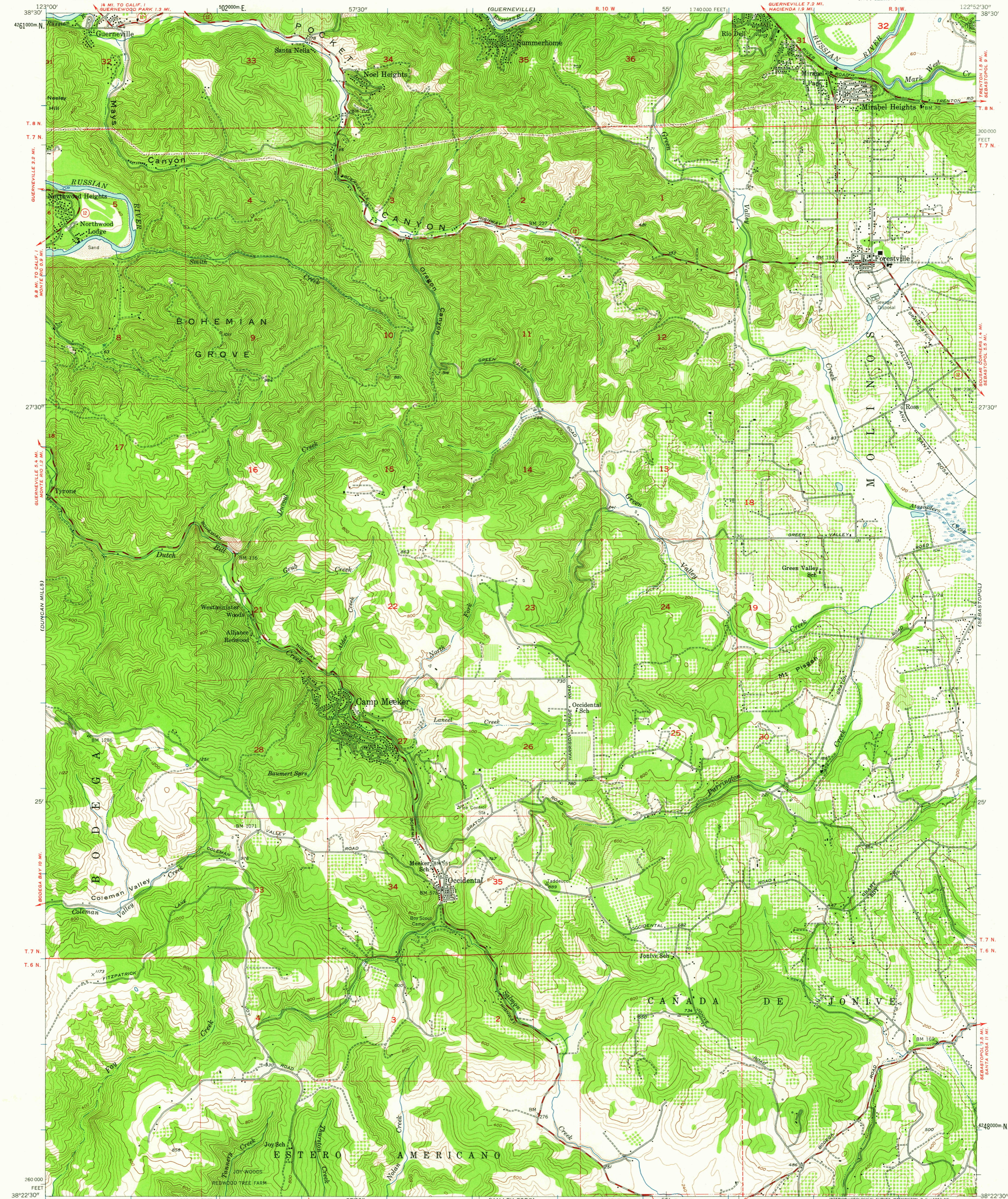


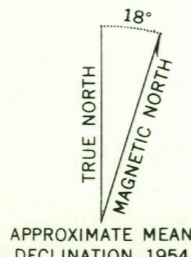
UNITED STATES  
DEPARTMENT OF THE INTERIOR  
GEOLOGICAL SURVEY

CAMP MEEKER QUADRANGLE  
CALIFORNIA—SONOMA CO.  
7.5 MINUTE SERIES (TOPOGRAPHIC)  
NW 1/4 SEBASTOPOL 15' QUADRANGLE

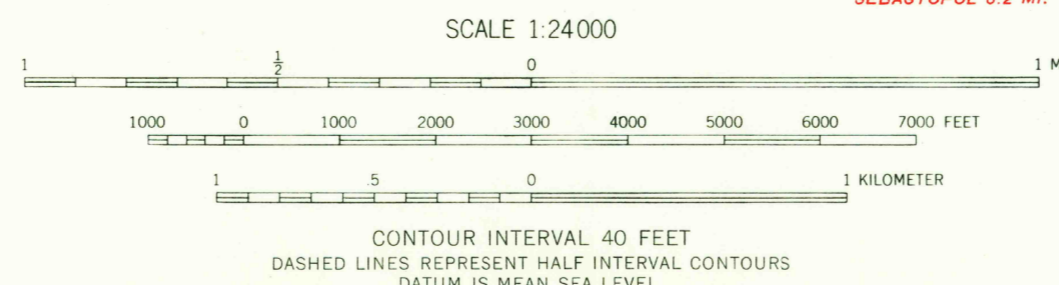


Mapped, edited, and published by the Geological Survey

Control by USGS and USC&GS  
Topography from aerial photographs by multiplex methods  
Aerial photographs taken 1952. Field check 1954  
Polyconic projection, 1927 North American datum  
10,000-foot grid based on California coordinate system, zone 2  
Dashed land lines indicate approximate locations  
Unchecked elevations are shown in brown  
1000-meter Universal Transverse Mercator grid ticks,  
zone 10, shown in blue



APPROXIMATE MEAN  
DECLINATION, 1954



USGS  
Historical File  
Topographic Division

ROAD CLASSIFICATION  
Medium-duty ——— Light-duty ———  
Unimproved dirt ———  
Slate Route (circle with cross)



QUADRANGLE LOCATION

THIS MAP COMPLIES WITH NATIONAL MAP ACCURACY STANDARDS  
FOR SALE BY U. S. GEOLOGICAL SURVEY, DENVER 25, COLORADO OR WASHINGTON 25, D. C.  
A FOLDER DESCRIBING TOPOGRAPHIC MAPS AND SYMBOLS IS AVAILABLE ON REQUEST

CAMP MEEKER, CALIF.  
NW 1/4 SEBASTOPOL 15' QUADRANGLE  
N 3822.5—W 12252.5/7.5

1954

SEP 25 1962

4975