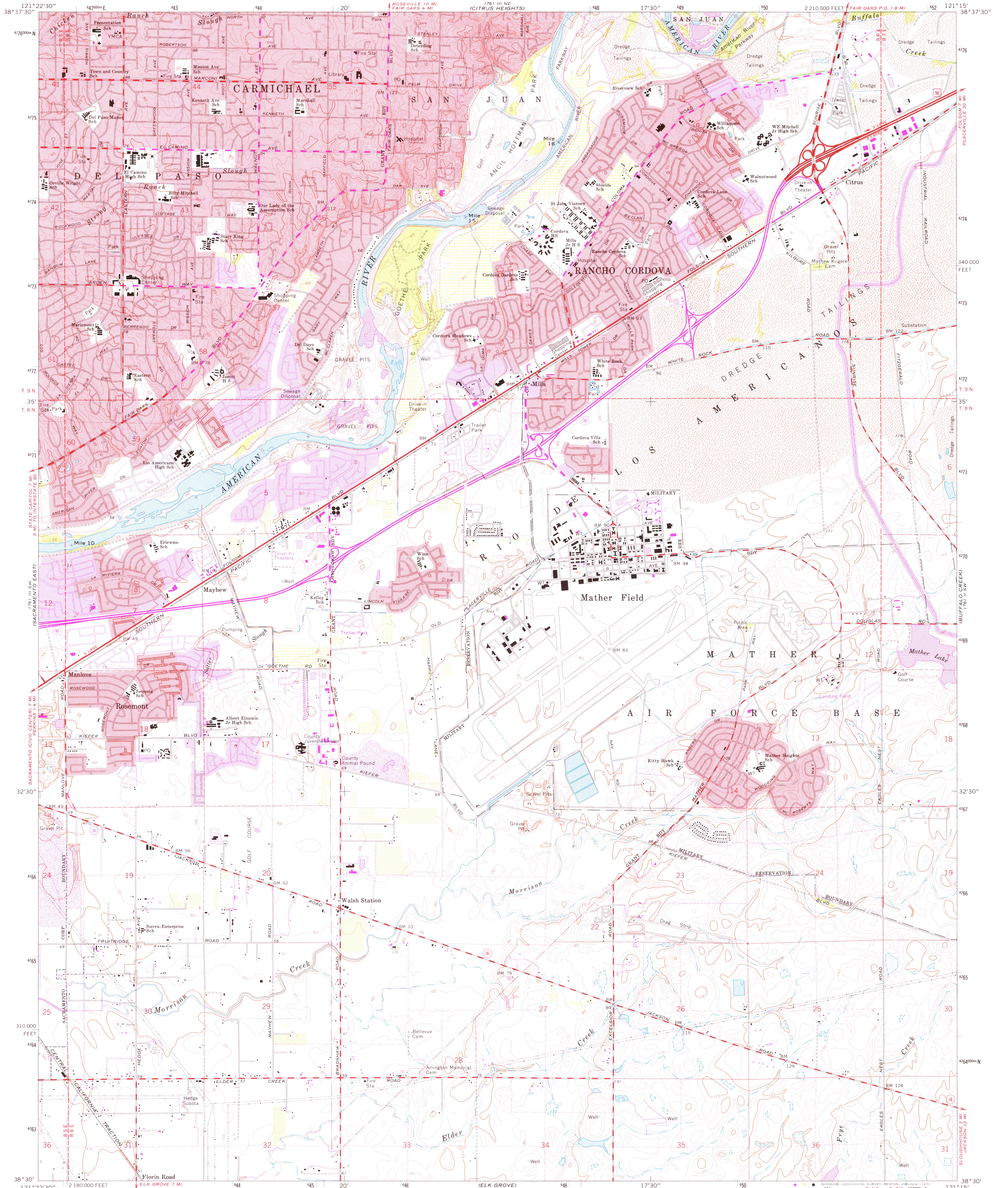


UNITED STATES  
DEPARTMENT OF THE INTERIOR  
GEOLOGICAL SURVEY

CARMICHAEL QUADRANGLE  
CALIFORNIA—SACRAMENTO CO.  
7.5 MINUTE SERIES (TOPOGRAPHIC)  
SE/4 FAIR OAKS 15' QUADRANGLE



Mapped, edited, and published by the Geological Survey  
in cooperation with California Department of Water Resources

Control by USGS and USC&GS

Planimetry by photogrammetric methods from aerial photographs  
taken 1947. Topography by planimetric surveys 1948-49. Revised  
from aerial photographs taken 1966. Field checked 1967

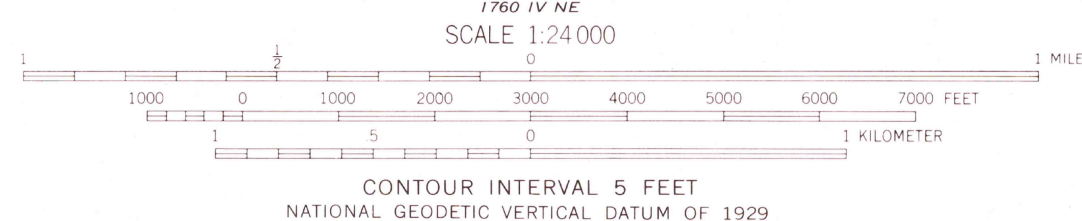
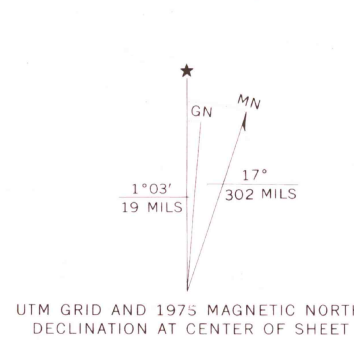
Polyconic projection. 1927 North American datum  
10,000-foot grid based on California coordinate system, zone 2  
1000-meter Universal Transverse Mercator grid ticks,  
zone 10, shown in blue

Red tint indicates areas in which only landmark buildings are shown

Fine red dashed lines indicate selected fence lines

Land grant boundaries which follow the banks of the  
American River are not shown

Dotted land lines established by private survey



THIS MAP COMPLIES WITH NATIONAL MAP ACCURACY STANDARDS  
FOR SALE BY U. S. GEOLOGICAL SURVEY, DENVER, COLORADO 80225, OR RESTON, VIRGINIA 22092  
A FOLDER DESCRIBING TOPOGRAPHIC MAPS AND SYMBOLS IS AVAILABLE ON REQUEST

ROAD CLASSIFICATION

Heavy-duty ——— Light-duty ———  
Medium-duty ——— Unimproved dirt ———

U. S. Route ——— State Route ———

USGS  
Historical File  
Topographic Division

CARMICHAEL, CALIF.  
SE/4 FAIR OAKS 15' QUADRANGLE  
N3830—W12115/7.5

1967  
PHOTO-REVISED 1975  
AMS 1761 III SE—SERIES V895

7250  
SEP 22 1977