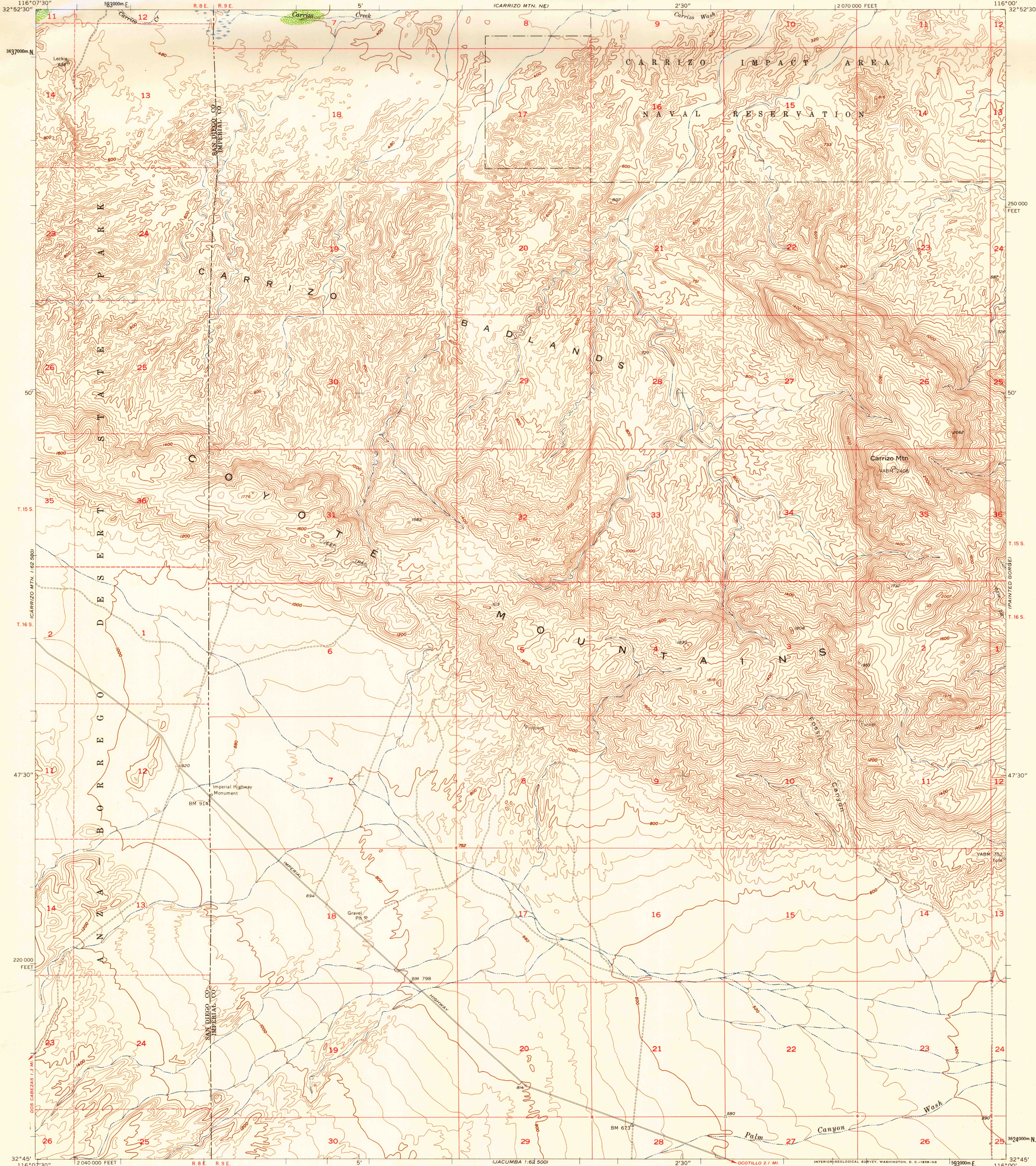


(CARRIZO MTN.)
1:62,500

UNITED STATES
DEPARTMENT OF THE INTERIOR
GEOLOGICAL SURVEY

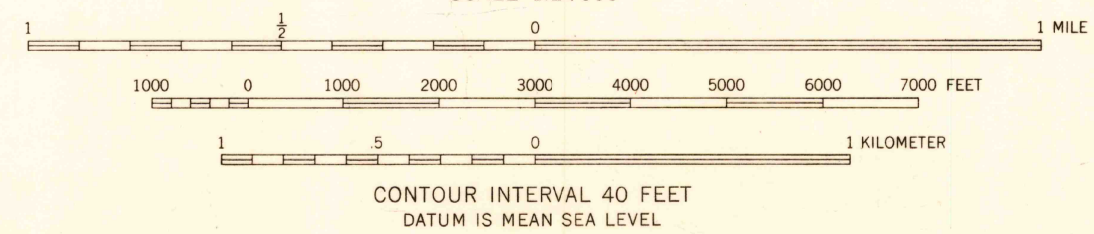
CARRIZO MTN. QUADRANGLE
CALIFORNIA
7.5 MINUTE SERIES (TOPOGRAPHIC)
SE 1/4 CARRIZO MTN. 15' QUADRANGLE

(PLASTER CITY NW)



Mapped, edited, and published by the Geological Survey
Control by USGS, USC&GS, and USCE
Topography from aerial photographs by ER-55 plotter
Aerial photographs taken 1956. Advance field check 1957
Polyconic projection. 1927 North American datum
10,000-foot grid based on California coordinate system,
zone 6
1000-meter Universal Transverse Mercator grid ticks,
zone 11, shown in blue
Dashed land lines indicate approximate locations
Unchecked elevations are shown in brown

TRUE NORTH
MAGNETIC NORTH
APPROXIMATE MEAN
DECLINATION, 1957



USGS
Historical File
Topographic Division

U.S.G.S.
FILE COPY
TOPOGRAPHIC DIVISION

ROAD CLASSIFICATION

CARRIZO MTN., CALIF.
SE 1/4 CARRIZO MTN. 15' QUADRANGLE
N3245-W11600/7.5

1957

JUL 23 1959

6235