

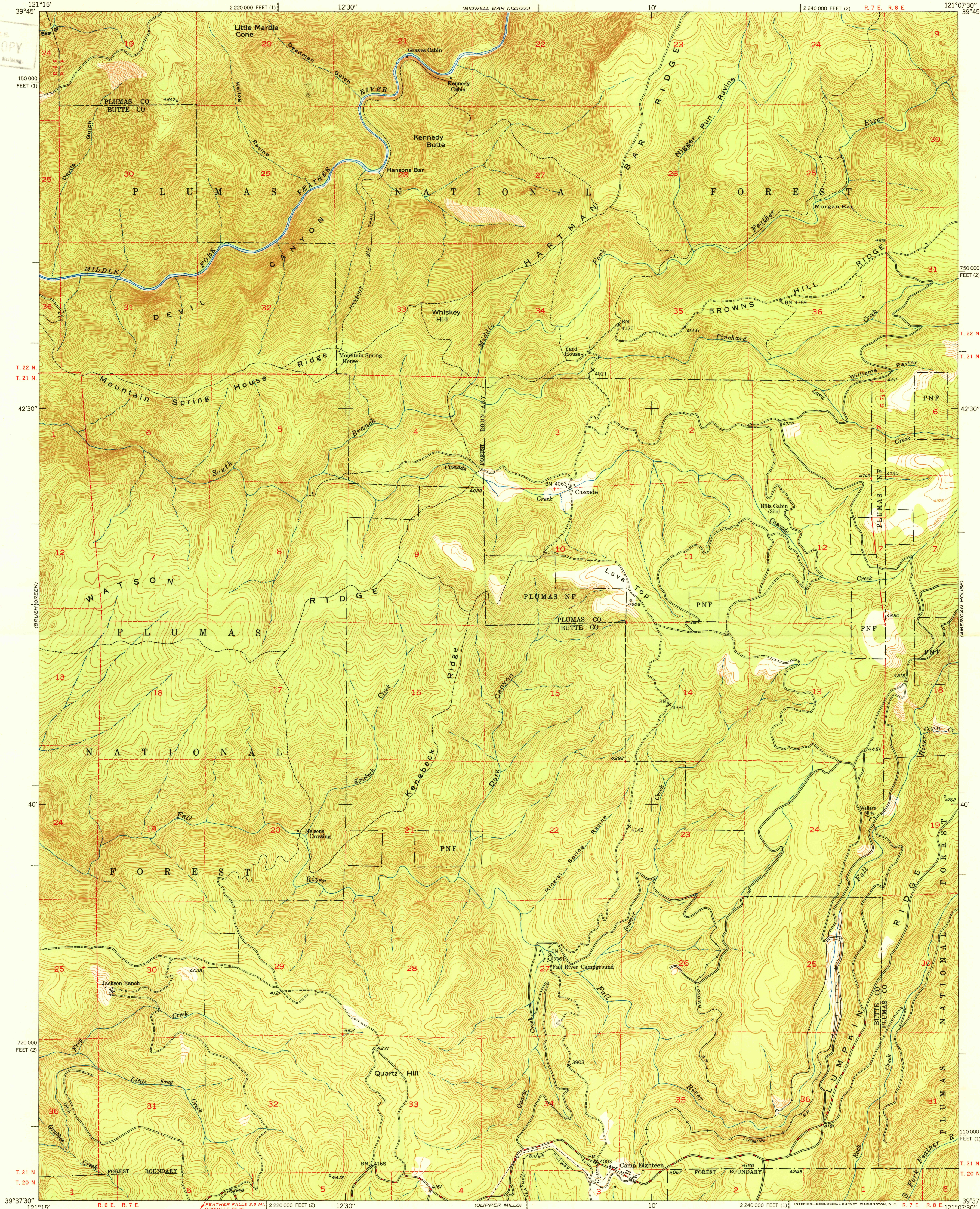
UNITED STATES  
DEPARTMENT OF THE INTERIOR  
GEOLOGICAL SURVEY

BUREAU OF RECLAMATION

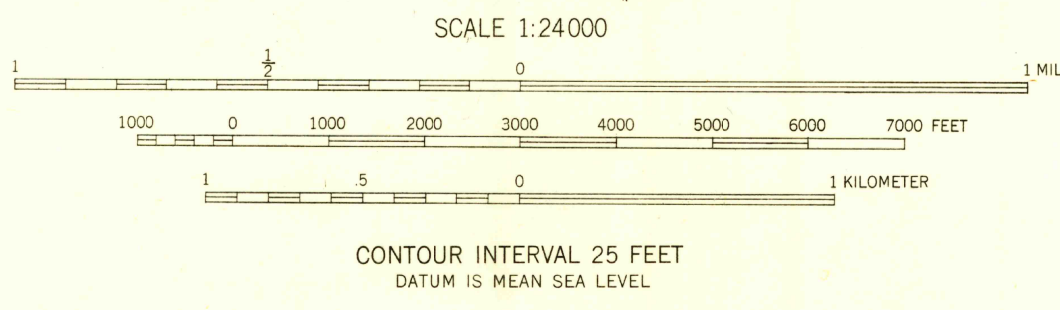
STATE OF CALIFORNIA  
EARL WARREN, GOVERNOR  
C. H. PURCELL, DIRECTOR OF PUBLIC WORKS  
A. D. EDMONSTON, STATE ENGINEER

CASCADE QUADRANGLE  
CALIFORNIA  
7.5 MINUTE SERIES (TOPOGRAPHIC)

U.S.G.S.  
FILE COPY  
Inspection and Editing



Mapped by Fairchild Aerial Surveys, Inc.  
Field inspected, edited, and published by the Geological Survey  
Control by Fairchild Aerial Surveys, Inc. and USGS.  
Topography from aerial photographs by stereoplano-graph methods  
Aerial photographs taken 1946-1947. Field check 1948  
Polyconic projection. 1927 North American datum  
10,000-foot grids based on California coordinate system,  
zones 1 and 2  
Dashed land lines indicate approximate location.  
Fairchild triangulation shown by unlabeled located object symbol



ROAD CLASSIFICATION  
HARD-SURFACE ALL WEATHER ROADS DRY WEATHER ROADS  
Heavy-duty ———— 4 LANE 1 LANE Improved dirt ————  
Medium-duty ———— 4 LANE 1 LANE Unimproved dirt ————  
Loose-surface, graded, or narrow hard-surface ————  
U. S. Route State Route

USGS  
Historical File  
Topographic Division  
U.S.G.S.  
FILE COPY  
Inspection and Editing

CASCADE, CALIF.  
N3937.5-W12107.5/7.5  
EDITION OF 1950

FOR SALE BY U. S. GEOLOGICAL SURVEY, FEDERAL CENTER, DENVER, COLORADO OR WASHINGTON 25, D. C.  
A FOLDER DESCRIBING TOPOGRAPHIC MAPS AND SYMBOLS IS AVAILABLE ON REQUEST