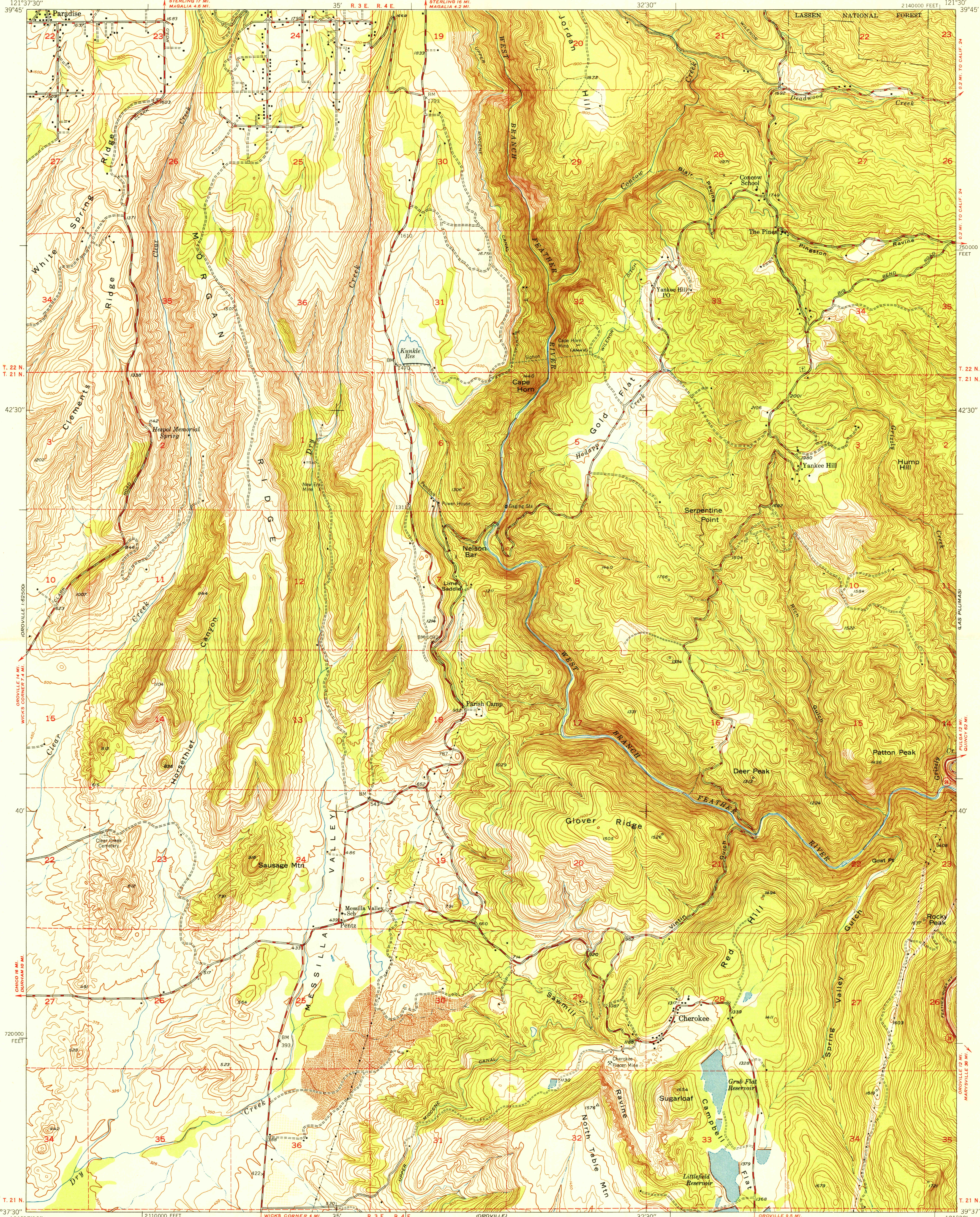


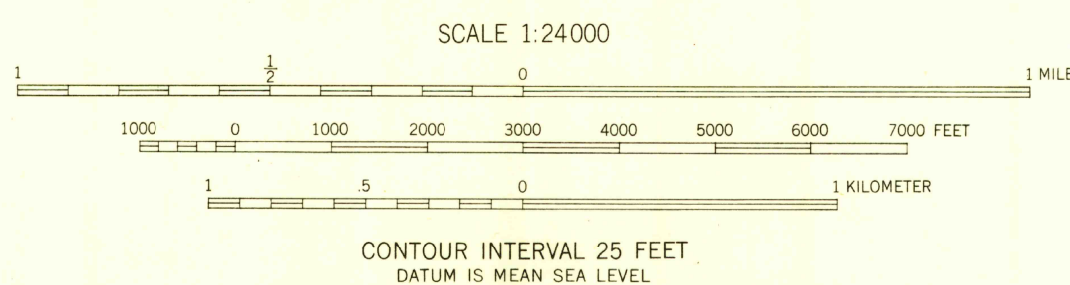
U. S. G. S.
FILE COPY
Inspection and Editing

U. S. G. S.
FILE COPY
Inspection and Editing



Mapped by Fairchild Aerial Surveys, Inc.
Field inspected, edited, and published by the Geological Survey
Control by Fairchild Aerial Surveys, Inc.,
USGS, and USC&GS
Topography from aerial photographs by stereoplano-graph methods
Aerial photographs taken 1946-1947. Field check 1947
Polyconic projection. 1927 North American datum
10,000-foot grid based on California coordinate system,
zone 2
Dashed land lines indicate approximate location
Fairchild triangulation shown by unlabeled located object symbol

TRUE NORTH
MAGNETIC NORTH
APPROXIMATE MEAN
DECLINATION, 1947



USGS
Historical File
Topographic Division

ROAD CLASSIFICATION
HARD-SURFACE ALL WEATHER ROADS DRY WEATHER ROADS
Heavy-duty... **LANE LANE** Improved dirt...
Medium-duty... **LANE LANE** Unimproved dirt...
Loose-surface, graded, or narrow hard-surface...
U. S. Route State Route

U. S. G. S.
FILE COPY
Inspection and Editing

CHEROKEE, CALIF.
N3937.5-W12130.7.5
PRINTED 1949