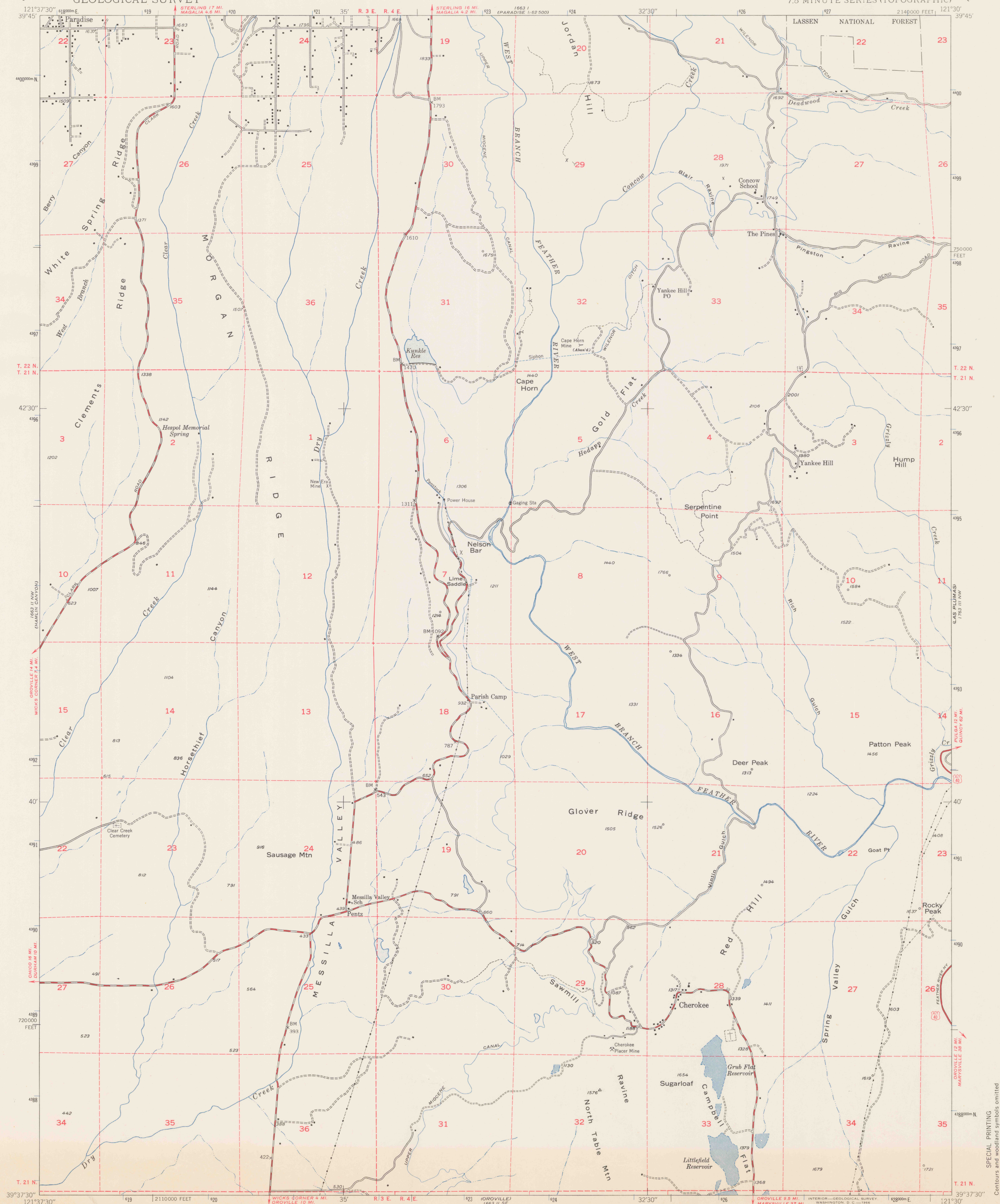


UNITED STATES
DEPARTMENT OF THE INTERIOR
GEOLOGICAL SURVEY

BUREAU OF RECLAMATION

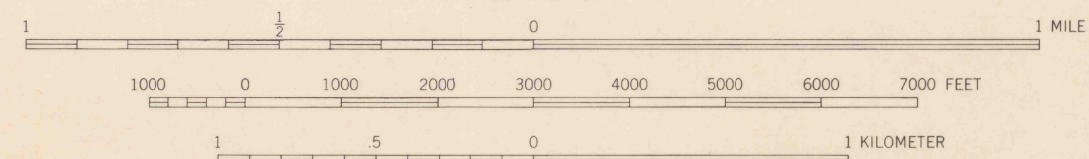
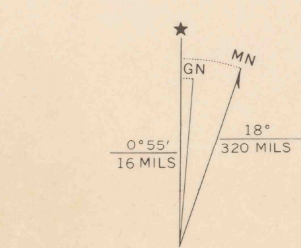
STATE OF CALIFORNIA
REPRESENTED BY THE
DIRECTOR OF PUBLIC WORKS

CHEROKEE QUADRANGLE
CALIFORNIA-BUTTE CO.
7.5 MINUTE SERIES (TOPOGRAPHIC)



Mapped by Fairchild Aerial Surveys, Inc.
Field inspected, edited, and published by the Geological Survey
Control by Fairchild Aerial Surveys, Inc.,
USGS, and USC&GS

Topography from aerial photographs by stereoplano-graph methods
Aerial photographs taken 1946-1947. Field check 1947
Polyconic projection. 1927 North American datum
10,000-foot grid based on California coordinate system,
zone 2
1000-meter Universal Transverse Mercator grid ticks,
zone 10, shown in blue
Dashed land lines indicate approximate location
Fairchild triangulation shown by unlabeled located object symbol



CONTOUR INTERVAL 25 FEET
DATUM IS MEAN SEA LEVEL

FOR SALE BY U. S. GEOLOGICAL SURVEY, DENVER, COLORADO 80225 OR WASHINGTON, D. C. 20242
A FOLDER DESCRIBING TOPOGRAPHIC MAPS AND SYMBOLS IS AVAILABLE ON REQUEST

ROAD CLASSIFICATION
Heavy-duty ——— Light-duty ———
Medium-duty ——— Unimproved dirt ———
U.S. Route ———



CHEROKEE, CALIF.
N3937.5-W121307.5
1947

AMS 1663 II NE-SERIES B95

DO NOT CIRCULATE

SPECIAL PRINTING
Contours and woodland symbols omitted

REFERENCE
REF
3700s
Var
U5
7.5
ed. 1947
rep. 1966 pp