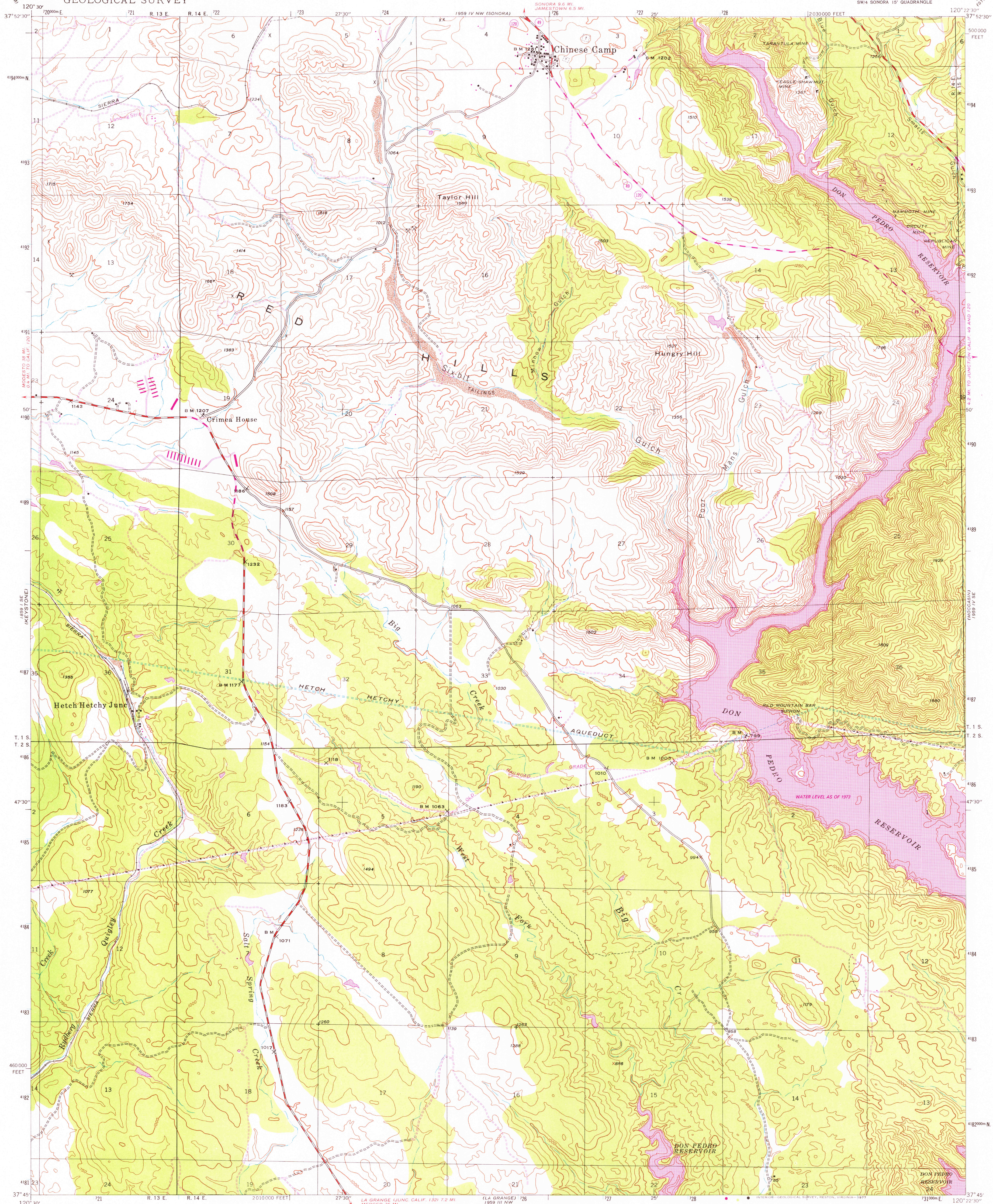


UNITED STATES  
DEPARTMENT OF THE INTERIOR  
GEOLOGICAL SURVEY

CHINESE CAMP QUADRANGLE  
CALIFORNIA—TUOLUMNE CO.  
7.5 MINUTE SERIES (TOPOGRAPHIC)  
SW/4 SONORA 15' QUADRANGLE



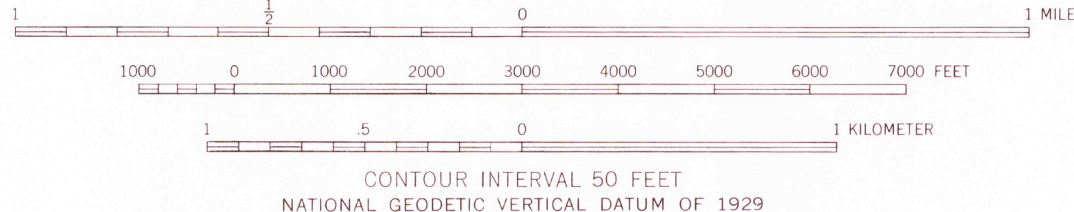
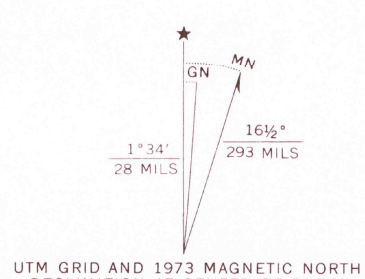
Mapped, edited, and published by the Geological Survey

Control by USGS and USC&GS

Topography by photogrammetric methods from aerial photographs taken 1945. Field checked 1947

Polyconic projection. 1927 North American datum  
10,000-foot grid based on California coordinate system, zone 3  
1000-meter Universal Transverse Mercator grid ticks,  
zone 10, shown in blue

Revisions shown in purple compiled from aerial photographs  
taken 1973. This information not field checked



FOR SALE BY U. S. GEOLOGICAL SURVEY, DENVER, COLORADO 80225, OR RESTON, VIRGINIA 22092  
A FOLDER DESCRIBING TOPOGRAPHIC MAPS AND SYMBOLS IS AVAILABLE ON REQUEST



ROAD CLASSIFICATION  
Secondary highway, all weather, Light-duty road, all weather,  
hard surface  
Unimproved road, fair or dry  
weather  
State Route

CHINESE CAMP, CALIF.  
SW/4 SONORA 15' QUADRANGLE  
N3745—W12022.5/7.5

USGS  
Historical File  
Topographic Division

1947  
PHOTOREVISED 1973  
AMS 1959 IV SW—SERIES V895

JUN 10 1977  
5000