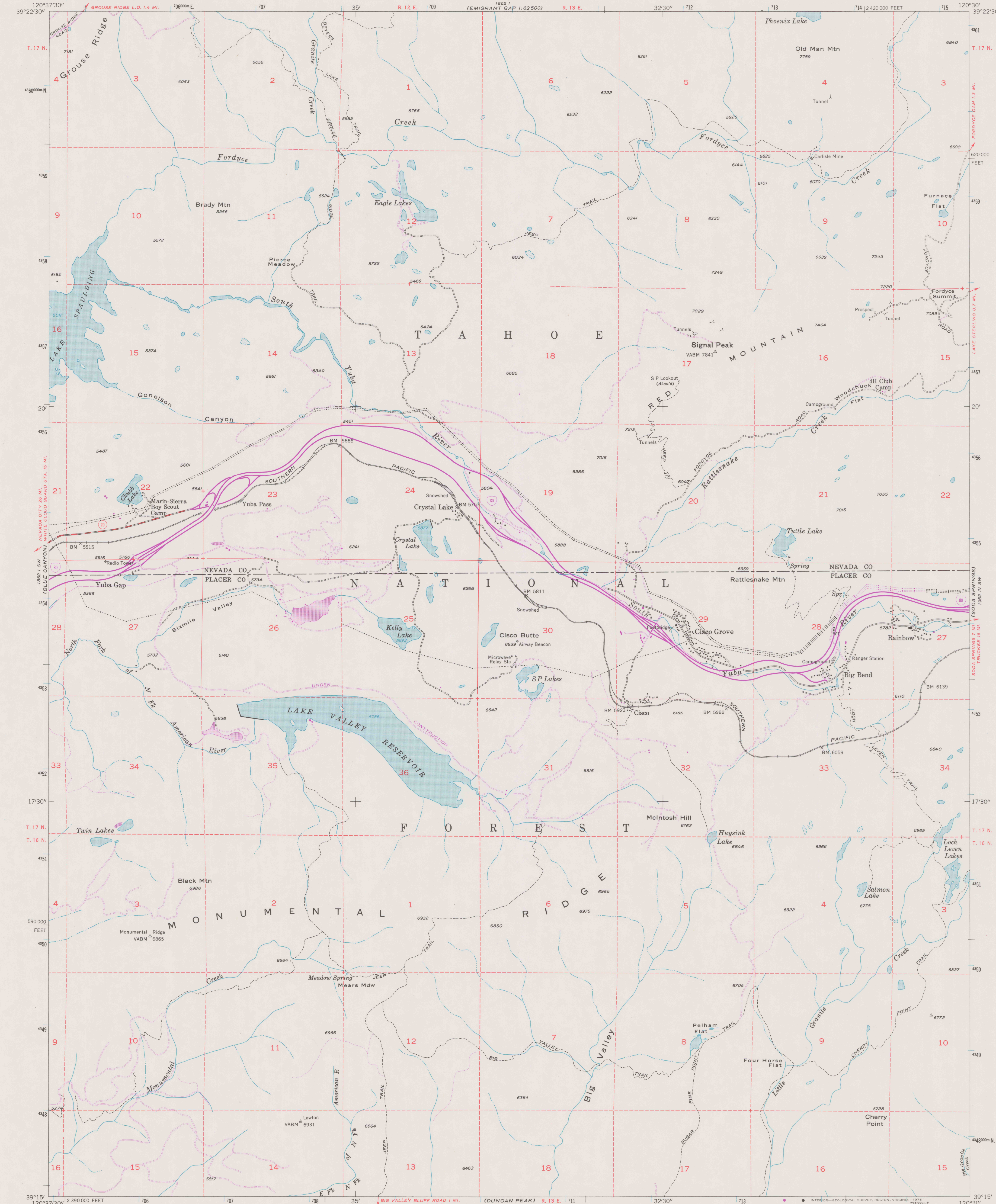


UNITED STATES
DEPARTMENT OF THE INTERIOR
GEOLOGICAL SURVEY

STATE OF CALIFORNIA
DIRECTOR OF PUBLIC WORKS

CISCO GROVE QUADRANGLE
CALIFORNIA
7.5 MINUTE SERIES (TOPOGRAPHIC)
SE/4 EMIGRANT GAP 15' QUADRANGLE



Mapped, edited, and published by the Geological Survey

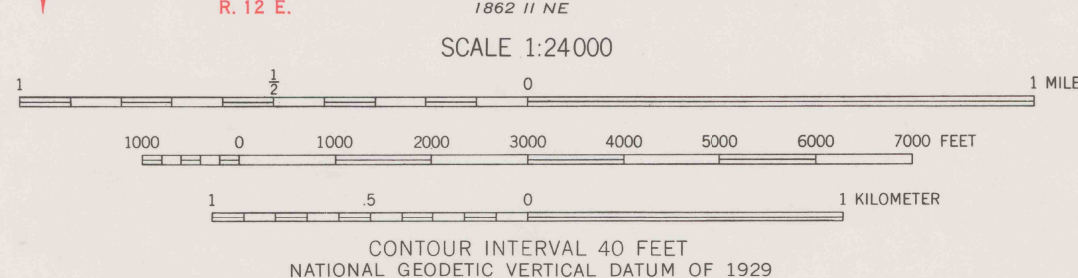
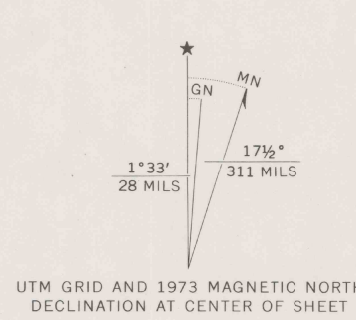
Control by USGS and USC&GS

Topography from aerial photographs by multiplex methods
Aerial photographs taken 1953. Field check 1955

Polyconic projection, 1927 North American datum
10,000-foot grid based on California coordinate system, zone 2
1000-meter Universal Transverse Mercator grid ticks,
zone 10, shown in blue

Dashed land lines indicate approximate locations

Revisions shown in purple compiled from aerial photographs
taken 1973. This information not field checked



THIS MAP COMPLIES WITH NATIONAL MAP ACCURACY STANDARDS
FOR SALE BY U.S. GEOLOGICAL SURVEY, DENVER, COLORADO 80225, OR RESTON, VIRGINIA 22092
A FOLDER DESCRIBING TOPOGRAPHIC MAPS AND SYMBOLS IS AVAILABLE ON REQUEST



ROAD CLASSIFICATION	
Heavy-duty	Light-duty
Medium-duty	Unimproved dirt
Interstate Route	State Route

CISCO GROVE, CALIF.
SE/4 EMIGRANT GAP 15' QUADRANGLE
N 3915-W 12030/7.5

1955
PHOTOREVISED 1973
AMS 1862 I SE-SERIES V895

REFERENCE

REF
37(1)
Var
U5
7.5
ed. 1973
Rep. 1976

DO NOT CIRCULATE