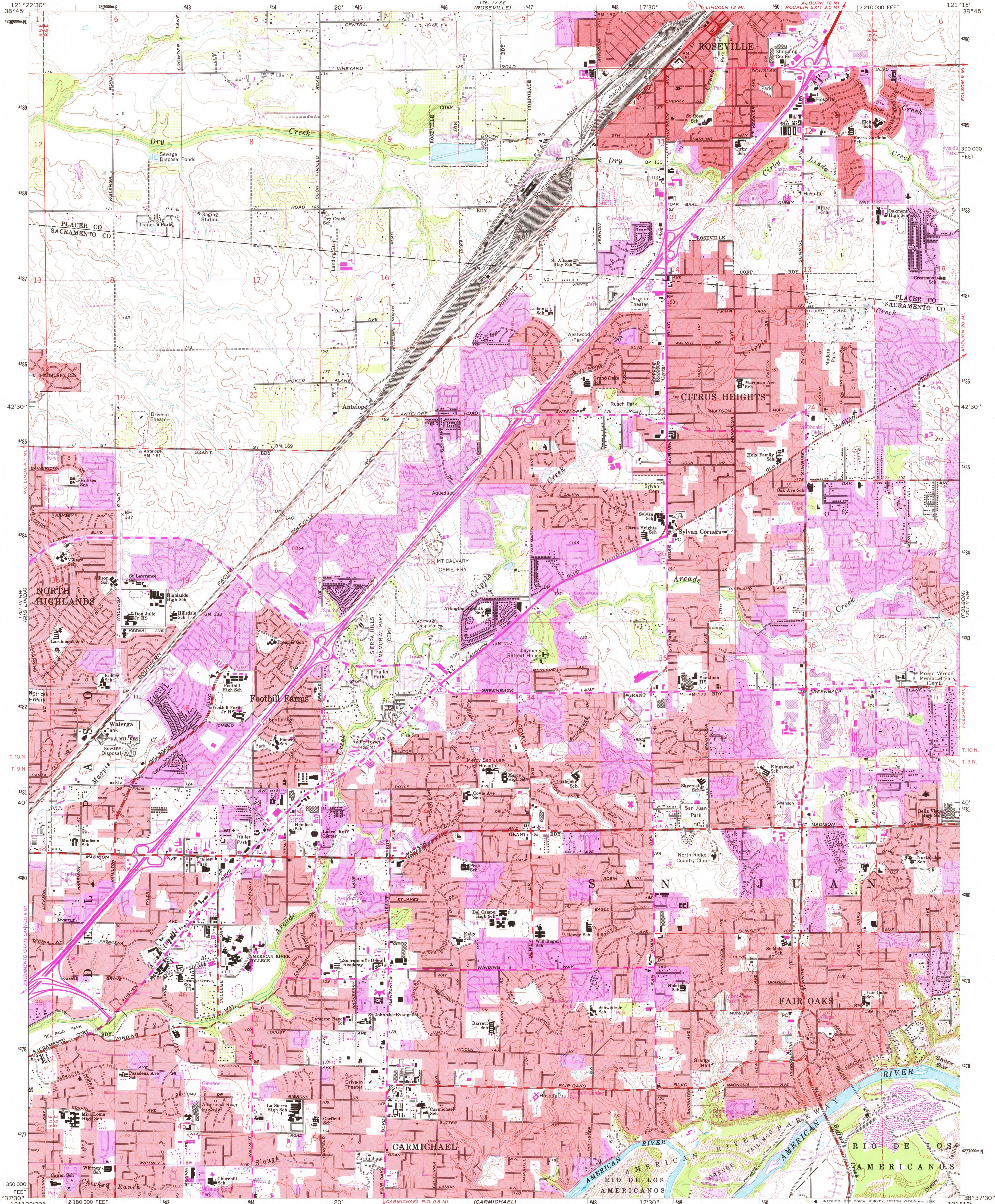
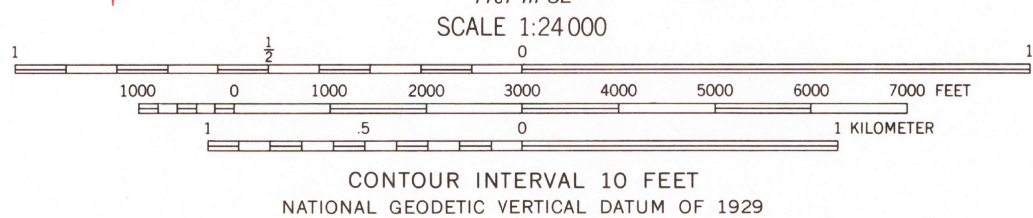


UNITED STATES
DEPARTMENT OF THE INTERIOR
GEOLOGICAL SURVEY

CITRUS HEIGHTS QUADRANGLE
CALIFORNIA
7.5 MINUTE SERIES (TOPOGRAPHIC)
NE/4 FAIR OAKS 15' QUADRANGLE



Mapped, edited, and published by the Geological Survey
in cooperation with California Department of Water Resources
Control by USGS and NOS/NOAA
Planimetry by photogrammetric methods from aerial photographs
taken 1947. Topography by planetable surveys 1951. Revised
from aerial photographs taken 1966. Field checked 1967
Polyconic projection. 1927 North American datum
10,000-foot grid based on California coordinate system, zone 2
1000-meter Universal Transverse Mercator grid ticks,
zone 10, shown in blue
To place on the predicted North American Datum 1983
move the projection lines 14 meters north and
92 meters east as shown by dashed corner ticks
Land grant boundaries which follow the banks of
the American River are not shown
Dotted land lines established by private survey
Red tint indicates areas in which only landmark buildings are shown



ROAD CLASSIFICATION
Heavy-duty ———— Light-duty ————
Medium-duty ———— Unimproved dirt ————
USGS Historical File Topographic Division
Interstate Route ———— State Route ————
CITRUS HEIGHTS, CALIF.
NE/4 FAIR OAKS 15' QUADRANGLE
N3837.5—W12115/7.5
1967
PHOTOREVISED 1980
DMA 1761 III NE—SERIES V895

SEP 24 1980
2291