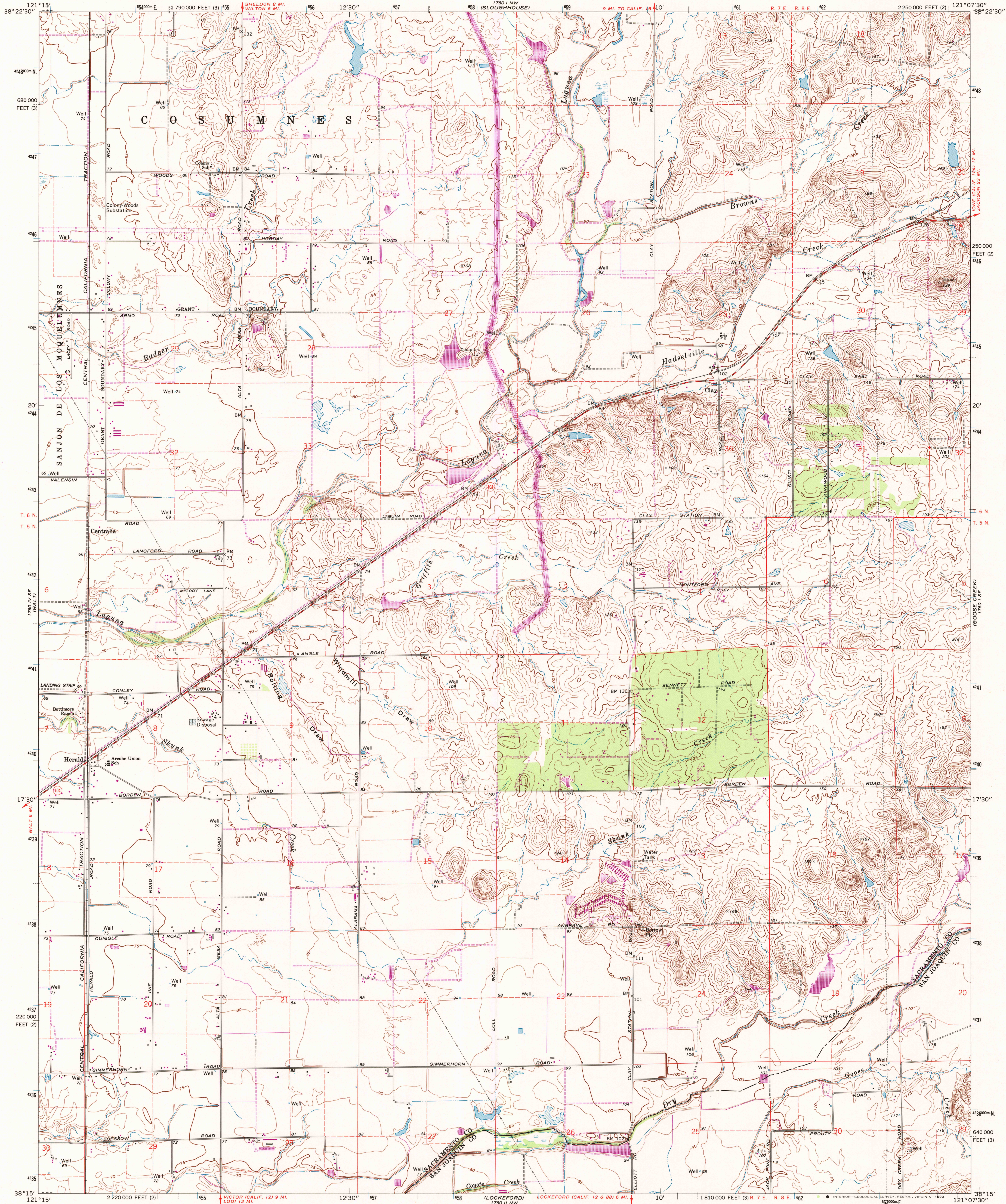
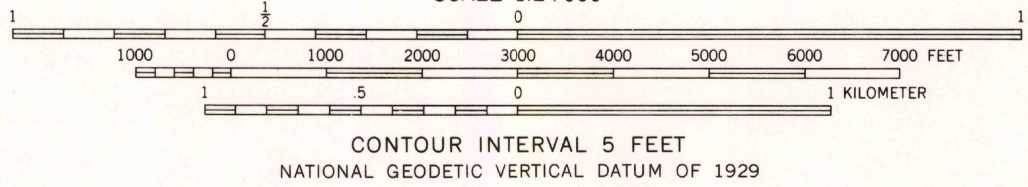
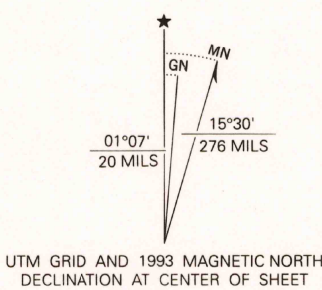


UNITED STATES
DEPARTMENT OF THE INTERIOR
GEOLOGICAL SURVEY

CLAY QUADRANGLE
CALIFORNIA
7.5 MINUTE SERIES (TOPOGRAPHIC)



Produced by the United States Geological Survey
in cooperation with the California
Department of Water Resources
Control by USGS and NOS/NOAA
Compiled from aerial photographs taken 1967. Field checked 1968
Revised from aerial photographs taken 1980
North American Datum of 1927 (NAD 27). Projection and
10,000-foot grid ticks: California Coordinate System,
zones 2 and 3 (Lambert Conformal Conic)
1000-meter Universal Transverse Mercator grid ticks, zone 10,
shown in blue
The difference between NAD 27 and North American Datum of
1983 (NAD 83) for 7.5 minute intersections is given in USGS
Bulletin 1875. The NAD 83 is shown by dashed corner ticks
Photospected from 1991 source; no major culture
or drainage changes observed. Boundaries and names
verified 1993



THIS MAP COMPLIES WITH NATIONAL MAP ACCURACY STANDARDS
FOR SALE BY U.S. GEOLOGICAL SURVEY, DENVER, COLORADO 80225, OR RESTON, VIRGINIA 22092
A FOLDER DESCRIBING TOPOGRAPHIC MAPS AND SYMBOLS IS AVAILABLE ON REQUEST



ROAD CLASSIFICATION
Primary highway, light-duty road, hard or improved surface
Secondary highway, hard surface
Unimproved road
Interstate Route U.S. Route State Route

CLAY, CALIF.
38121-C2-TF-024
MINOR REVISION 1993
PHOTOREVISED 1980
DMA 1760 I SW-SERIES V895