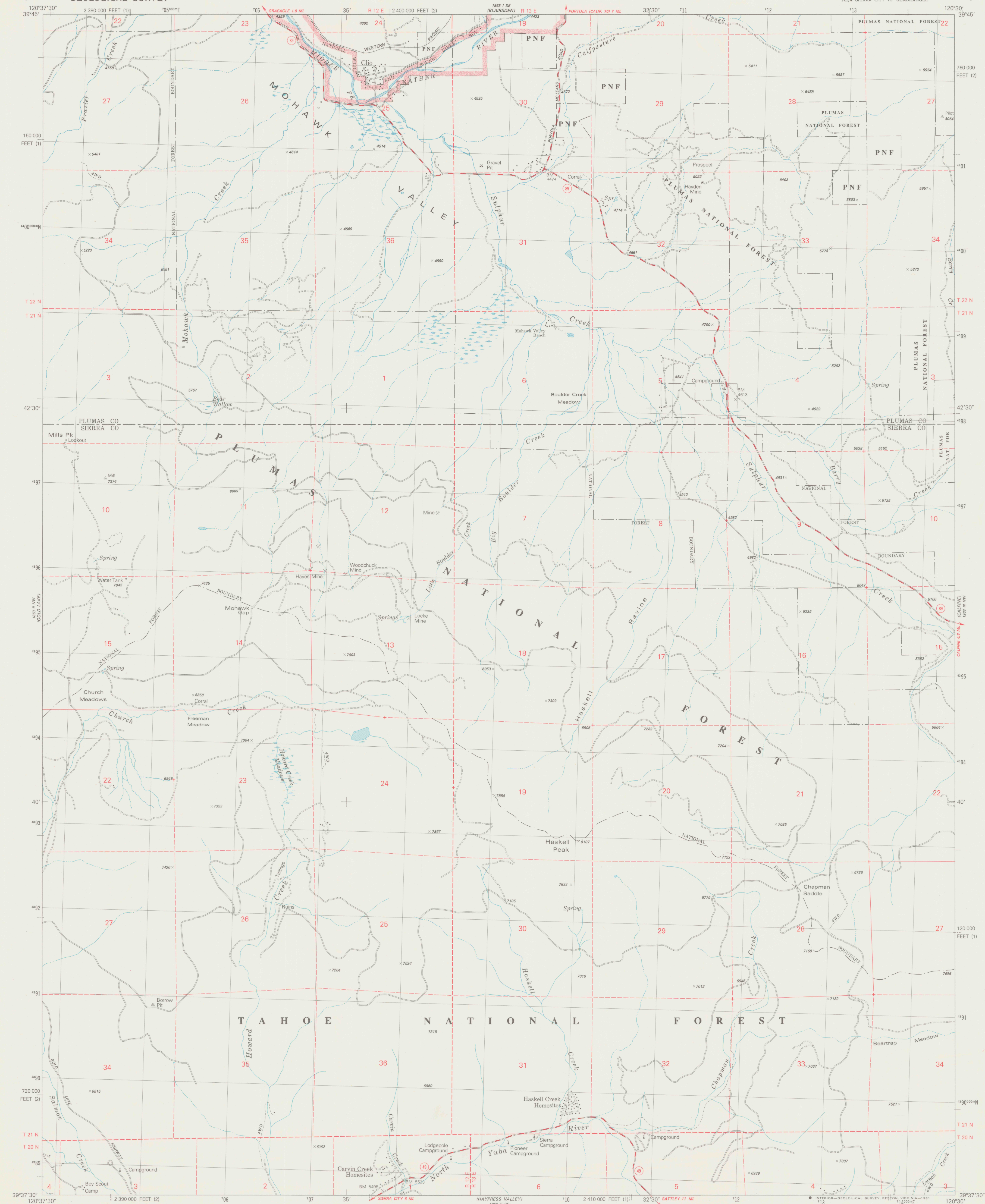


UNITED STATES
DEPARTMENT OF THE INTERIOR
GEOLOGICAL SURVEY

CLIO QUADRANGLE
CALIFORNIA
7.5 MINUTE SERIES (TOPOGRAPHIC)
NE/4 SIERRA CITY 15' QUADRANGLE



Mapped, edited, and published by the Geological Survey

Control by USGS and NOS/NOAA

Topography by photogrammetric methods from aerial photographs

taken 1973-74. Field checked 1975. Map edited 1981

Projection: California coordinate system, zone 2

(Lambert conformal conic)

10,000-foot grid ticks based on California coordinate system,

zones 2 and 1

1000-meter Universal Transverse Mercator grid, zone 11

1927 North American Datum

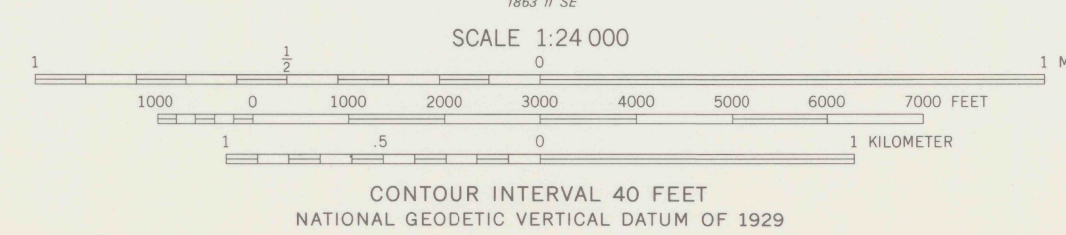
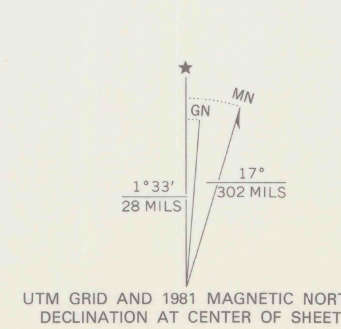
To place on the predicted North American Datum 1983

move the projection lines 15 meters north and

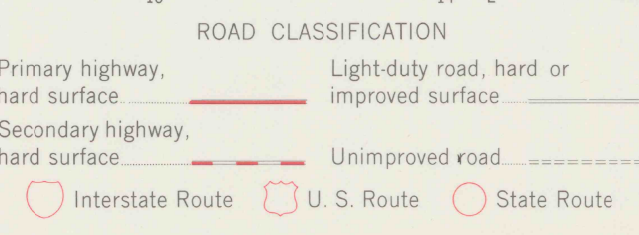
89 meters east as shown by dashed corner ticks

There may be private inholdings within the boundaries of

the National or State reservations shown on this map



THIS MAP COMPLIES WITH NATIONAL MAP ACCURACY STANDARDS
FOR SALE BY U. S. GEOLOGICAL SURVEY, DENVER, COLORADO 80225, OR RESTON, VIRGINIA 22092
A FOLDER DESCRIBING TOPOGRAPHIC MAPS AND SYMBOLS IS AVAILABLE ON REQUEST



CLIO, CALIF.
NE/4 SIERRA CITY 15' QUADRANGLE
N3937.5-W12030.7.5

1981

DO NOT CIRCULATE

REFERENCE
REF
3700s
Var
U5
7.5
ed. 1981