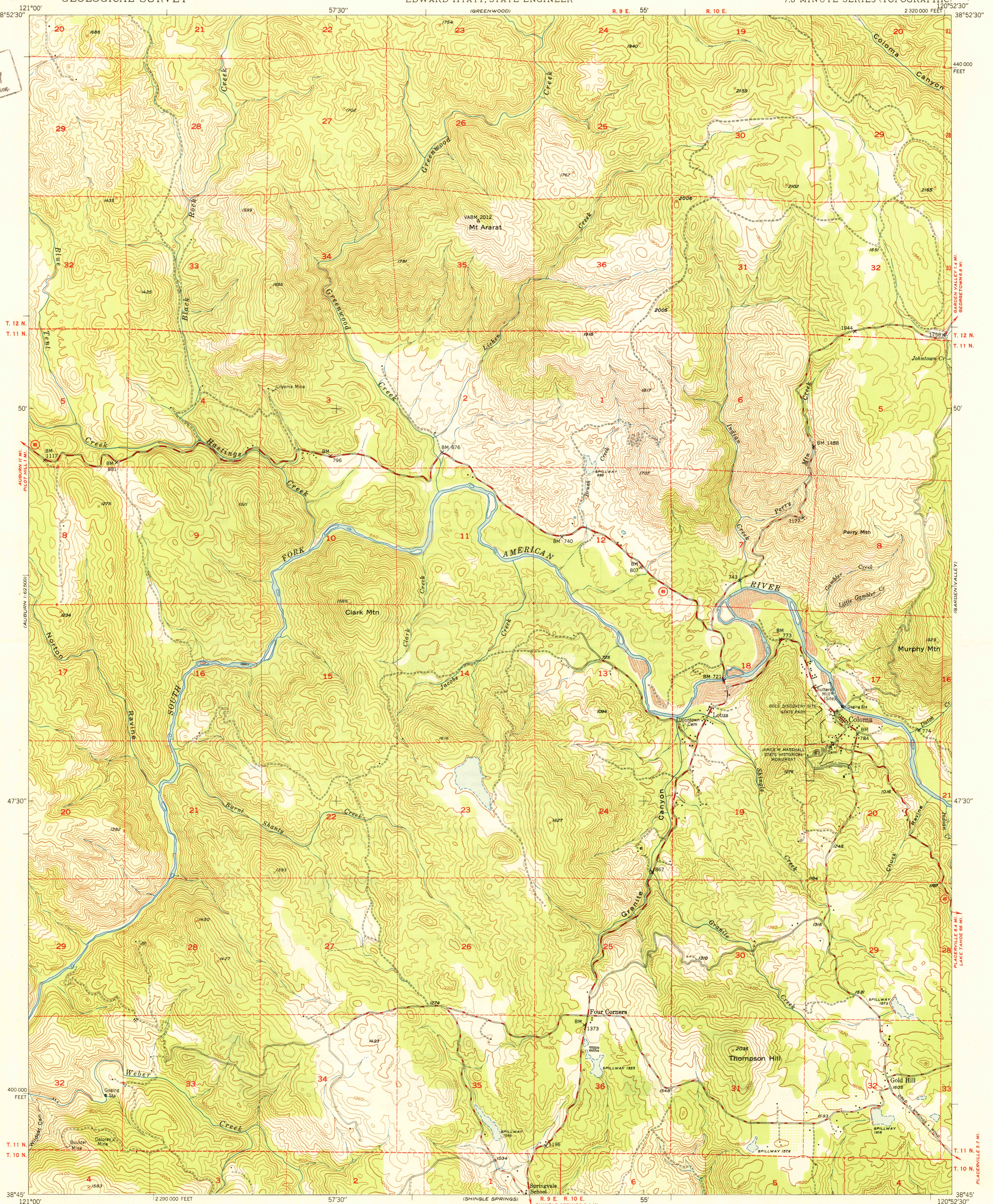
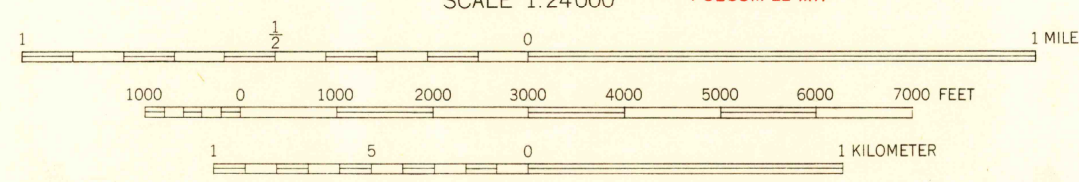
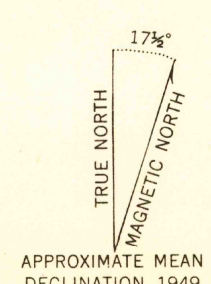


U. S. G. S.  
FILE COPY  
Inspection and Editing.



Maped, edited, and published by the Geological Survey  
Control by USGS and USC&GS  
Topography from aerial photographs by multiplex methods  
Aerial photographs taken 1946. Field check 1949  
Polyconic projection. 1927 North American datum  
10,000-foot grid based on California coordinate system,  
zone 2  
Dashed land lines indicate approximate location



CONTOUR INTERVAL 40 FEET  
DATUM IS MEAN SEA LEVEL

THIS MAP COMPLIES WITH NATIONAL MAP ACCURACY STANDARDS  
FOR SALE BY U. S. GEOLOGICAL SURVEY, FEDERAL CENTER, DENVER, COLORADO OR WASHINGTON 25, D. C.  
A FOLDER DESCRIBING TOPOGRAPHIC MAPS AND SYMBOLS IS AVAILABLE ON REQUEST

ROAD CLASSIFICATION  
Heavy-duty — 2 LANE 16 LANE Improved dirt  
Medium-duty — 4 LANE 16 LANE Unimproved dirt  
Loose-surface, graded, or narrow hard-surface —  
U. S. Route State Route

COLOMA, CALIF.  
N3845-W12052.5/7.5  
EDITION OF 1950

USGS  
Historical File  
Topographic Division  
U. S. G. S.  
FILE COPY  
Inspection and Editing.