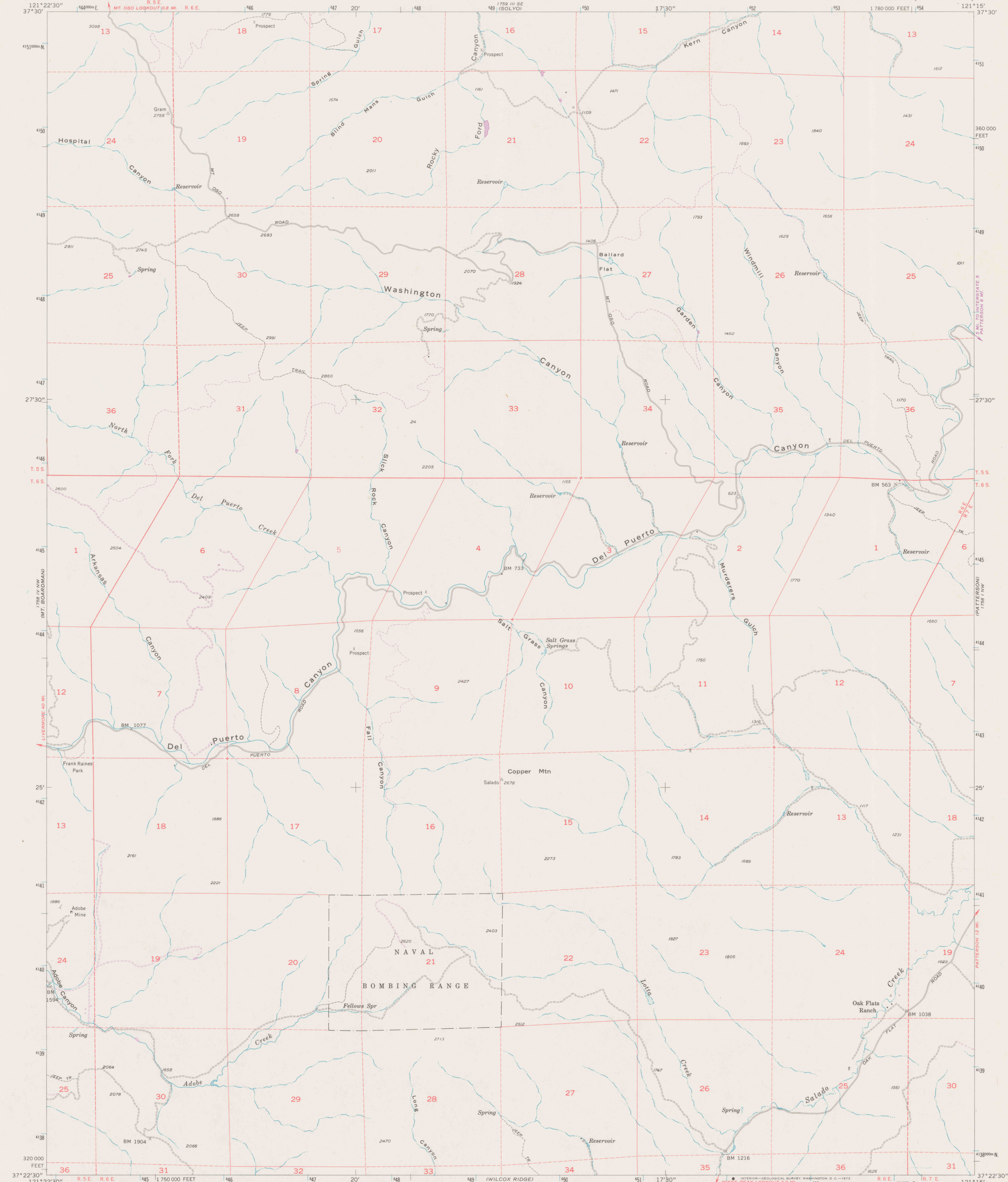
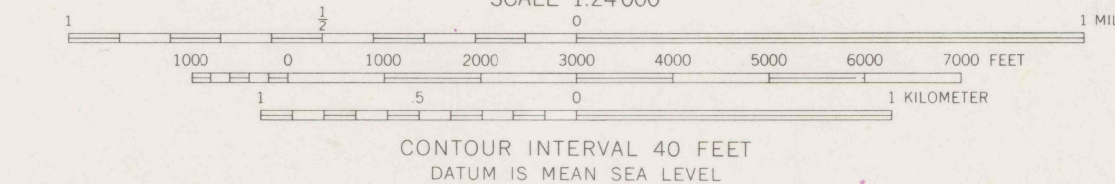
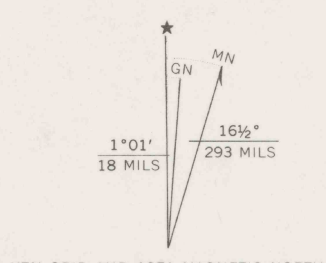


UNITED STATES  
DEPARTMENT OF THE INTERIOR  
GEOLOGICAL SURVEY

COPPER MTN. QUADRANGLE  
CALIFORNIA—STANISLAUS CO.  
7.5 MINUTE SERIES (TOPOGRAPHIC)



Mapped, edited, and published by the Geological Survey  
Control by USGS, USC&GS, and USCE  
Topography from aerial photographs by multiplex methods  
Aerial photographs taken 1953. Field check 1956  
Polyconic projection. 1927 North American datum  
10,000-foot grid based on California coordinate system, zone 3  
1000-meter Universal Transverse Mercator grid ticks,  
zone 10, shown in blue  
Revisions shown in purple compiled from aerial photographs  
taken 1971. This information not field checked



ROAD CLASSIFICATION  
Light-duty ————— Unimproved dirt —————

REF  
3700a  
Var  
COPPER MTN., CALIF.  
N3722.5—W12115.7/7.5

1956  
PHOTOREVISED 1971  
AMS 1758 IV NE—SERIES V695

ed. 1971  
rep. 1972 pp

DO NOT CIRCULATE