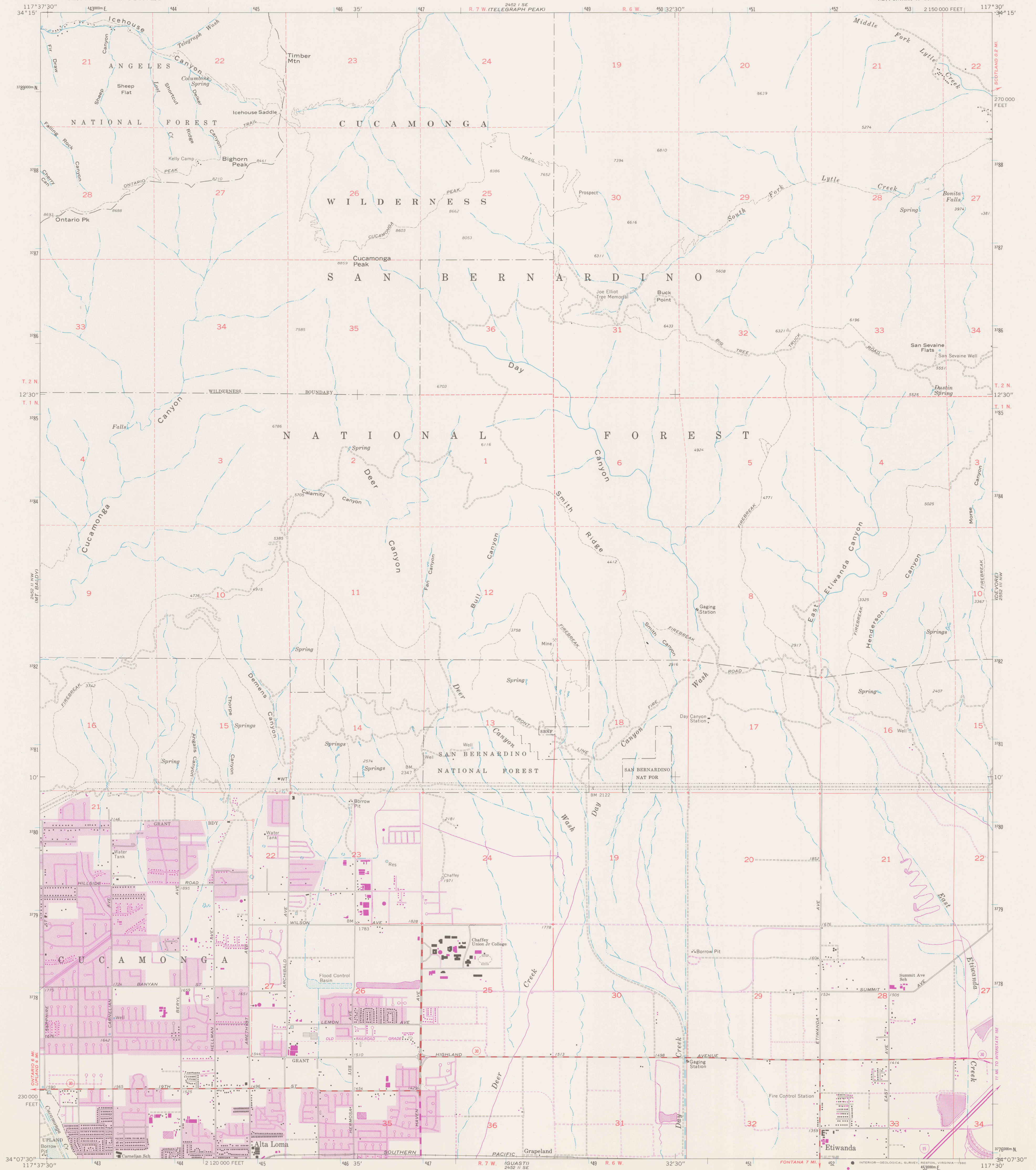


UNITED STATES
DEPARTMENT OF THE INTERIOR
GEOLOGICAL SURVEY

CUCAMONGA PEAK QUADRANGLE
CALIFORNIA—SAN BERNARDINO CO.
7.5 MINUTE SERIES (TOPOGRAPHIC)
NE 1/4 ONTARIO 15' QUADRANGLE



Maped, edited, and published by the Geological Survey
Revised in cooperation with California Department of
Water Resources
Control by USGS and USC&GS
Topography by photogrammetric methods from aerial photographs
taken 1952 and planetable surveys 1933. Field checked 1953
Revised from aerial photographs taken 1966. Field checked 1966
Polyconic projection
10,000-foot grid based on California coordinate system, zone 5
1000-meter Universal Transverse Mercator grid ticks,
zone 11, shown in blue. 1927 North American Datum
To place on the predicted North American Datum 1983
move the projection lines 2 meters north and
83 meters east as shown by dashed corner ticks

UTM GRID AND 1980 MAGNETIC NORTH
DECLINATION AT CENTER OF SHEET
0°19' 6" N
14° 25' N
14° 25' N
258 MILS
14° 25' N
258 MILS
14° 25' N
258 MILS

SCALE 1:24,000
0 1000 2000 3000 4000 5000 6000 7000 FEET
0 1 2 3 4 5 6 7 8 9 10 KILOMETER
CONTOUR INTERVAL 40 FEET
NATIONAL GEODETIC VERTICAL DATUM OF 1929

THIS MAP COMPLIES WITH NATIONAL MAP ACCURACY STANDARDS
FOR SALE BY U. S. GEOLOGICAL SURVEY, DENVER, COLORADO 80225, OR RESTON, VIRGINIA 22092
A FOLDER DESCRIBING TOPOGRAPHIC MAPS AND SYMBOLS IS AVAILABLE ON REQUEST

ROAD CLASSIFICATION
Heavy duty ——— Light-duty ———
Medium-duty ——— Unimproved dirt ———
Interstate Route ——— U. S. Route ——— State Route ———
CUCAMONGA PEAK, CALIF.
NE 1/4 ONTARIO 15' QUADRANGLE
N3407.5—W11730/7.5
1966
PHOTOREVISED 1980
DMA 2452 II NE-SERIES V895

REF
3700b
Var
U5
7.5
ed. 10 80 PP

REFERENCE