

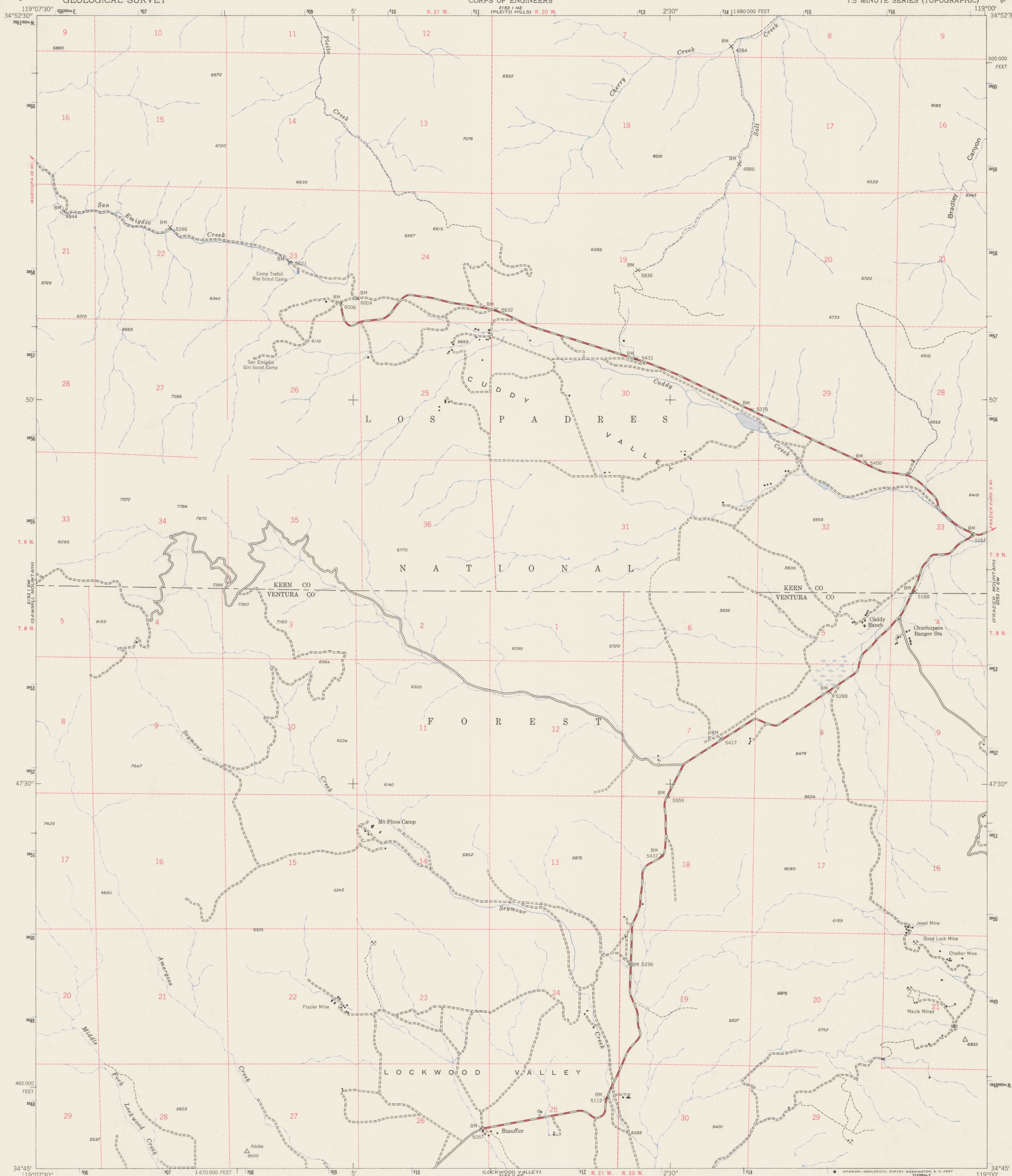
2153 I NW (GRAPEVINE)  
2153 I NW (GRAPEVINE)

UNITED STATES  
DEPARTMENT OF THE INTERIOR  
GEOLOGICAL SURVEY

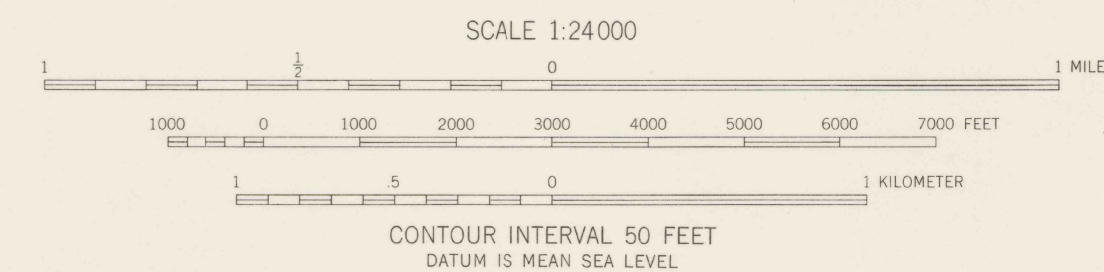
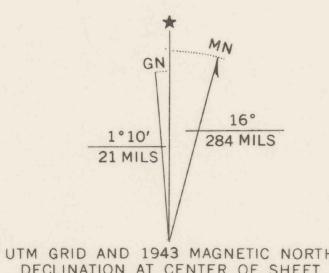
UNITED STATES  
DEPARTMENT OF THE ARMY  
CORPS OF ENGINEERS

CUDDY VALLEY QUADRANGLE  
CALIFORNIA  
7.5 MINUTE SERIES (TOPOGRAPHIC)

2153 I NW (GRAPEVINE)  
2153 I NW (GRAPEVINE)



Maped by the Army Map Service  
Published for civil use by the Geological Survey  
Control by USGS, USC&GS, and USFS  
Topography from aerial photographs by photogrammetric methods  
Aerial photographs taken 1942. Field check 1943  
Polyconic projection. 1927 North American datum  
10,000-foot grid based on California coordinate system, zone 5  
1000-meter Universal Transverse Mercator grid ticks,  
zone 11, shown in blue  
Dashed land lines indicate approximate locations



ROAD CLASSIFICATION  
Medium-duty ——— Light-duty ———  
Unimproved dirt =====

CUDDY VALLEY, CALIF.  
N3445-W11900/7.5  
1943

AMS 2153 I SE—SERIES V895

REFERENCE

SPECIAL PRINTING  
Contours and woodland symbols omitted

REF  
3700  
Var  
U5  
7.5  
ed. 1943  
rep. 1967pp