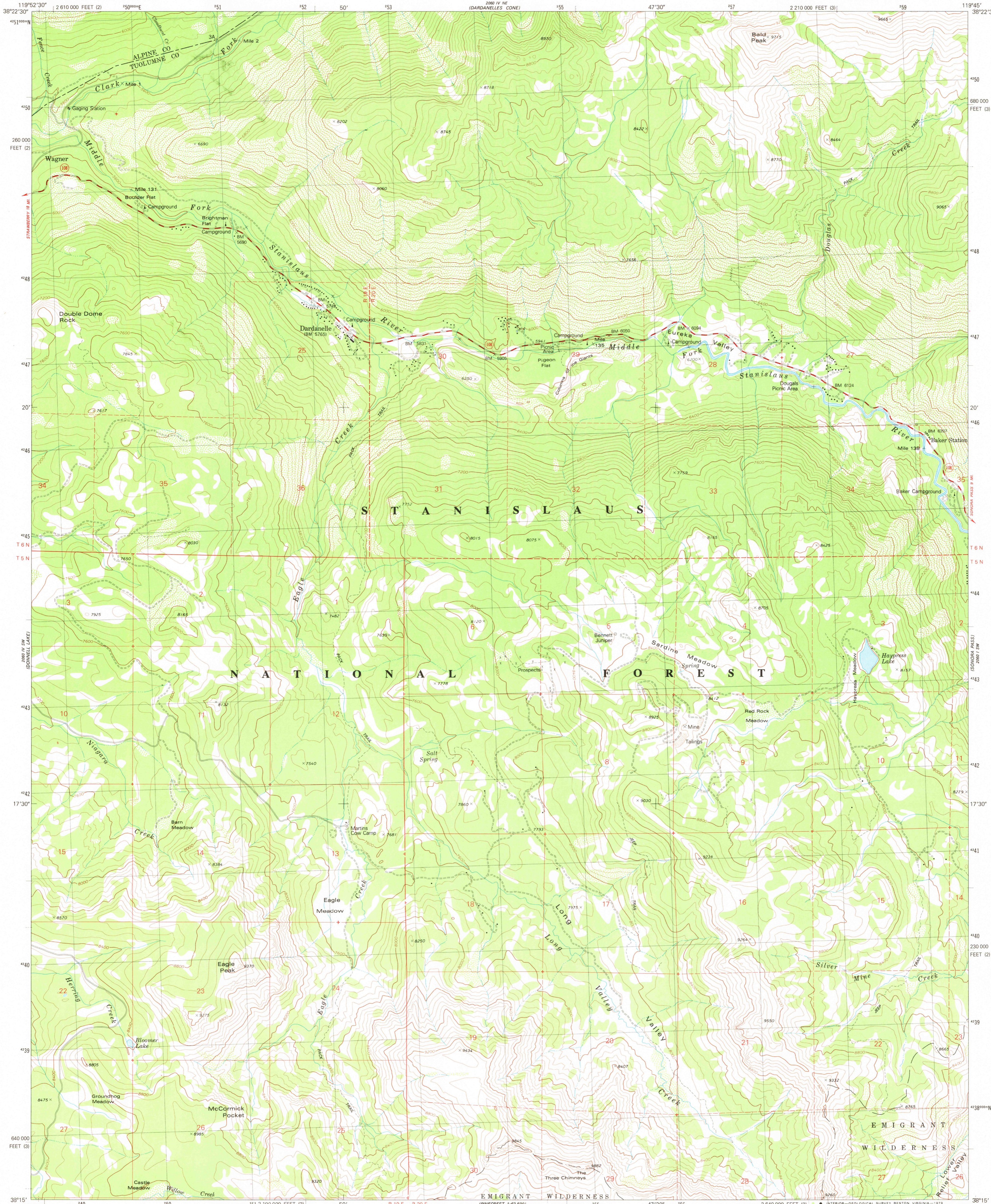


UNITED STATES
DEPARTMENT OF THE INTERIOR
GEOLOGICAL SURVEY



DARDANELLE QUADRANGLE
CALIFORNIA
7.5 MINUTE SERIES (TOPOGRAPHIC)
SE/4 DARDANELLES CONE 15' QUADRANGLE



Mapped, edited, and published by the Geological Survey

Control by USGS and NOS/NOAA

Topography by photogrammetric methods from aerial photographs taken 1973. Field checked 1974. Map edited 1979

Projection: California coordinate system, zone 3 (Lambert conformal conic)

10,000-foot grid ticks based on California coordinate system, zones 3 and 2

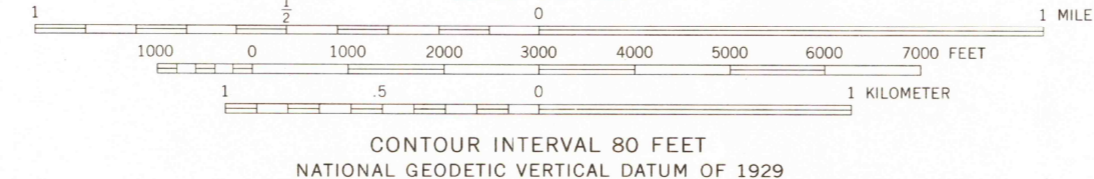
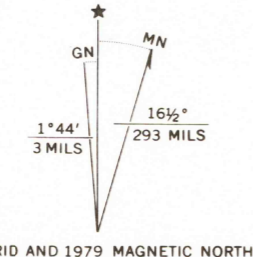
1000-meter Universal Transverse Mercator grid, zone 11

1927 North American datum

To place on the predicted North American Datum 1983 move the projection lines 12 meters north and 87 meters east as shown by the dashed corner ticks

Where omitted, land lines have not been established or are not shown because of insufficient data

There may be private inholdings within the boundaries of the National or State reservations shown on this map



THIS MAP COMPLIES WITH NATIONAL MAP ACCURACY STANDARDS
FOR SALE BY U.S. GEOLOGICAL SURVEY, DENVER, COLORADO 80225, OR RESTON, VIRGINIA 22092
A FOLDER DESCRIBING TOPOGRAPHIC MAPS AND SYMBOLS IS AVAILABLE ON REQUEST

ROAD CLASSIFICATION	
Primary highway, hard surface	Light-duty road, hard or improved surface
Secondary highway, hard surface	Unimproved road
Interstate Route	U. S. Route
	State Route



QUADRANGLE LOCATION

USGS
Historical File
Topographic Division

DARDANELLE, CALIF.
SE/4 DARDANELLES CONE 15' QUADRANGLE
N3815-W11945/7.5

1979

DMA 2060 IV SE—SERIES V895

FEB 3 1981
10200