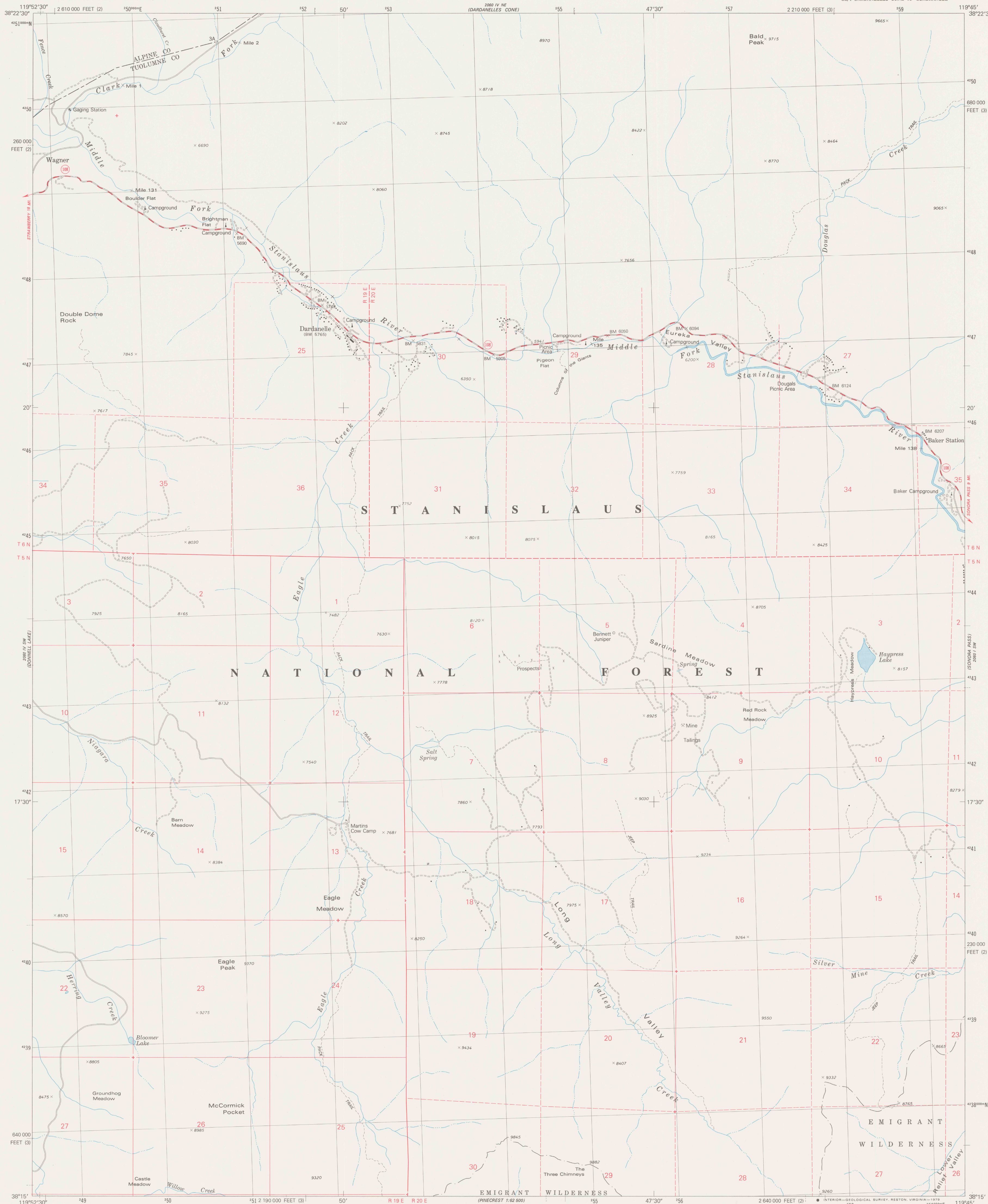


UNITED STATES
DEPARTMENT OF THE INTERIOR
GEOLOGICAL SURVEY

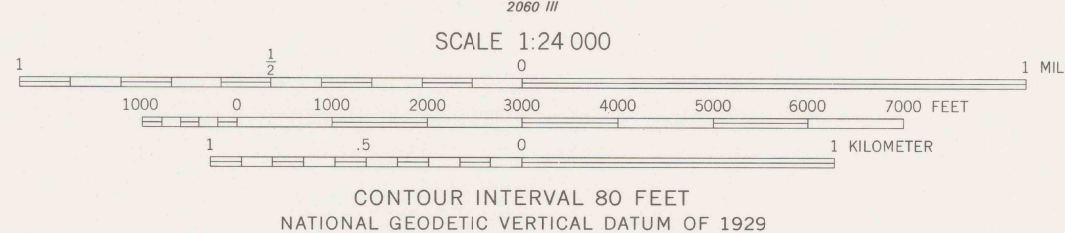
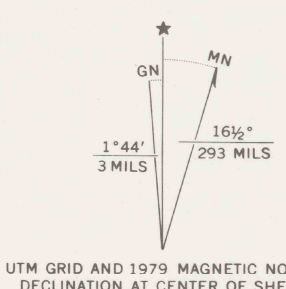


DARDANELLE QUADRANGLE
CALIFORNIA
7.5 MINUTE SERIES (TOPOGRAPHIC)
8E/4 DARDANELLES CONE 19' QUADRANGLE

2000 1/4 IN. (50.8 MM)
2000 1/4 IN. (50.8 MM)
2000 1/4 IN. (50.8 MM)



Mapped, edited, and published by the Geological Survey
Control by USGS and NOS/NOAA
Topography by photogrammetric methods from aerial
photographs taken 1973. Field checked 1974. Map edited 1979
Projection: California coordinate system, zone 3
(Lambert conformal conic)
10,000-foot grid ticks based on California coordinate
system, zones 3 and 2
1000-meter Universal Transverse Mercator grid, zone 11
1927 North American datum
To place on the predicted North American Datum 1983
move the projection lines 12 meters north and
87 meters east as shown by the dashed corner ticks
Where omitted, land lines have not been established
or are not shown because of insufficient data
There may be private inholdings within the boundaries of
the National or State reservations shown on this map



ROAD CLASSIFICATION
Primary highway, hard surface
Secondary highway, hard surface
Unimproved road
Interstate Route
U.S. Route
State Route

REFERENCE

DARDANELLE, CALIF.
8E/4 DARDANELLES CONE 19' QUADRANGLE
N3815-W11945/7.5

1979

DMA 2060 IV SE-SERIES W895

THIS MAP COMPLIES WITH NATIONAL MAP ACCURACY STANDARDS
FOR SALE BY U.S. GEOLOGICAL SURVEY, DENVER, COLORADO 80225, OR RESTON, VIRGINIA 22092
A FOLDER DESCRIBING TOPOGRAPHIC MAPS AND SYMBOLS IS AVAILABLE ON REQUEST

DO NOT CIRCULATE

REB
3700a
Van
U5
7.5
d. 1979 PP