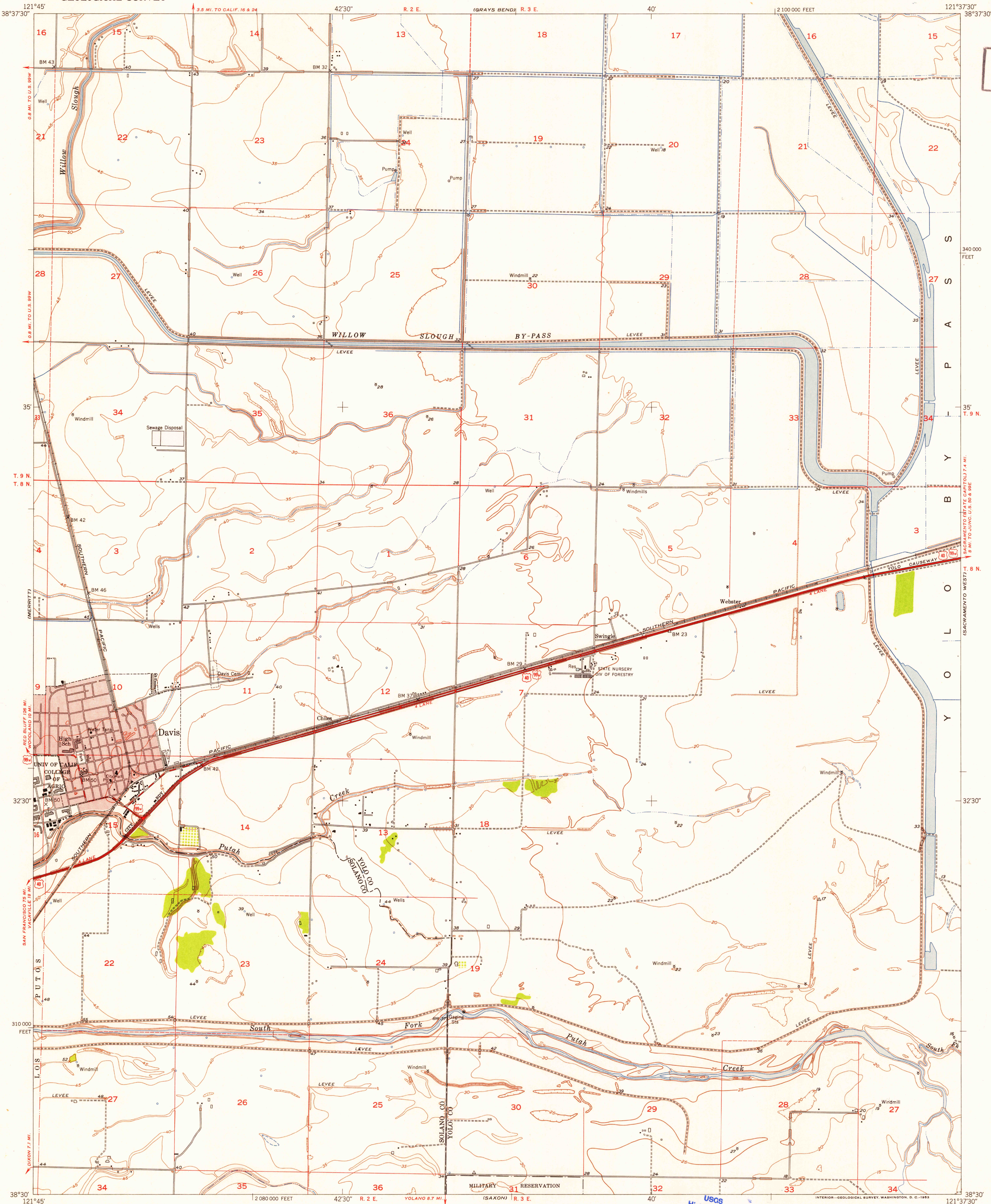


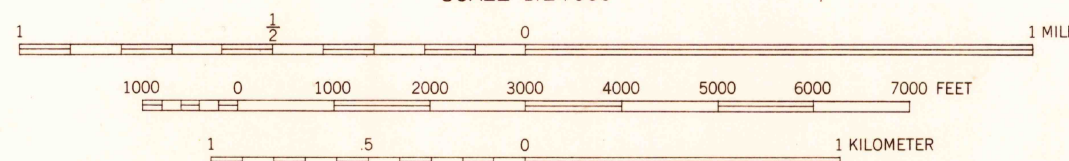
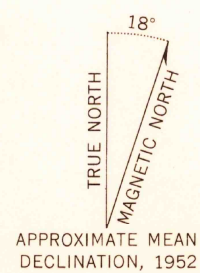
UNITED STATES
DEPARTMENT OF THE INTERIOR
GEOLOGICAL SURVEY

DAVIS QUADRANGLE
CALIFORNIA
7.5 MINUTE SERIES (TOPOGRAPHIC)

U.S.G.S.
FILE COPY
Inspection and Editing



Maped, edited, and published by the Geological Survey
Control by USGS and USC&GS
Maped 1905; remapped 1952
Culture and drainage from photo-mosaic by USBR
Aerial photographs taken 1949
Topography from plane-table surveys by USGS 1952
Polyconic projection. 1927 North American datum
10,000-foot grid based on California coordinate system, zone 2
Red tint indicates area in which only landmark buildings are shown
Dashed land lines indicate approximate locations
Yolo By-Pass area subject to inundation
during periods of high water



CONTOUR INTERVAL 5 FEET
CONTOURS INCOMPLETE ALONG EMBANKMENTS AND DITCHES
DATUM IS MEAN SEA LEVEL

THIS MAP COMPLIES WITH NATIONAL MAP ACCURACY STANDARDS
FOR SALE BY U.S. GEOLOGICAL SURVEY, FEDERAL CENTER, DENVER, COLORADO OR WASHINGTON 25, D. C.
A FOLDER DESCRIBING TOPOGRAPHIC MAPS AND SYMBOLS IS AVAILABLE ON REQUEST

USGS
Historical File
Topographic Division



ROAD CLASSIFICATION
Heavy-duty 4 LANE 16 LANE Light-duty
Medium-duty 4 LANE 16 LANE Unimproved dirt
U.S. Route State Route

U.S.G.S.
FILE COPY
Inspection and Editing

DAVIS, CALIF.
N3830-W12137.5/7.5

1952

NAME CHANGED FROM SWINGLE
(1:31682)

SEP 11 1953

3745