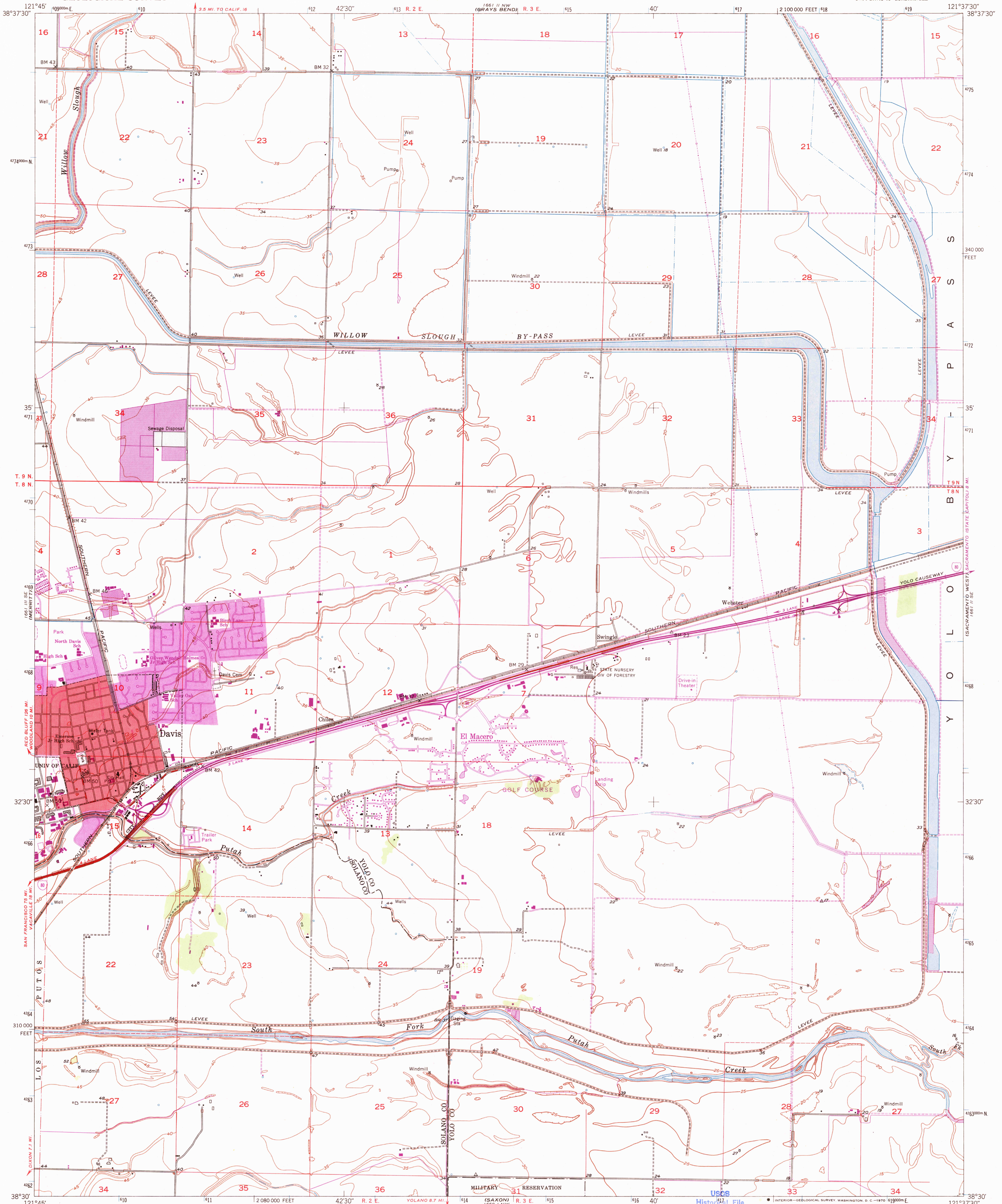


UNITED STATES  
DEPARTMENT OF THE INTERIOR  
GEOLOGICAL SURVEY

DAVIS QUADRANGLE  
CALIFORNIA  
7.5 MINUTE SERIES (TOPOGRAPHIC)  
SW/4 DAVIS 15' QUADRANGLE



Mapped, edited, and published by the Geological Survey  
Control by USGS and USC&GS

Control by USGS and USC&GS  
Mapped 1905; remapped 1952

Culture and drainage from photo-mosaic by USBR  
Aerial photographs taken 1949

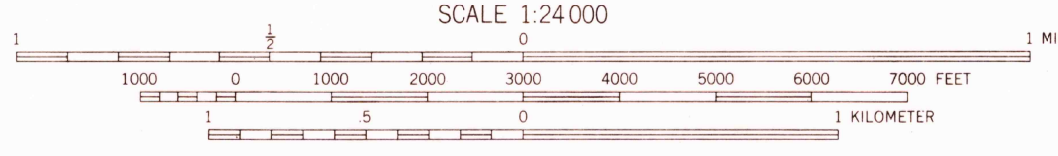
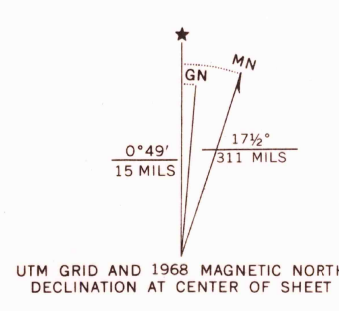
Topography from plane-table surveys by USGS 1952  
Polyconic projection. 1927 North American datum

10,000-foot grid based on California coordinate system, zone 2  
Red tint indicates area in which only landmark buildings are shown

Dashed land lines indicate approximate locations  
Yolo By-Pass area subject to inundation

during periods of high water  
1000-meter Universal Transverse Mercator grid ticks,

zone 10, shown in blue



CONTOUR INTERVAL 5 FEET  
CONTOURS INCOMPLETE ALONG EMBANKMENTS AND DITCHES  
DATUM IS MEAN SEA LEVEL

THIS MAP COMPLIES WITH NATIONAL MAP ACCURACY STANDARDS  
FOR SALE BY U.S. GEOLOGICAL SURVEY, DENVER, COLORADO 80225 OR WASHINGTON, D. C. 20242  
A FOLDER DESCRIBING TOPOGRAPHIC MAPS AND SYMBOLS IS AVAILABLE ON REQUEST

USGS  
Topographic Division



ROAD CLASSIFICATION  
Heavy-duty \_\_\_\_\_ Light-duty \_\_\_\_\_  
Medium-duty \_\_\_\_\_ Unimproved dirt \_\_\_\_\_

U.S.G.S. Interstate Route  
FILE COPY  
TOPOGRAPHIC DIVISION

DAVIS, CALIF.  
SW/4 DAVIS 15' QUADRANGLE  
N3830-W12137.5/7.5

1952  
PHOTOGRAPHED 1968  
AMS 1661 II SW-SERIES V895

Revisions shown in purple compiled from aerial photographs  
taken 1968. This information not field checked  
Purple tint indicates extension of urban areas

3815  
FEB 4 1970