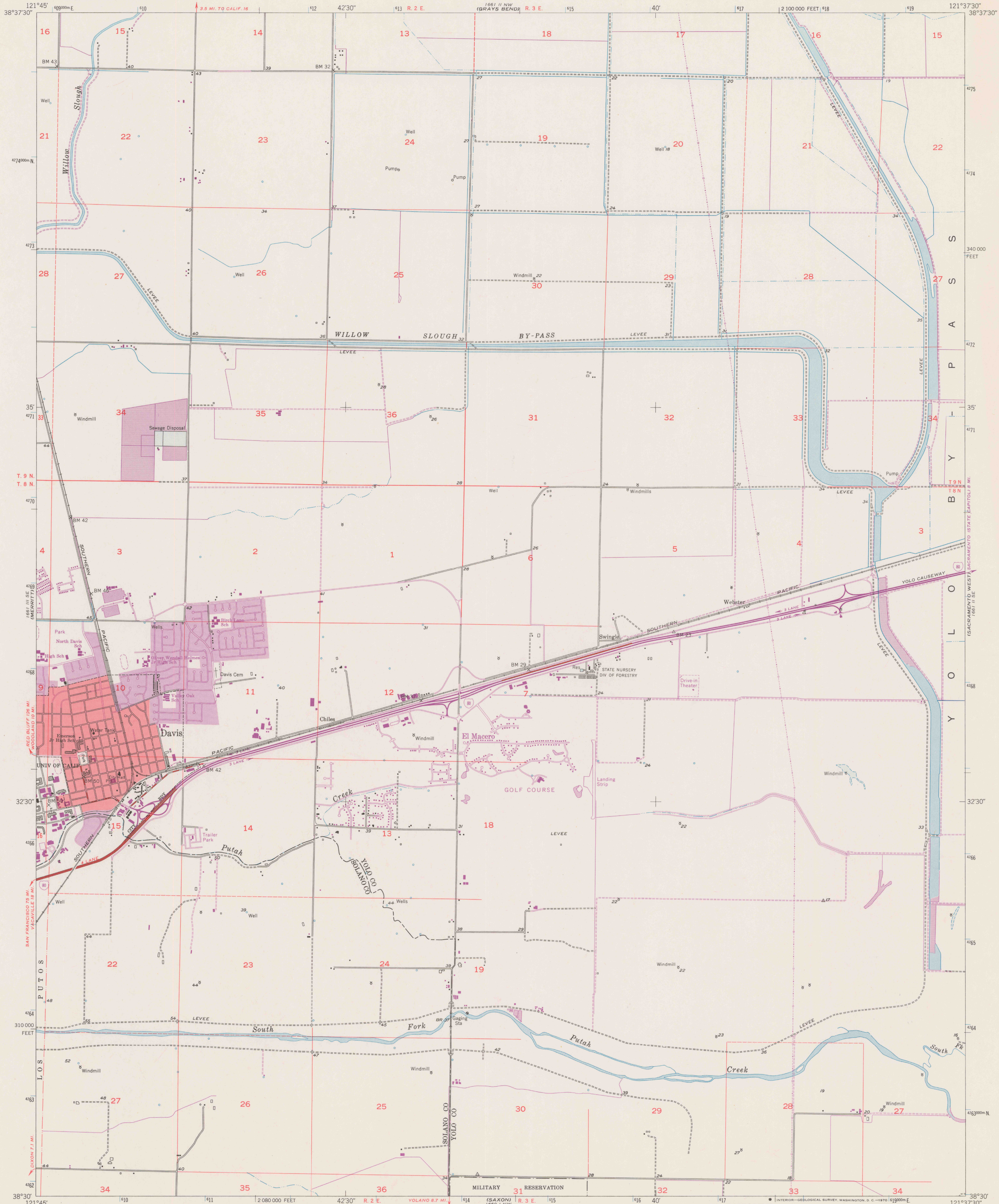


WOODLAND 1661 II SE

UNITED STATES
DEPARTMENT OF THE INTERIOR
GEOLOGICAL SURVEY

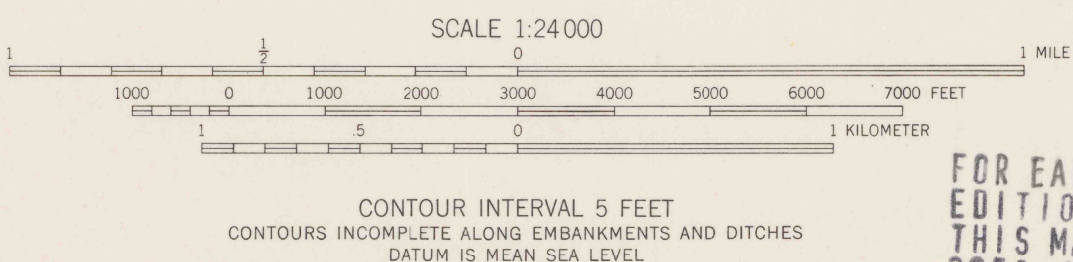
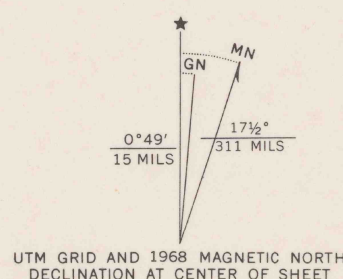
DAVIS QUADRANGLE
CALIFORNIA
7.5 MINUTE SERIES (TOPOGRAPHIC)
SW/4 DAVIS 15' QUADRANGLE

WOODLAND 1661 II SE
(TAYLOR MONUMENT #7)



SPECIAL PRINTING
Contours and woodland symbols omitted

Mapped, edited, and published by the Geological Survey
Control by USGS and USC&GS
Mapped 1905; remapped 1952
Culture and drainage from photo-mosaic by USBR
Aerial photographs taken 1949
Topography from plane-table surveys by USGS 1952
Polyconic projection. 1927 North American datum
10,000-foot grid based on California coordinate system, zone 2
Red tint indicates area in which only landmark buildings are shown
Dashed land lines indicate approximate locations
Yolo By-Pass area subject to inundation during periods of high water
1000-meter Universal Transverse Mercator grid ticks, zone 10, shown in blue



THIS MAP COMPLIES WITH NATIONAL MAP ACCURACY STANDARDS.
FOR SALE BY U.S. GEOLOGICAL SURVEY, DENVER, COLORADO 80225 OR WASHINGTON, D.C. 20242
A FOLDER DESCRIBING TOPOGRAPHIC MAPS AND SYMBOLS IS AVAILABLE ON REQUEST

RECEIVED
SACRAMENTO

ROAD CLASSIFICATION
Heavy-duty ——— Light-duty ———
Medium-duty ——— Unimproved dirt ———
Interstate Route



FOR EARLIEST
EDITION OF
THIS MAP SEE
3052.C46 31.U5
Swingje

DO NOT CIRCULATE

Revisions shown in purple compiled from aerial photographs taken 1968. This information not field checked
Purple tint indicates extension of urban areas

DAVIS, CALIF.
SW/4 DAVIS 15' QUADRANGLE
N3830—W12137.5/7.5
1952
PHOTOGRAPHED 1968
AMS 1661 II SW—SERIES V895

REFERENCE
REF 3700e
Var U5
7.5
ed. 1968
rep. 1970