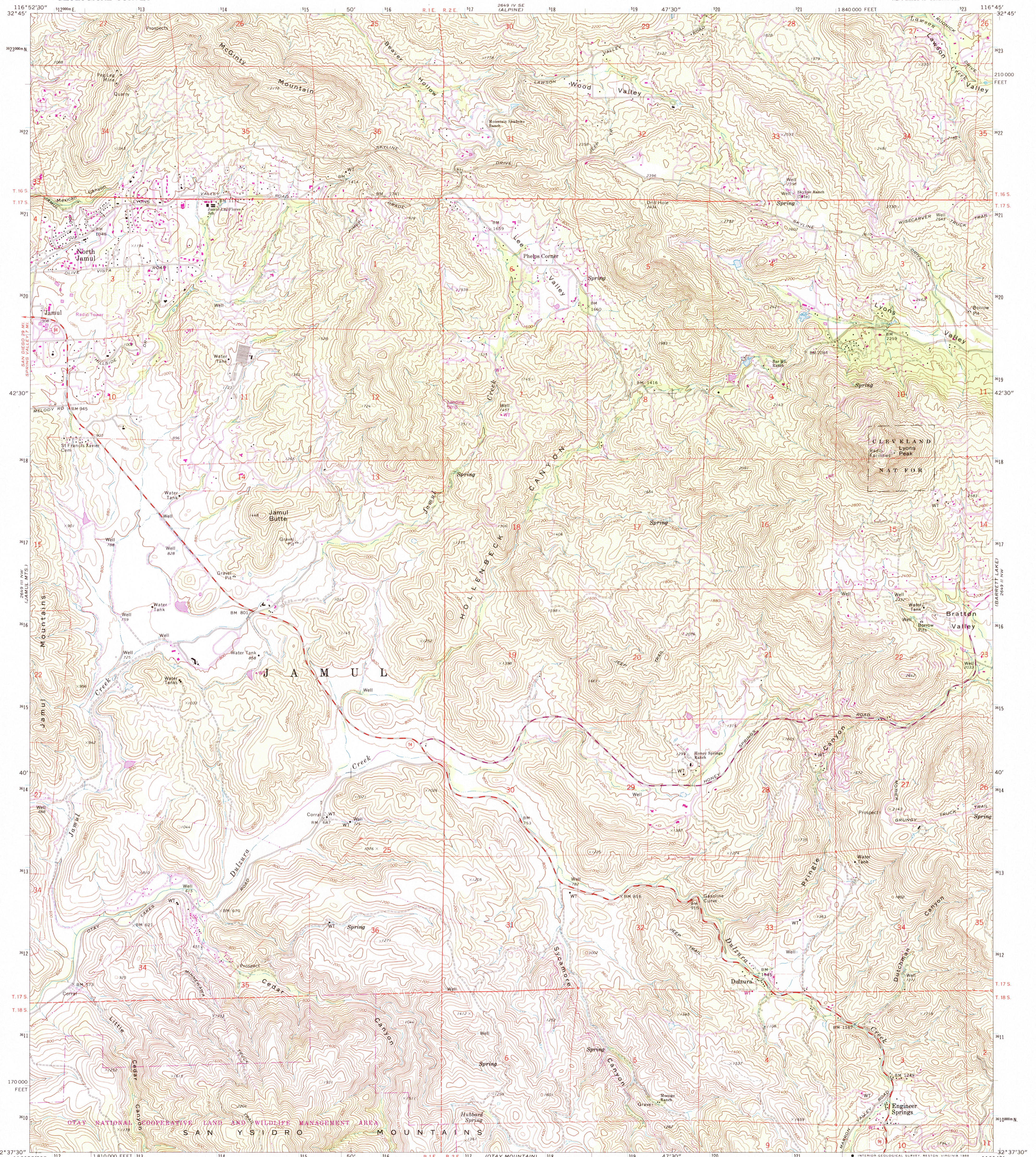


2649 III SW
EL CANYON

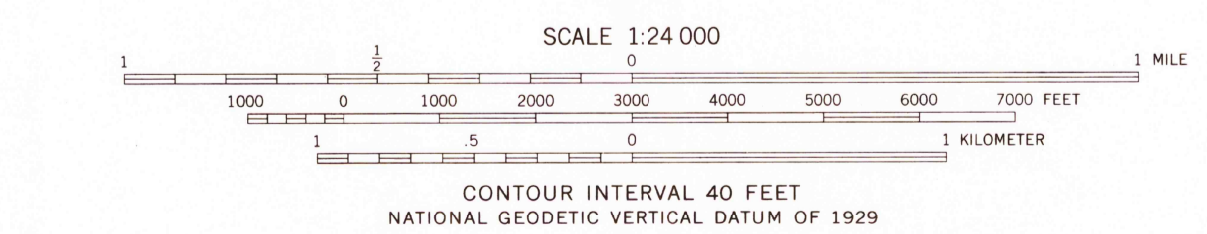
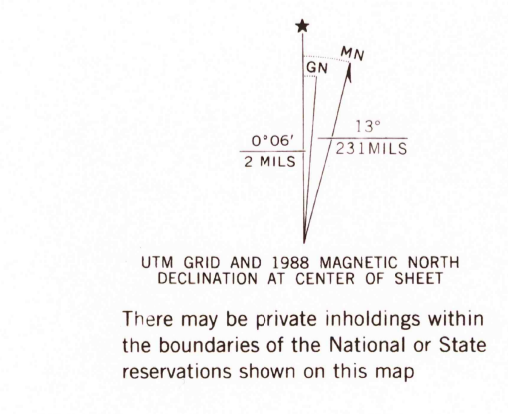
UNITED STATES
DEPARTMENT OF THE INTERIOR
GEOLOGICAL SURVEY

DULZURA QUADRANGLE
CALIFORNIA—SAN DIEGO CO.
7.5 MINUTE SERIES (TOPOGRAPHIC)
NE/4 JAMUL 15' QUADRANGLE

2649 III NW
(VICAS MTS.)



Mapped, edited, and published by the Geological Survey
Control by USGS and NOS/NOAA
Topography by photogrammetric methods from aerial photographs taken 1971. Field checked 1972
Projection and 10,000-foot grid ticks: California coordinate system, zone 6 (Lambert conformal conic)
1000-meter Universal Transverse Mercator grid ticks, zone 11, shown in blue. 1927 North American Datum
Fine red dashed lines indicate selected fence lines
Certain land lines have been omitted because of insufficient data
Dotted lines established by private survey
To place on the predicted North American Datum 1983 move the projection lines 4 meters south and 80 meters east as shown by dashed corner ticks



ROAD CLASSIFICATION

Primary highway, hard surface	Light-duty road, hard or improved surface
Secondary highway, hard surface	Unimproved road
Interstate Route	U.S. Route
	State Route



THIS MAP COMPLIES WITH NATIONAL MAP ACCURACY STANDARDS
FOR SALE BY U.S. GEOLOGICAL SURVEY, DENVER, COLORADO 80225, OR RESTON, VIRGINIA 22092
A FOLDER DESCRIBING TOPOGRAPHIC MAPS AND SYMBOLS IS AVAILABLE ON REQUEST

Revisions shown in purple and woodland compiled from aerial photographs taken 1985 and other source data. Partial field check by U.S. Forest Service. Map edited 1988
DEC 06 1988
REC'D FILE COPY
DULZURA, CALIF.
NE/4 JAMUL 15' QUADRANGLE
32116-F7-TF-024
1972
PHOTOREVISED 1988
DMA 2649 III NE—SERIES V895