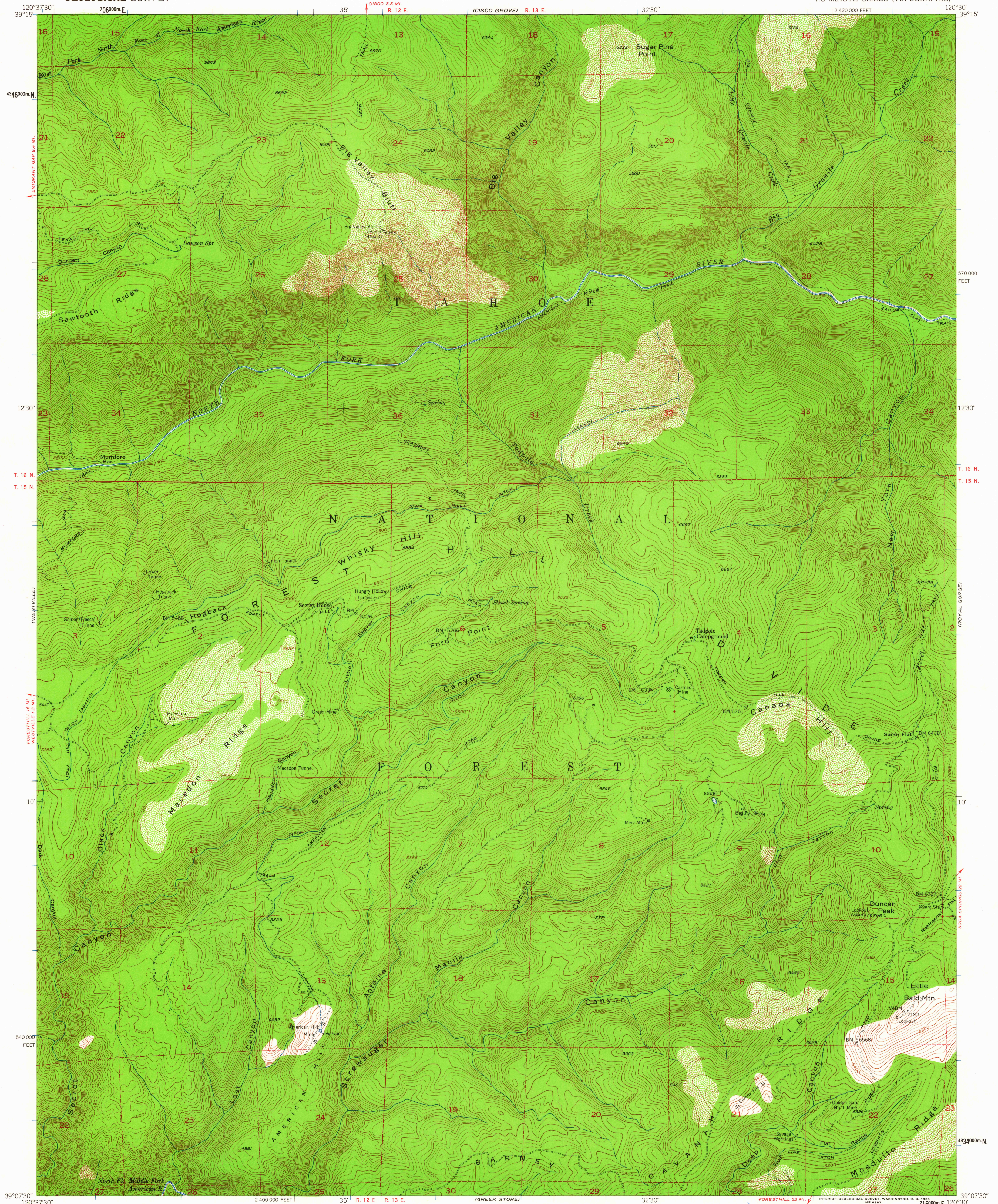
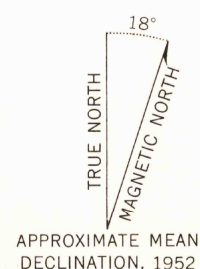


UNITED STATES  
DEPARTMENT OF THE INTERIOR  
GEOLOGICAL SURVEY

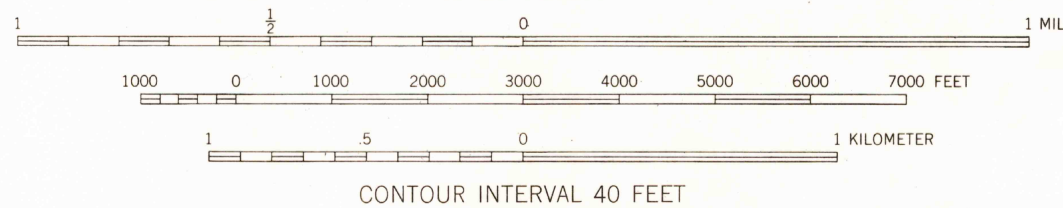
DUNCAN PEAK QUADRANGLE  
CALIFORNIA-PLACER CO.  
7.5 MINUTE SERIES (TOPOGRAPHIC)



Mapped, edited, and published by the Geological Survey  
Control by USGS and USC&GS  
Topography from aerial photographs by multiplex methods  
Aerial photographs taken 1948. Field check 1952  
Polyconic projection. 1927 North American datum  
10,000-foot grid based on California coordinate system, zone 2  
Dashed land lines indicate approximate locations  
Unchecked elevations are shown in brown  
1000-meter Universal Transverse Mercator grid ticks,  
zone 10, shown in blue



APPROXIMATE MEAN  
DECLINATION, 1952



CONTOUR INTERVAL 40 FEET  
DATUM IS MEAN SEA LEVEL

THIS MAP COMPLIES WITH NATIONAL MAP ACCURACY STANDARDS  
FOR SALE BY U. S. GEOLOGICAL SURVEY, DENVER 25, COLORADO OR WASHINGTON 25, D. C.  
A FOLDER DESCRIBING TOPOGRAPHIC MAPS SYMBOLS IS AVAILABLE ON REQUEST

USGS  
Historical File  
Topographic Division



QUADRANGLE LOCATION

U.S.G.S.  
FILE COPY  
TOPOGRAPHIC DIVISION

ROAD CLASSIFICATION  
1953  
Light-duty ————— Unimproved dirt —————

DUNCAN PEAK, CALIF.  
N3907.5-W12030/7.5  
1952

JUL 23 1953

3125