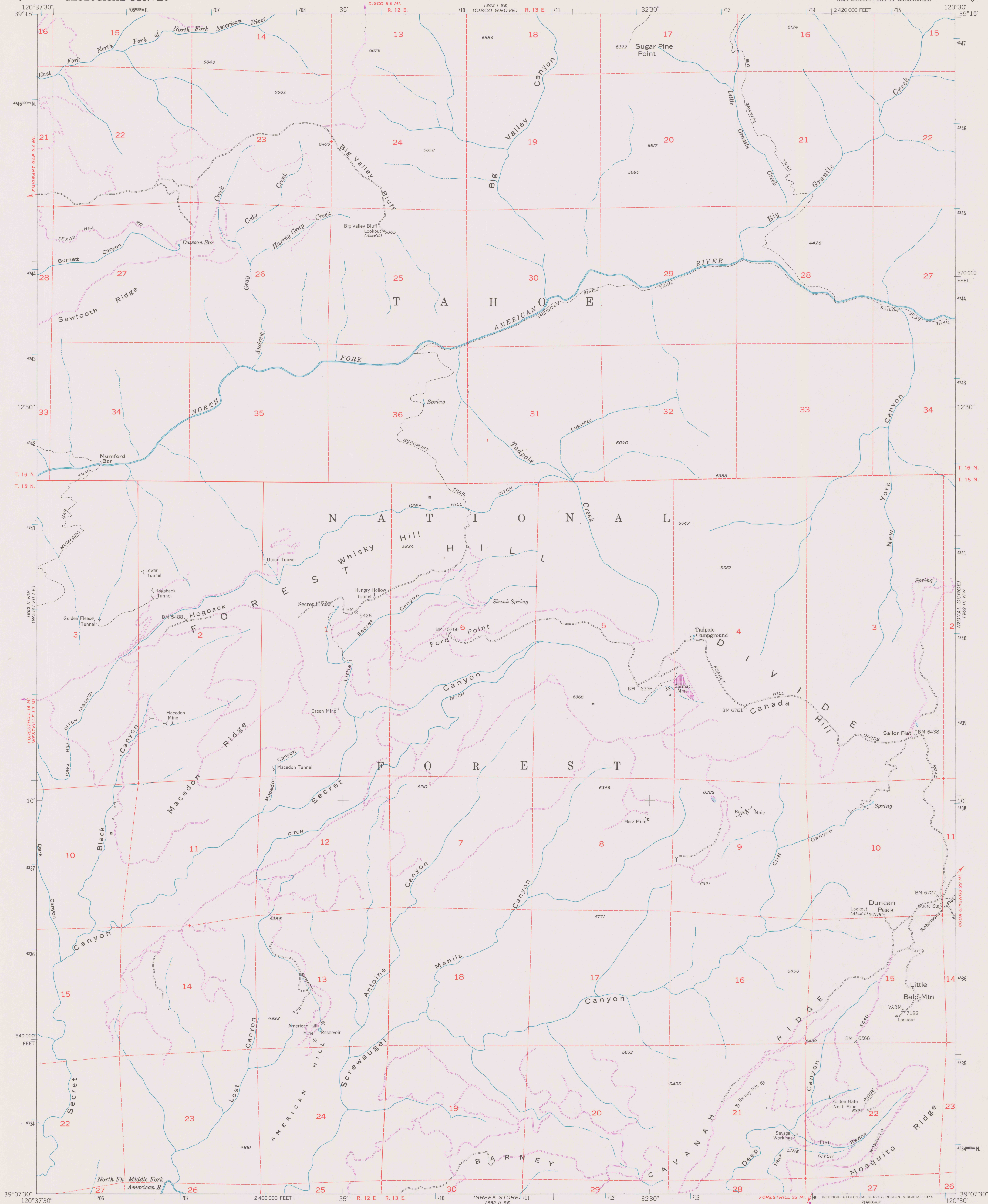


UNITED STATES
DEPARTMENT OF THE INTERIOR
GEOLOGICAL SURVEY

DUNCAN PEAK QUADRANGLE
CALIFORNIA—PLACER CO.
7.5 MINUTE SERIES (TOPOGRAPHIC)
NE 1/4 DUNCAN PEAK 15' QUADRANGLE



Mapped, edited, and published by the Geological Survey

Control by USGS and USC&GS

Topography from aerial photographs by multiplex methods

Aerial photographs taken 1948. Field check 1952

Polyconic projection. 1927 North American datum

10,000-foot grid based on California coordinate system, zone 2

Dashed land lines indicate approximate locations

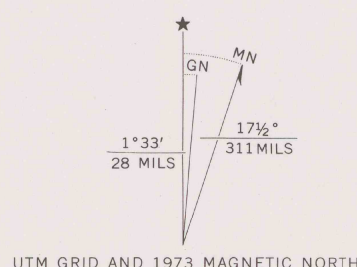
Unchecked elevations are shown in brown

1000-meter Universal Transverse Mercator grid ticks,

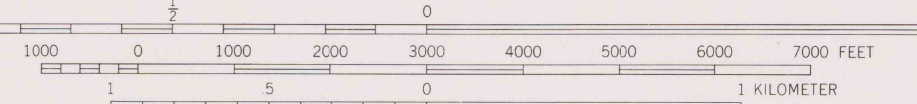
zone 10, shown in blue

Revisions shown in purple compiled from aerial photographs

taken 1973. This information not field checked



SCALE 1:24,000



CONTOUR INTERVAL 40 FEET
NATIONAL GEODETIC VERTICAL DATUM OF 1929

THIS MAP COMPLIES WITH NATIONAL MAP ACCURACY STANDARDS
FOR SALE BY U.S. GEOLOGICAL SURVEY, DENVER, COLORADO 80225, OR RESTON, VIRGINIA 22092
A FOLDER DESCRIBING TOPOGRAPHIC MAPS AND SYMBOLS IS AVAILABLE ON REQUEST

ROAD CLASSIFICATION

Light-duty ————— Unimproved dirt —————

REFERENCE

DUNCAN PEAK, CALIF 3700m
NE 1/4 DUNCAN PEAK 15' QUADRANGLE
N3845—W12030/7.5

1952
PHOTOREVISED 1973
AMS 1862 II NE—SERIES V865

DO NOT CIRCULATE

ed. 1973
rep. 1976 PP