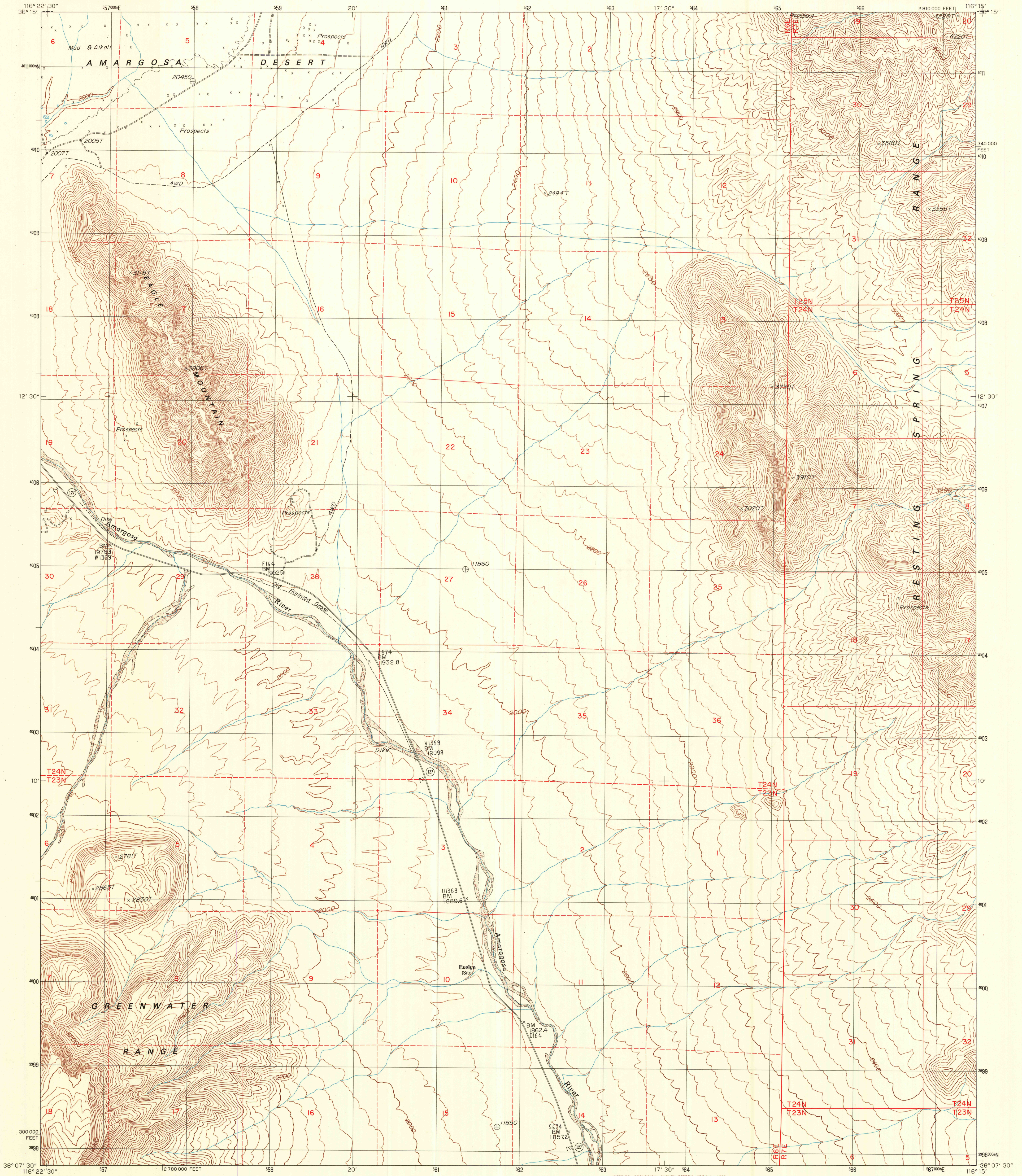


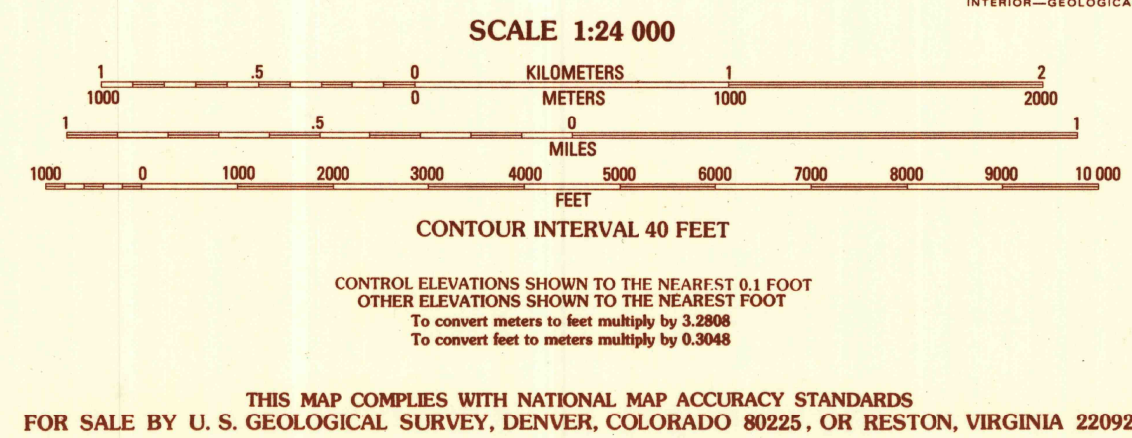
UNITED STATES
DEPARTMENT OF THE INTERIOR
GEOLOGICAL SURVEY

EAGLE MTN. QUADRANGLE
CALIFORNIA—INYO CO.
7.5 MINUTE SERIES (TOPOGRAPHIC)



PRODUCED BY THE UNITED STATES GEOLOGICAL SURVEY
CONTROL BY USGS, NOS/NOAA
COMPILED FROM AERIAL PHOTOGRAPHS TAKEN 1983
FIELD CHECKED 1983, MAP EDITED 1988
PROJECTION LAMBERT CONFORMAL CONIC
GRID: 1000-METER UNIVERSAL TRANSVERSE MERCATOR, ZONE 11
10,000-FOOT STATE GRID TICKS, CALIFORNIA, ZONE 4
UTM GRID DECLINATION 0°24' EAST
1980 MAGNETIC NORTH DECLINATION 14°30' EAST
VERTICAL DATUM NATIONAL GEODETIC VERTICAL DATUM OF 1929
HORIZONTAL DATUM 1927 NORTH AMERICAN DATUM
To place on the predicted North American Datum of 1983,
move the projection lines as shown by dashed corner ticks
(.6 meters north, .78 meters east.)
There may be private inholdings within the boundaries of any
Federal and State Reservations shown on this map

PROVISIONAL MAP
Produced from original
manuscript drawings. Infor-
mation shown as of date of
photography.



QUADRANGLE LOCATION

1	2	3	1 Death Valley Jct.
4	5	2 Bole Spring	
6	7	3 High Peak	
		4 West of Eagle Mtn.	
		5 Stewart Valley	
		6 Deadman Pass	
		7 East of Deadman	
		8 Twelvemile Spring	

ADJOINING 7.5' QUADRANGLE NAMES

ROAD LEGEND
Improved Road.....
Unimproved Road.....
Trail.....
Interstate Route.....
U.S. Route.....
State Route.....

EAGLE MTN., CALIF.
PROVISIONAL EDITION 1988
36116-B3-TF-024