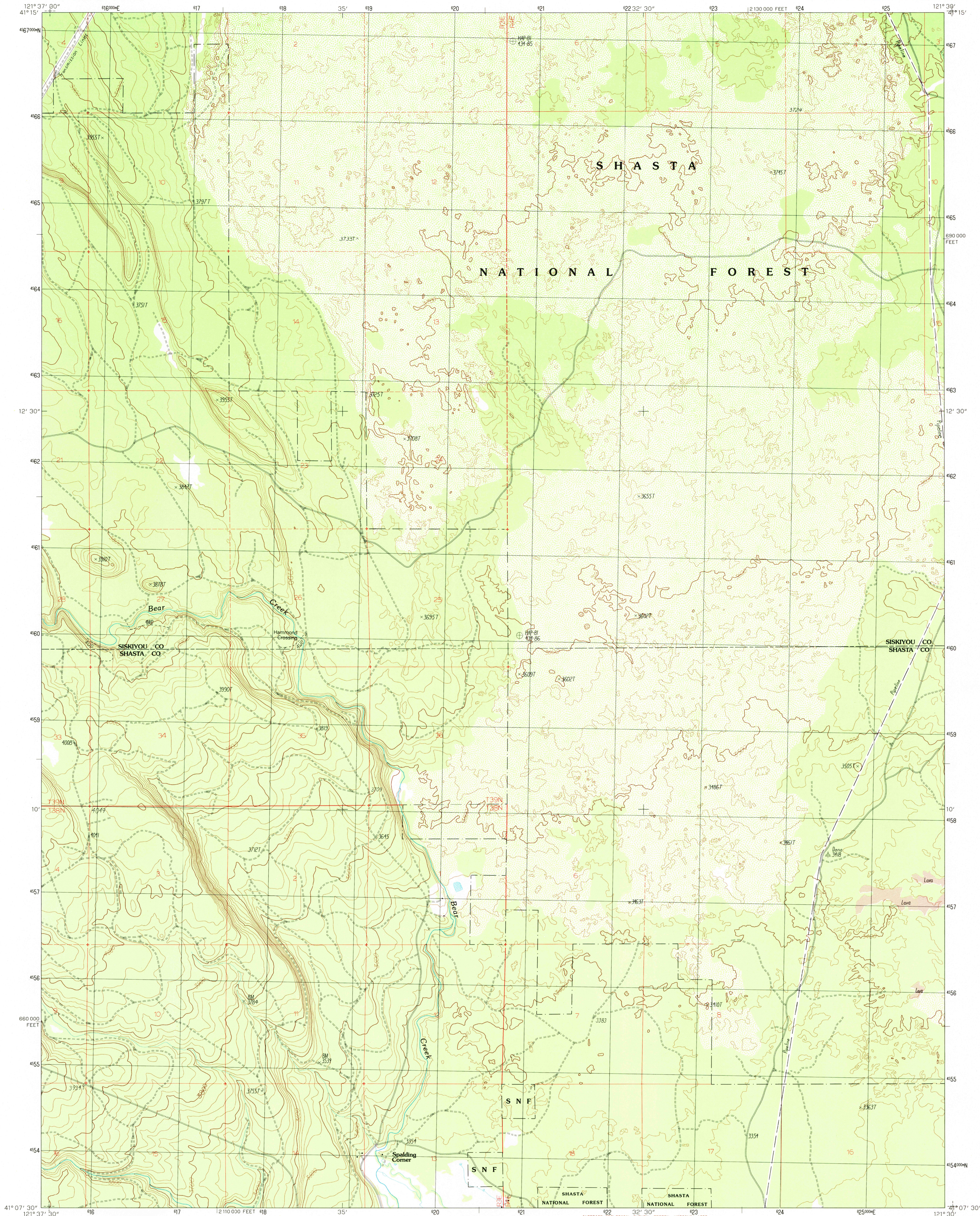


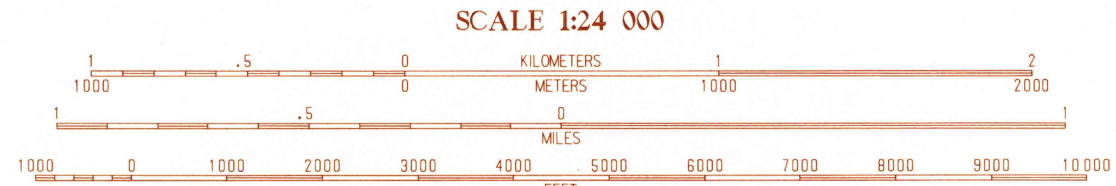
UNITED STATES  
DEPARTMENT OF THE INTERIOR  
GEOLOGICAL SURVEY

EAST OF PONDOSA QUADRANGLE  
CALIFORNIA  
7.5 MINUTE SERIES (TOPOGRAPHIC)



PRODUCED BY THE UNITED STATES GEOLOGICAL SURVEY  
CONTROL BY THE UNITED STATES GEOLOGICAL SURVEY  
COMPILED FROM AERIAL PHOTOGRAPHS TAKEN . . . . . 1960  
FIELD CHECKED . . . . . 1960  
LIMITED REVISION FROM AERIAL PHOTOGRAPHS TAKEN . . . . . 1985  
FIELD CHECKED . . . . . 1986  
MAP EDITED . . . . . 1986  
PROJECTION . . . . . LAMBERT CONFORMAL CONIC  
GRID 100-METER UNIVERSAL TRANSVERSE MERCATOR . . . . . ZONE 10  
1000-FOOT STATE GRID TICKS . . . . . CALIFORNIA, ZONE 1  
UTM GRID DECLINATION . . . . . 0°57' EAST  
1980 MAGNETIC NORTH DECLINATION . . . . . 17° EAST  
VERTICAL DATUM . . . . . NATIONAL GEODETIC VERTICAL DATUM OF 1929  
HORIZONTAL DATUM . . . . . 1927 NORTH AMERICAN DATUM  
To place on the predicted North American Datum of 1983,  
move the projection lines as shown by dashed corner ticks  
(18 meters north and 91 meters east)  
There may be private inholdings within the boundaries of any  
Federal and State Reservations shown on this map  
No distinction made between houses, barns, and other buildings  
Where omitted, land lines have not been established  
Public Land Survey System is shown as published in 1961 and

PROVISIONAL MAP  
Produced from original  
manuscript drawings. Infor-  
mation shown as of date of  
field check.



CONTOUR INTERVAL 20 FEET  
To convert feet to meters multiply by .3048  
To convert meters to feet multiply by 3.2808

THIS MAP COMPLIES WITH NATIONAL MAP ACCURACY STANDARDS  
FOR SALE BY U.S. GEOLOGICAL SURVEY, DENVER, COLORADO 80225  
OR RESTON, VIRGINIA 22092

QUADRANGLE LOCATION

1	2	3
4	5	6
7	8	

ADJOINING 7.5' QUADRANGLE NAMES

1 Hambone  
2 Indian Spring Mountain  
3 White Horse  
4 Pondosa  
5 Timbered Crater  
6 Burney Falls  
7 Dana  
8 Fall River Mills

ROAD LEGEND  
Improved Road . . . . .  
Unimproved Road . . . . .  
Trail . . . . .  
Interstate Route U.S. Route State Route  
EAST OF PONDOSA, CALIFORNIA  
PROVISIONAL EDITION 1990  
41121-B5-TF-024

APR 17 1991  
RECEIVED  
U.S. GEOLOGICAL SURVEY  
RESTON, VIRGINIA 22092