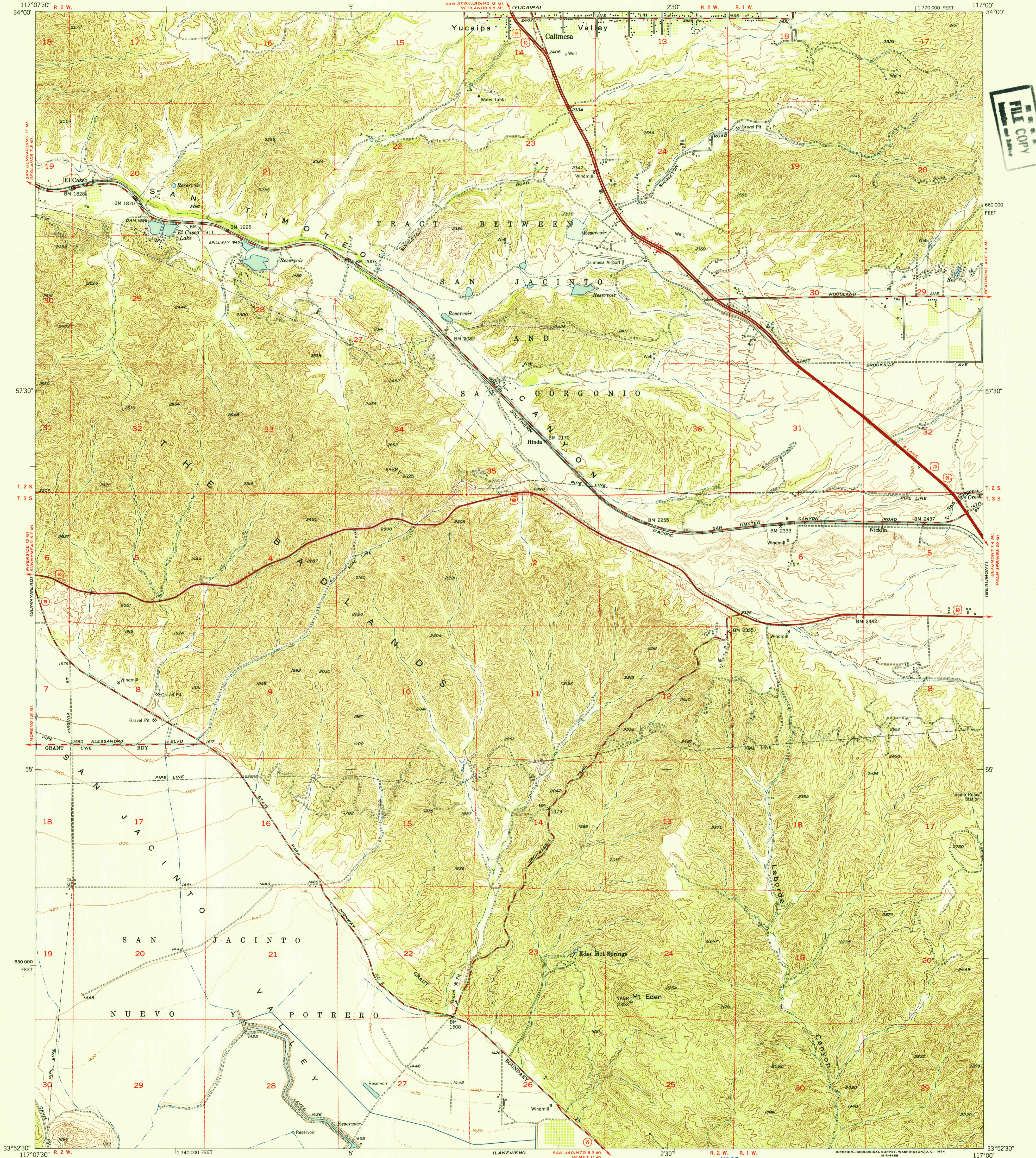
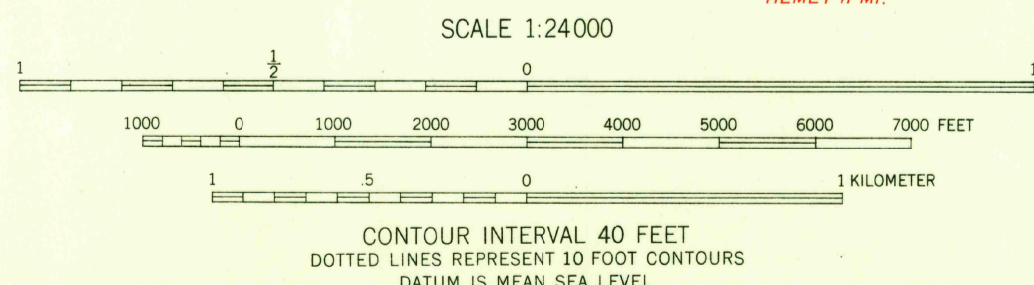
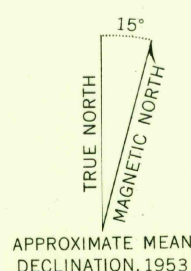


UNITED STATES
DEPARTMENT OF THE INTERIOR
GEOLOGICAL SURVEY

EL CASCO QUADRANGLE
CALIFORNIA-RIVERSIDE CO.
7.5 MINUTE SERIES (TOPOGRAPHIC)
NE/4 PERRIS 15' QUADRANGLE



Mapped, edited, and published by the Geological Survey
Control by USGS, USC&GS, and USCE
Topography from aerial photographs by multiplex methods
and by plane-table surveys 1953. Aerial photographs taken 1951
Polyconic projection. 1927 North American datum
10,000-foot grid based on California coordinate system, zone 6
Dashed land lines indicate approximate locations



THIS MAP COMPLIES WITH NATIONAL MAP ACCURACY STANDARDS
FOR SALE BY U. S. GEOLOGICAL SURVEY, FEDERAL CENTER, DENVER, COLORADO OR WASHINGTON 25, D. C.
A FOLDER DESCRIBING TOPOGRAPHIC MAPS AND SYMBOLS IS AVAILABLE ON REQUEST

USGS
Historical File
Topographic Division



ROAD CLASSIFICATION
Heavy-duty 4 LANE 16 LANE Light-duty 4 LANE 16 LANE
Medium-duty 4 LANE 16 LANE Unimproved dirt 4 LANE 16 LANE
U. S. Route State Route



EL CASCO, CALIF.
NE/4 PERRIS 15' QUADRANGLE
N3352.5-W11700.7.5

1953 AUG 2 6 1954