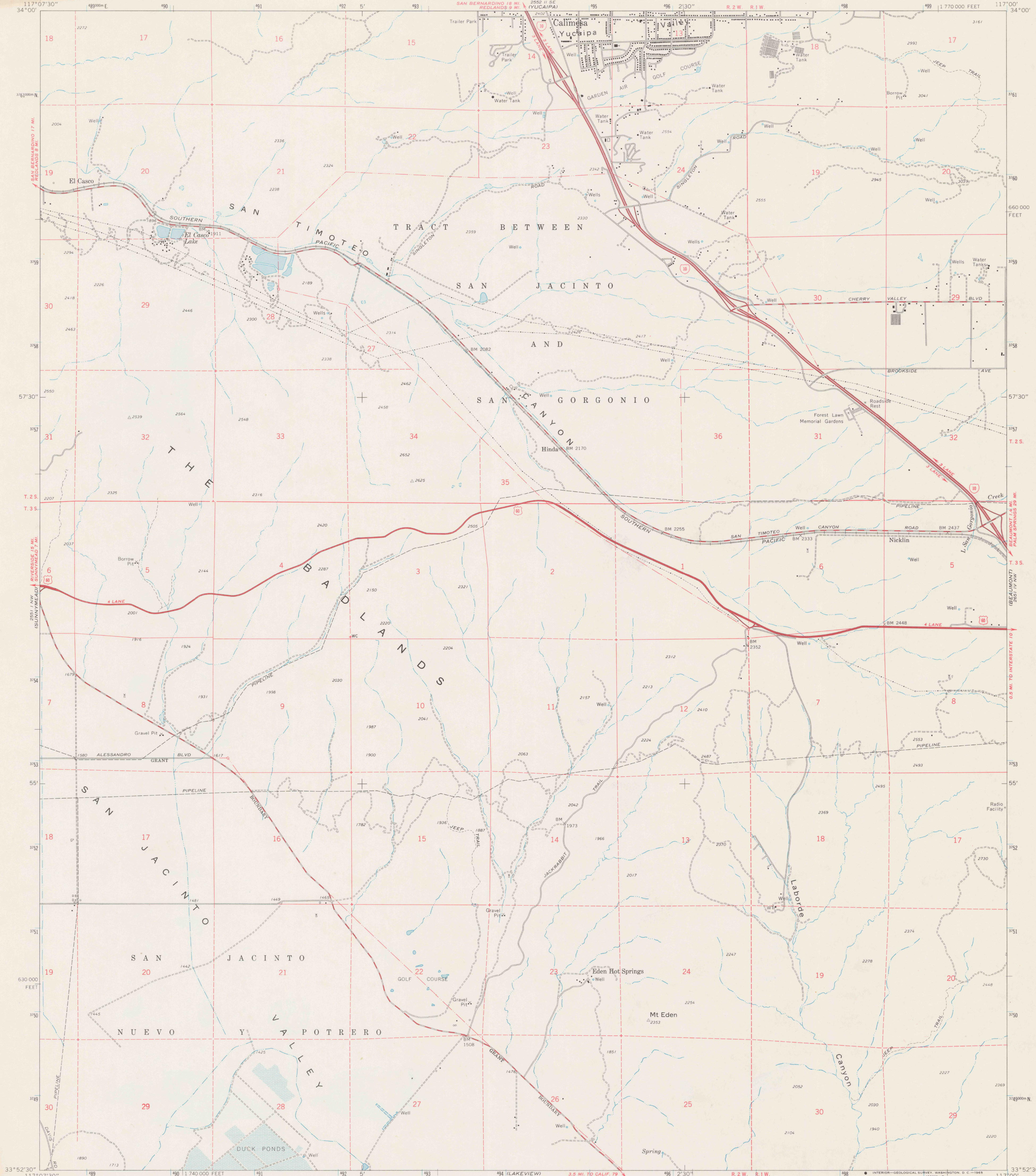


2551 1 NW  
REDLANDS 9 MI.  
117°07'30"  
34°00'

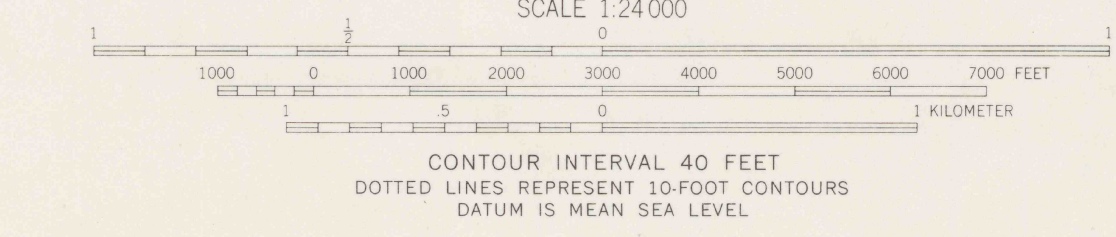
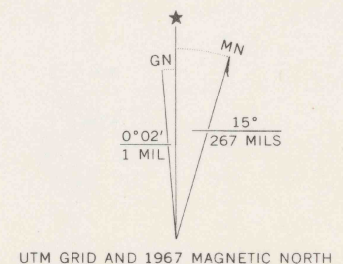
UNITED STATES  
DEPARTMENT OF THE INTERIOR  
GEOLOGICAL SURVEY

EL CASCO QUADRANGLE  
CALIFORNIA—RIVERSIDE CO.  
7.5 MINUTE SERIES (TOPOGRAPHIC)  
NE/4 PERRIS 15' QUADRANGLE

2551 1 NW  
REDLANDS 9 MI.  
117°07'30"  
34°00'



Mapped, edited, and published by the Geological Survey  
Revised in cooperation with California Department of  
Water Resources  
Control by USGS, USC&GS, and USCE  
Topography by photogrammetric methods from aerial photographs  
taken 1951 and planimetric surveys 1953. Revised from aerial  
photographs taken 1966. Field checked 1967  
Polyconic projection. 1927 North American datum  
10,000-foot grid based on California coordinate system, zone 6  
1000-meter Universal Transverse Mercator grid ticks,  
zone 11, shown in blue  
Areas covered by dashed light-blue pattern  
are subject to controlled inundation



THIS MAP COMPLIES WITH NATIONAL MAP ACCURACY STANDARDS  
FOR SALE BY U.S. GEOLOGICAL SURVEY, DENVER, COLORADO 80225, OR WASHINGTON, D. C. 20242  
A FOLDER DESCRIBING TOPOGRAPHIC MAPS AND SYMBOLS IS AVAILABLE ON REQUEST

ROAD CLASSIFICATION

Heavy-duty	Light-duty
Medium-duty	Unimproved dirt
Interstate Route	U. S. Route

REFERENCE

EL CASCO, CALIF.

NE/4 PERRIS 15' QUADRANGLE  
N3352.5—W11700/7.5

1967

AMS 2551 1 NE—SERIES W985

DO NOT CIRCULATE