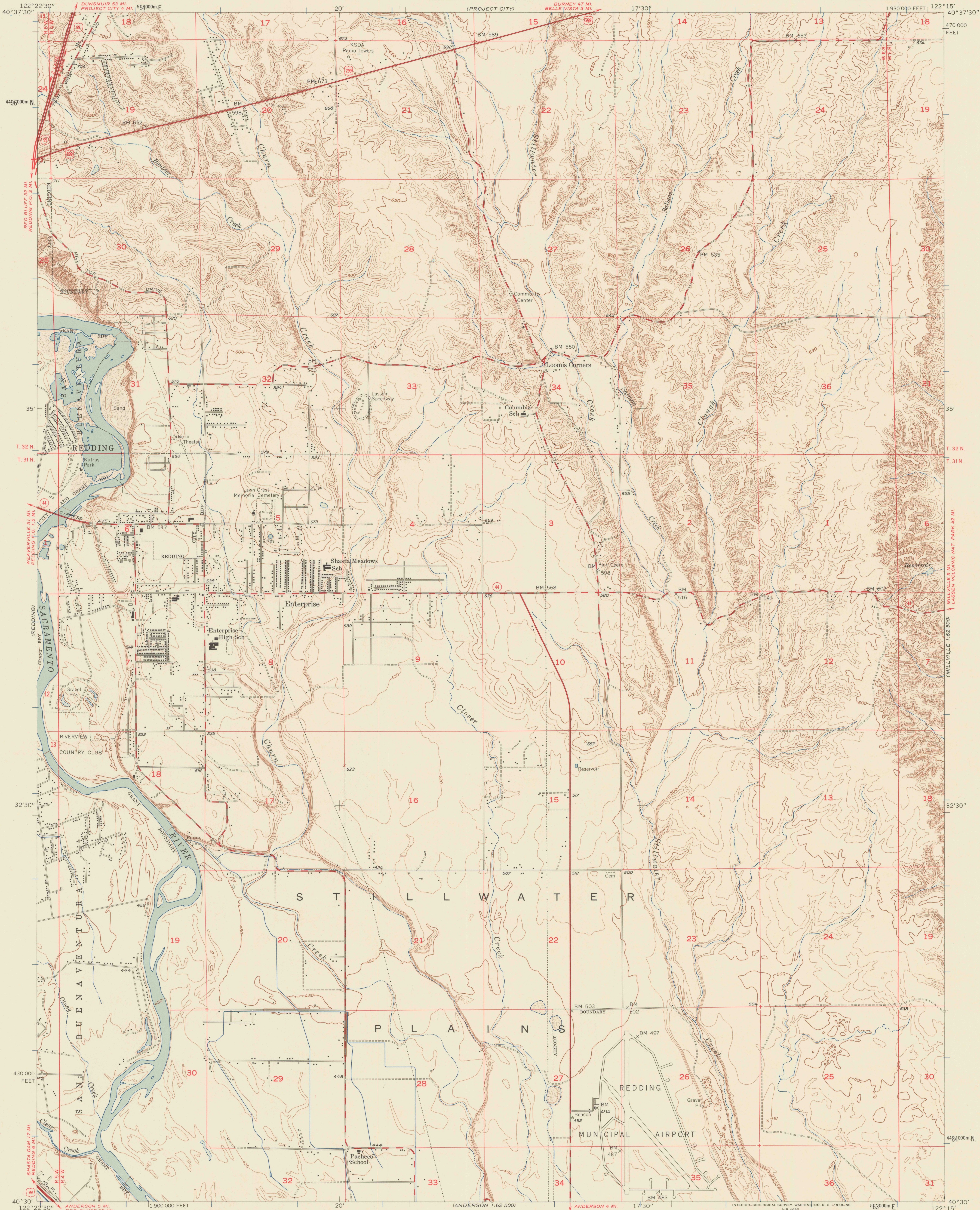


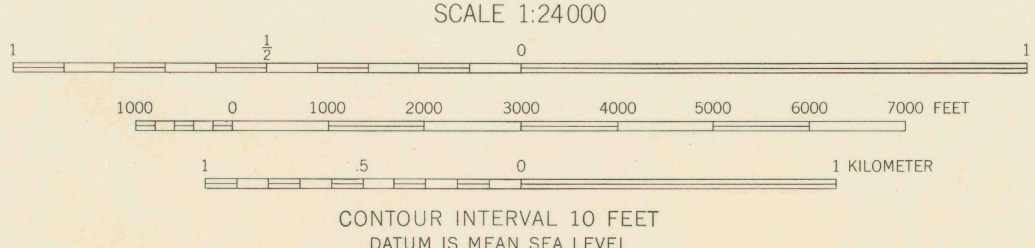
UNITED STATES
DEPARTMENT OF THE INTERIOR
GEOLOGICAL SURVEY

UNITED STATES
DEPARTMENT OF THE INTERIOR
BUREAU OF RECLAMATION

ENTERPRISE QUADRANGLE
CALIFORNIA-SHASTA CO.
7.5 MINUTE SERIES (TOPOGRAPHIC)
SE 1/4 REDDING 15' QUADRANGLE



Mapped, edited, and published by the Geological Survey
Control by USGS and USC&GS
Topography from aerial photographs by Kelsh plotter
Aerial photographs taken 1955. Field check 1957
Polyconic projection. 1927 North American datum
10,000-foot grid based on California coordinate system,
zone 1
1000-meter Universal Transverse Mercator grid ticks,
zone 10, shown in blue
Unchecked elevations are shown in brown



ROAD CLASSIFICATION
Heavy-duty ——— Light-duty ———
Medium-duty ——— Unimproved dirt ———
U.S. Route ——— State Route ———

ENTERPRISE, CALIF.
SE 1/4 REDDING 15' QUADRANGLE
N4030-W12215/7.5

1957

THIS MAP COMPLIES WITH NATIONAL MAP ACCURACY STANDARDS
FOR SALE BY U.S. GEOLOGICAL SURVEY, DENVER 2, COLORADO OR WASHINGTON 25, D. C.
A FOLDER DESCRIBING TOPOGRAPHIC MAPS AND SYMBOLS IS AVAILABLE ON REQUEST

3700
Var
U5
7.5
ed. 1957
rep. 1958