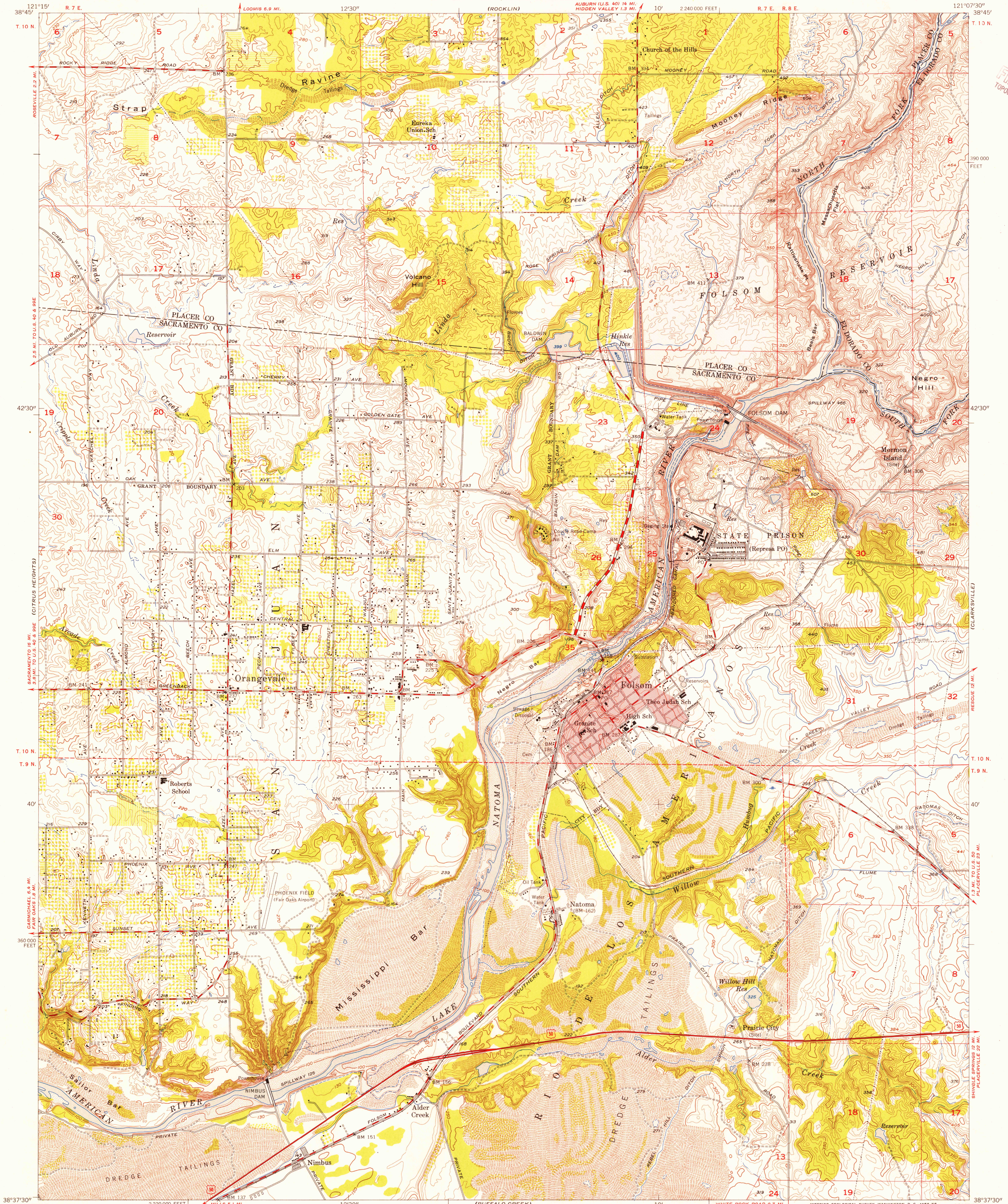


U.S.G.S.
FILE COPY
TOPOGRAPHIC DIVISION



Mapped, edited, and published by the Geological Survey

Control by USGS and USC&GS

Topography from aerial photographs by photogrammetric methods and by planetable surveys 1908

Aerial photographs taken 1952. Field check 1954

Polyconic projection. 1927 North American datum

10,000-foot grid based on California coordinate system, zone 2

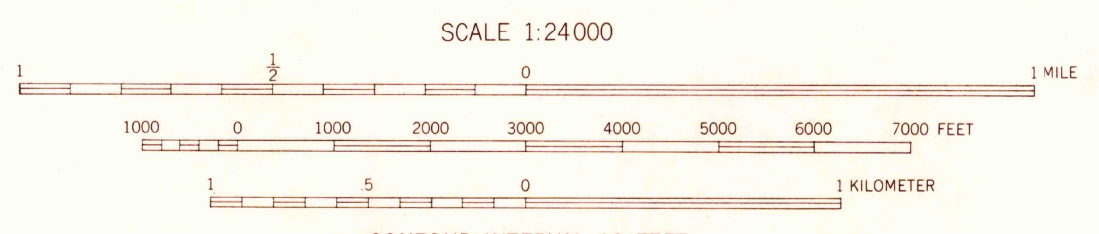
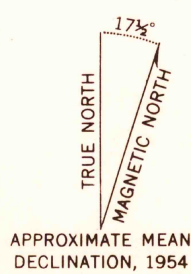
Red tint indicates areas in which only landmark buildings are shown

Dashed land lines indicate approximate locations

Land grant boundaries which follow the banks of the American River are not shown

Blue hatching indicates areas to be submerged by Folsom Dam at spillway elevation of 466 feet and by Nimbus Dam at spillway elevation of 126 feet

Unchecked elevations are shown in brown



THIS MAP COMPLIES WITH NATIONAL MAP ACCURACY STANDARDS
FOR SALE BY U. S. GEOLOGICAL SURVEY, FEDERAL CENTER, DENVER, COLORADO OR WASHINGTON 25, D. C.
A FOLDER DESCRIBING TOPOGRAPHIC MAPS AND SYMBOLS IS AVAILABLE ON REQUEST

USGS
Historical File
Topographic Division



ROAD CLASSIFICATION
Heavy-duty ——— Light-duty ———
Medium-duty ——— Unimproved dirt ———
U. S. Route ——— State Route ———

FOLSOM, CALIF.
NW 1/4 FOLSOM 15' QUADRANGLE
N 3837.5—W 12107.5/7.5

U.S.G.S.
FILE COPY
TOPOGRAPHIC DIVISION

1954

NOV 21 1955

4735