

(LAS PLUMAS)

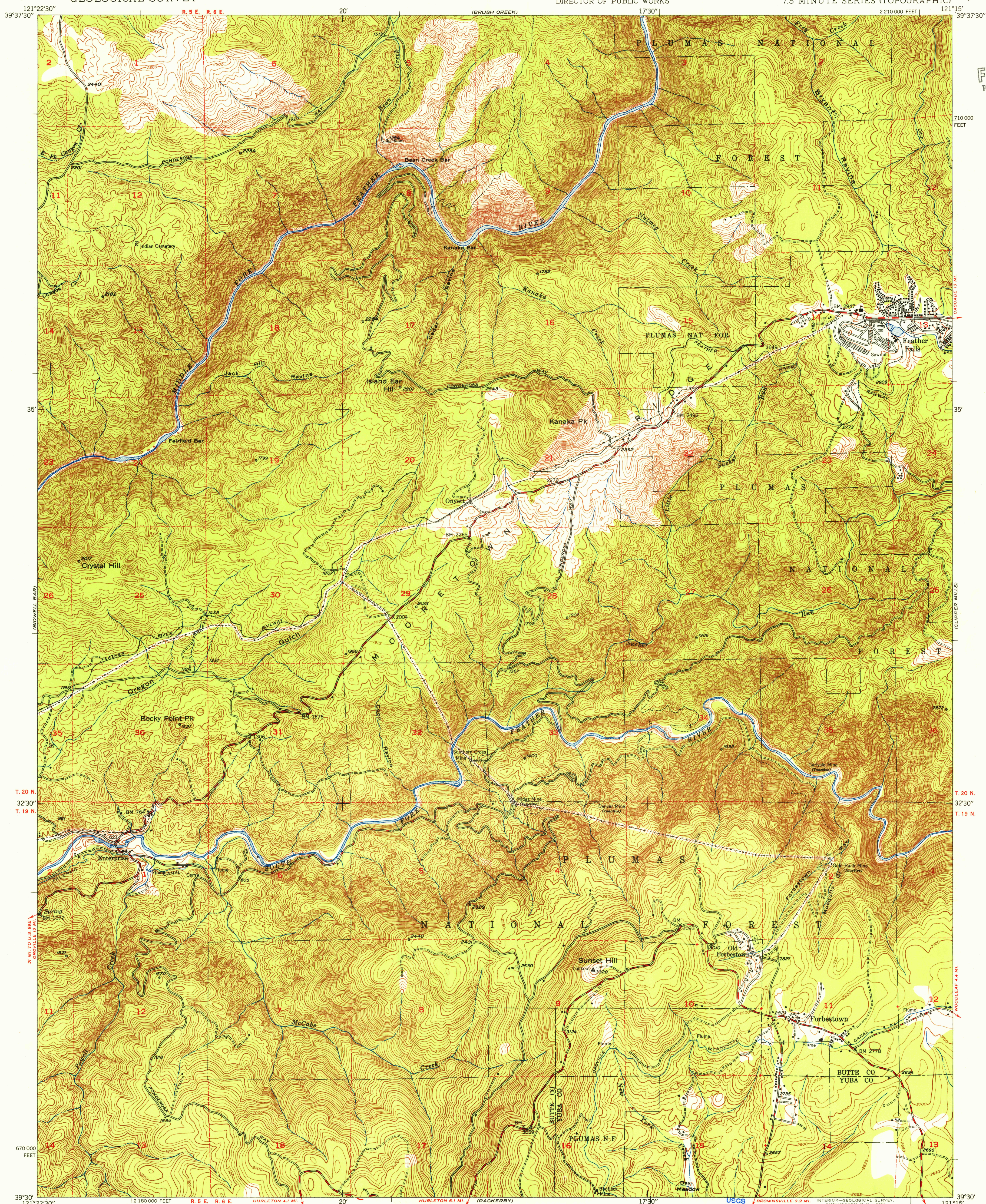
UNITED STATES
DEPARTMENT OF THE INTERIOR
GEOLOGICAL SURVEY

BUREAU OF RECLAMATION

STATE OF CALIFORNIA
DIRECTOR OF PUBLIC WORKS

FORBESTOWN QUADRANGLE
CALIFORNIA
7.5 MINUTE SERIES (TOPOGRAPHIC)

(CASCADIA)



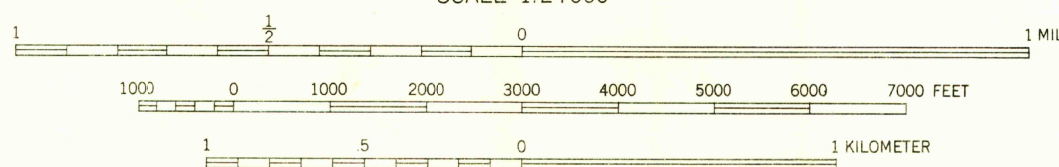
U.S.G.S.
FILE COPY
TOPOGRAPHIC DIVISION

T. 20 N.
32°30'
T. 19 N.

T. 20 N.
32°30'
T. 19 N.

Mapped by Fairchild Aerial Surveys, Inc.
Field inspected, edited, and published by the Geological Survey
Control by Fairchild Aerial Surveys, Inc.,
USGS, and USC&GS
Topography from aerial photographs by stereoplano-graph methods
Aerial photographs taken 1946-1947. Field Check 1948
Polyconic projection. 1927 North American datum
10,000-foot grid based on California coordinate system,
zone 2
Dashed land lines indicate approximate location
Fairchild triangulation shown by unlabeled located object symbol

18°
TRUE NORTH
MAGNETIC NORTH
APPROXIMATE MEAN
DECLINATION, 1948



CONTOUR INTERVAL 25 FEET
DATUM IS MEAN SEA LEVEL

FOR SALE BY U. S. GEOLOGICAL SURVEY, FEDERAL CENTER, DENVER, COLORADO OR WASHINGTON 25, D. C.
A FOLDER DESCRIBING TOPOGRAPHIC MAPS AND SYMBOLS IS AVAILABLE ON REQUEST

USGS
Historical File
Topographic Division

ROAD CLASSIFICATION
HARD-SURFACE ALL WEATHER ROADS DRY WEATHER ROADS
Heavy-duty 4 LANE 16 LANE Improved dirt
Medium-duty 4 LANE 16 LANE Unimproved dirt
Loose-surface, graded, or narrow hard-surface
U. S. Route State Route

FORBESTOWN, CALIF.
N3930-W12115/7.5
1948

U.S.G.S.
FILE COPY
TOPOGRAPHIC DIVISION

5340